

High rib pierced fixed profile with excellent spanning capabilities. Best under foot traffic loads

[View miproducts listing](#)



Level of assurance needed to demonstrate NZ Building Code Compliance

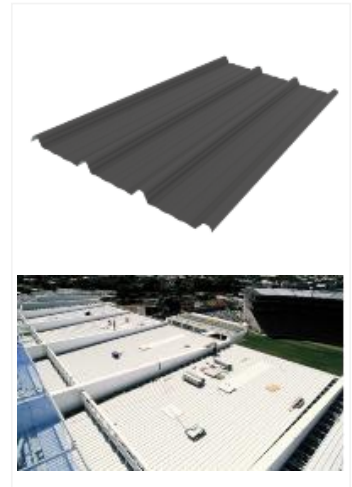
Supporting documentation should include technical information by manufacturer and either an independent assessment or reference to an industry-based scheme



Dimond confirms that this minimum level of assurance has been met or exceeded by the following:

NZ Metal Roofing Manufacturers assoc inc (NZMRM)

[Code of Practice](#)



Technical Statement

Product Description

Brownbuilt 900 has been designed with strong ribs that resist buckling under concentrated loads reducing the chance of damage on roofs where foot traffic is common.

Scope of use

Long run metal roofing and cladding Intended for use as a roofing or wall cladding on commercial buildings envelope provided when used as roofing, the roof pitch is equal to or greater than 3 degrees.

On Roof Internal purlin spaces up to 2.4m for 0.4mm thick steel and up 4m for 0.55mm steel to resist foot traffic and resist wind uplift loads.

On walls no limitations provided the girt spacing will resist the wind suction pressures

An allowance for Thermal expansion must be made for sheet lengths over 20m.

New Zealand Building Code (NZBC)

The product will, if employed in accordance with the supplier's installation and maintenance requirements, assist with meeting the following provisions of the building code:

- **Clause B2 Durability:** Performance B2.3.1
- **Clause E2 External moisture:** Performance E2.3.1, E2.3.2
- **Clause F2 Hazardous building materials:** Performance F2.3.1

Notes

Evidence

The product meets the requirements set out in the following documents, or relevant parts of cited standards within the documents:

- NZ Metal Roofing Manufacturers Code of Practice

Test information available from Pacific Coilcoaters and BHP NZ Steel, and past history of use of long run metal roofing and cladding products in New Zealand indicate that, provided the product use and maintenance is in line with the guidelines contained in the current literature referenced, Dimond long run metal roofing & wall cladding systems can be expected to meet the performance criteria in clause B2 and E2 of the New Zealand Building Code, for a period of not less than 15 years.

Supporting Evidence

The product has and can make available the following additional evidence to support the above statements:



NZ Metal Roofing Manufacturers assoc inc (NZMRM)

[Code of Practice](#)

Product Criteria

Design requirements

Manufactured using different paint coatings available from NZS or PCC depending on the durability required for the environment the roof or wall will be installed in, in accordance with AS/NZS 2728. As a guide sites within 100m of breaking surf CS Maxx can be used, then at 100 m (Category 4) ColorCote MagnaFlow(ZM8) or CS Endura can be used, beyond 200m (Category 3) then CC ZinaCore(ZR8), and beyond can use Zinalume. Refer to environmental literature available from PCC or NZS or contact Dimond on 0800 766 377.

masterspec partner

Company Contact Details



Company: Dimond
Physical Address: 575 Great South Road
Penrose
AUCKLAND
Postal Address: Private Bag 92803
Penrose
AUCKLAND
Email: roofspec@dimond.co.nz
Website: <http://www.dimond.co.nz/>

DP955 is best suited for commercial roofs and wall cladding installed on larger purlin spans where the roof is subjected to foot traffic loads where rib damage can not be tolerated. Typical limits on purlin spans under restricted foot traffic loads for 0.4mm are 2.4m internal 1.6m ends. and 0.55mm are 4.0m internal and 2.7m ends. For more information refer to www.dimond.co.nz.

Installation requirements

Not available in Aluminium.

Refer to Dimond website for installation requirements.

Maintenance requirements

Must be regularly washed especially in areas not natural rain washed.

Regular washing could be up to every 3 months, with a soft bristled brush and plenty of fresh water, or a medium waterblasting.

Refer to the Dimond website for full maintenance statement.

Warrantees

Material warranty is dependant on the correct coating being used for the environment,. Refer coil coaters website. www.colorcote.co.nz

Commercial roofs and wall cladding: 15 Years, covering paint and sheet perforation.

Residential roofs:

For flaking, peeling and excessive fade: In ISO cat 3 up to 20 years,

ISO cat 4: 15 years

Sheet perforation: In ISO Cat 3; 30 years. ISO Cat 4; 20 years

Company Product Information

Environmental

Not harmful to the environment and can be recycled as scrap steel.

Relationships



Member of New Zealand Green Building Council



New Zealand Made



Date last validated: **31 January 2019**



Date last updated: **31 January 2019**

Disclaimer: The Product Technical Statement (PTS) template is copyright to Construction Information Limited. However the content of this PTS is the responsibility of the product manufacturer/supplier. Refer to the miproducts Terms and Conditions