

Nuralite Waterproofing Nuraply 3PT/3PTM Membrane

Product Technical Statement: 106534



Waterproofing tanking membrane system

[View miproducts listing](#)



Level of assurance needed to demonstrate NZ Building Code Compliance

Supporting documentation should include technical information by manufacturer and either a BRANZ or independent Appraisal or CodeMark



Nuralite Waterproofing confirms that this minimum level of assurance has been met or exceeded by the following:

CodeMark

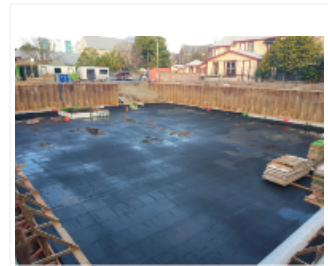
[CM70033](#)

BRANZ Appraisal

[547 \(2019\)](#)

.

-



Technical Statement

Product Description

APP modified bitumen sheet single-layer waterproofing, cold-adhesive glued, with heat-welded lap joints, and a prefinished mineral chip upper surface

Scope of use

Nuraply 3PT/3PTM is suitable for new and existing commercial and residential buildings where water is likely.

It can be applied over foundations, basements, lift shafts and under slab.

New Zealand Building Code (NZBC)

The product will, if employed in accordance with the supplier's installation and maintenance requirements, assist with meeting the following provisions of the building code:

- **Clause B1 Structure:** Performance B1.3.2, B1.3.3(b), B1.3.3(e)
- **Clause E2 External moisture:** Performance E2.3.1, E2.3.2, E2.3.3, E2.3.7
- **Clause F2 Hazardous building materials:** Performance F2.3.1

Supporting Evidence

The product has and can make available the following additional evidence to support the above statements:



CodeMark

[CM70033](#)



BRANZ Appraisal

[547 \(2019\)](#)

.

-

Use in Service History

Evidence of in service history:

- Westgate Multi Purpose Facility.
- Lopdell House/Te Uru Waitakere Contemporary Gallery Auckland New Zealand: A restoration project Nuraply 3PT tanking installed to encase walls and floors to provide waterproofing.
- Rippon Vineyard, Wanaka
- Rotorua Hospital, Rotorua

Product Criteria

Design requirements

- Drains or channels must be included within the design to lead away water.
- Slope the surrounding area away from the wall with a minimum 1:30 slope.
- In respect to an underslab, compacted hardfill up to 600mm in depth needs to be installed, complying with the requirements of NZS 3604-2011.
- For more design features refer to: https://www.nuralite.co.nz/static-files/417/application%2Fpdf/Nuraply_3PT_3PTM_Product_Brochure.pdf

Installation requirements

- The Nuraply 3PT /3PTM must be placed on a surface that is clean and dry, with no lumps, hollow and holes.
- The concrete must have cured for at least 28 days before.
- Must be installed by Nuralite approved installers.
- For full checklist see: http://www.nuralite.co.nz/Products/Nuraply_3PT_3PTM/downloads/Nuraply_3PT_3PTM_Installation_Checksheet.pdf

Maintenance requirements

masterspec partner

Company Contact Details



| | |
|-------------------|--|
| Company: | Nuralite Waterproofing Ltd |
| Physical Address: | Leon Leicester Ave Mt Wellington AUCKLAND |
| Postal Address: | Leon Leicester Ave Mt Wellington AUCKLAND |
| Telephone: | 64 09 5792046 |
| Fax: | 64 09 5795136 |
| Email: | info@nuralite.co.nz |
| Website: | www.nuralite.co.nz |

Nuralite Waterproofing Nuraply 3PT/3PTM Membrane

Product Technical Statement: 106534



The Nuraply 3PT/3PTM system does not require maintenance but Nuralite recommends that a visual check of the membrane be undertaken when the opportunity arises.

Warrantees

20-Year Product Warranty.

Company Product Information

Relationships



Member of New Zealand Green Building Council



Toitu Carbon Zero Certification 2020007J



Date last validated: **06 May 2022**



Date last updated: **06 May 2022**

Disclaimer: The Product Technical Statement (PTS) template is copyright to Construction Information Limited. However the content of this PTS is the responsibility of the product manufacturer/supplier. Refer to the miproducts Terms and Conditions