



# SOLATUBE®

Innovation in Daylighting™



**Bring light into your...**

Hallway	2
---------	---

Bathroom	4
----------	---

Bedroom	6
---------	---

Living Room	8
-------------	---

Kitchen	10
---------	----

**And more!**



**hometech™**  
Better spaces. Better lives.

Daylight is captured by the dome and directed down into the tube.

1

2

Daylight is directed downward through the roof cavity.

3

Daylight is distributed throughout the room.

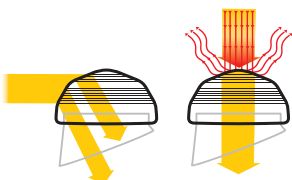
4

# What is a Solatube Daylighting System?

1

## Raybender® 3000 Technology

- Patented daylight-capturing dome lens
- Redirects low-angle sunlight
- Rejects overpowering summer midday sunlight
- Consistent daylighting throughout the day



2

## LightTracker™ Reflector

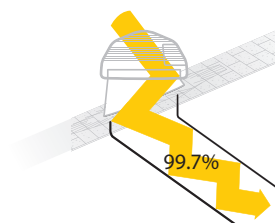
- Patented in-dome reflector faces north
- Redirects low-angle winter sunlight
- Increases light input for increased light output
- Unsurpassed year-round performance



3

## Spectralight® Infinity

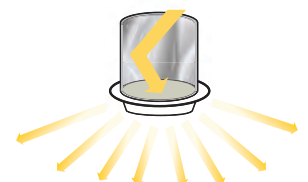
- World's most reflective tubing
- 99.7% spectral reflectivity
- Purest colour rendition possible
- Can transfer sunlight a phenomenal 15m



4

## Dual Lens Double Glazing

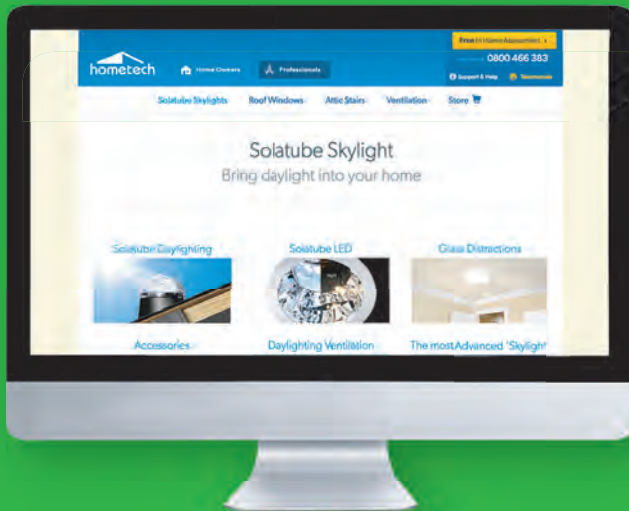
- Insert the Effects lens to provide insulation properties similar to double glazing
- Please see page 15 for more details





# The Solatube Daylighting Process

At Hometech Solatube we value our customers and their time. That's why we ensure the process is as seamless as possible. In just three easy steps any room in your home can be streaming with an abundance of pure, clear, natural light.



## Step 1

Simply call **0800 HOMETECH** (466 383) or visit **[www.hometech.co.nz](http://www.hometech.co.nz)** to book your no obligation free quote. Our friendly staff are always happy to answer any queries you may have.



## Step 2

Your local Certified Licensed Installer will visit your home at your convenience, conduct a roof cavity inspection and provide an assessment. Ask about same day installation!



## Step 3

Our Certified Team will install your Solatube Daylighting System in just a few hours. Highest standards are always maintained and comes with a 10 year warranty on the product and certified installation.

Check out **[www.hometech.co.nz/testimonials](http://www.hometech.co.nz/testimonials)** for our rave reviews!

Before

After



***"It has made an incredible difference to the light in the hallway. Far exceeded our expectations. Thanks Tim!"***

– Annette Jones



# Hallway

## Transform busy spaces

Hallways and passageways are often overlooked when it comes to lighting. Although they are heavy traffic areas, they remain missed opportunities for showcasing artwork, pictures and family photos often displayed in hallways. Solatube Daylighting Systems bring natural daylight into your home, creating an inviting entry point and a welcoming atmosphere as soon as you step through the door.

---

### Benefits

Transforms dark hallways

Makes your home more inviting

Use daylighting to utilise your hallway walls

Showcase family photos and artwork

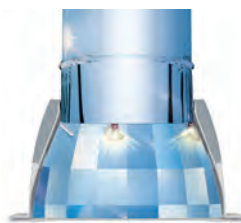
---

### Accessories see page 14 for full range

These provide the convenience of a switched light for night time use



Light Add-on Kit



LED Unit



Solar NightLight

"Installing a Solatube Daylighting System transforms any hallway and often I end up installing more than one. The size of the Solatube will depend on various things and we are happy to provide our experienced recommendation at a time convenient to you."

- Tim Rooney

0800 HOMETECH (466 383)






Before



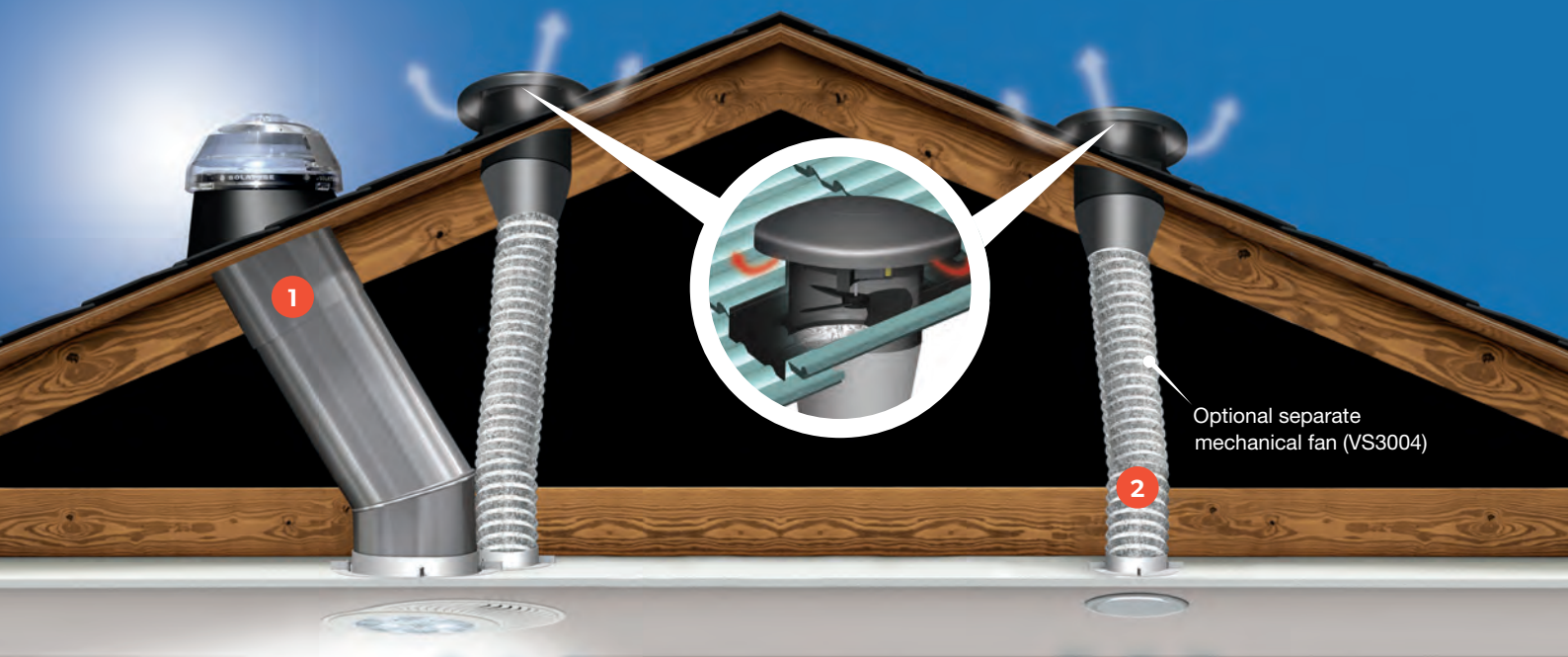
After



***"We have light streaming into our bathroom now.  
Thank you. We love it so much!"***

– Hoani Smith





# Bathrooms

## Shower yourself with natural daylight

Bathrooms are one of the most utilised rooms in the home. This is where you shower, shave and apply make-up so it is important you can see the best rendition of yourself with pure, natural daylight.

### Benefits

Pure clean daylight perfect for applying make-up

Gives bathroom cleaner airier feel

Option to add Ventilation and Light Add-on Kit

### Accessories see page 14 for full range

Consider separate mechanical ventilation for moisture laden rooms such as bathrooms and laundries.



### Ventilation Add-on Kit

In the diagram above, example **1** shows the Solatube with Mechanical Ventilation, while example **2** shows just the Mechanical Ventilation system.



Add a **Light Add-on Kit** for an inconspicuous all in one fitting.

See our **Glass Distractions Decorative Diffusers** on page 15



"Not only can we brighten your bathroom with natural light, we can ventilate it as well. This can be done by using our integrated Solatube and mechanical ventilation or separate (passive or mechanical) ventilation. We also recommend a delay timer to maximise the efficiency of the extraction ventilation."

– Kerry Clark



Before



After



***"A huge thank you for the Solatube Daylighting System.  
It is just amazing, I keep thinking I have left the light on!!!!"***

***– George & Leone Paterson***



# Bedroom

## Wake up to a bright day!

There is nothing like pure clean daylight streaming into your bedroom to welcome a new day. Let a Solatube Daylighting System awaken your senses and prepare you for a bright day. The clear rays from the sun will allow you to see true colour rendition so you can chose the perfect outfit, read your book without straining your eyes, and enjoy the ambience of your bedroom. Use our Daylight Dimmer to shut out sunlight during daylight savings or for a midday nap.

### Benefits

Pure daylight renders colours in their true state so never mix up your socks again!

Tune into your natural sleeping pattern so you can wake up to the sunrise. Or use Daylight Dimmers (page 14) to control light input

Pure clean rays allow you to read a book or use the computer in the comfort of your bedroom without straining your eyes

### Accessories see page 14 for full range

Consider a **Daylight Dimmer** for when you need to switch off the light.



See our **Glass Distractions Decorative Diffusers** on page 15

## Walk in Wardrobe



### Transfer Zone Superior Colour Rendition

Solatube Daylight Systems are perfect for walk in wardrobes. They provide clear consistent light so you can see true colour rendition. With only 0.03% ultraviolet transmission, you can rest assured there will be no fading of clothing or upholstery.



"The Solatube Daylight Dimmer is perfect for long summer evenings. With the flick of a switch you can eliminate the light."

– Marty Smythe



Before



After



***"Extremely pleased with the product performance.  
It exceeded my expectations; great value for money."***

—Will Shindler



# Living Room

## Brighten special moments

The living room tends to be the entertainment hub of your home where people gather to socialise, watch TV, or entertain friends. A Solatube Daylighting System can enhance this area, brighten those precious moments and bring life to your room. With 99.97% UV omittance there is no need to worry about carpet and upholstery fading. Check out our variety of Glass Distraction Decorative Diffusers to suit the style of your home (page 15).

---

### Benefits

Makes socialising more enjoyable

Can bring light to dark décor and helps balance out interior light and glare

Reduces strain on eyes to make reading easier

Protects upholstery and carpet



---

**Diffusers** see page 15 for full range



### Glass Distraction Decorative Diffusers

Choose from one of our Glass Distraction Decorative Diffusers and pick an option that suits the décor of your home.



**"We usually recommend a larger Solatube Daylighting system for the living room. It is one of the most common rooms we daylight. While enhancing the room, you can trust it won't cause any fading."**

– Gareth Delaney

0800 HOMETECH (466 383)



Before



After



***"Thanks for installing our Solatube yesterday afternoon – it has really lit up the kitchen and we're both constantly looking to turn off the light when we leave the room! Even at 6.15am, it was throwing light in there. Amazing, money well spent."*** – Amy & Graeme Bird



# Kitchen

## The ideal ingredient for a brighter kitchen

The kitchen is the heart of the home. It is a place of creativity, socialising and spending time with family. Solatube Daylighting Systems provide a simple solution to daylighting kitchens. We can enhance the look of any kitchen with our Glass Distraction Decorative Diffusers. Go to page 15 to view our full range and choose the one that will best fit your kitchen.

---

### Benefits

Optimises activities such as cooking, reading and socialising

Rejects midday heat

Natural light lets colours burst forth enhancing food

Perfect for butler pantries

---

**Diffusers** see page 15 for full range



### Glass Distraction Decorative Diffusers

Solatube Daylighting Systems provide a simple solution to daylighting kitchens. Choose one of our Glass Distraction Decorative Diffusers and pick an option that suits the décor of your home.



**"Butler's pantries are typically dark rooms.**

**A Solatube Daylighting System is perfect for enhancing usability of this space."**

- Isaac Ibbotson

0800 HOMETECH (466 383)



# Solatube Daylight with Smart LED

The sun is one of the best sources of lighting. The only downside is that it goes down each night, forcing occupants to turn on electric lights to see after dark. The Solatube Smart LED System solves this problem using SunSense Technology, which blends sunlight with LED lighting to seamlessly illuminate rooms day and night.

## **A** Occupancy Sensor

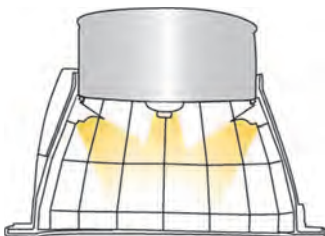
An optional device that:

- Automatically turns LED lights on and off based on room occupancy
- Minimises energy use throughout the day and night
- Maximises the energy efficiency of the Smart LED System

## **B** SunSense Technology

A patented control centre that:

- Continually assesses light levels and determines when supplemental light is needed
- Automatically triggers LEDs to provide optimal light output
- Seamlessly transitions from waning daylight to radiant LED light



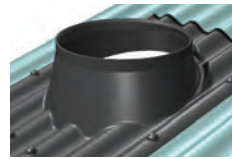


# The Solatube™ Difference



## The Original Solatube

With breakthrough technology, design and materials, the Brighten Up Series Solatube is unlike anything on the market – providing an abundance of pure, clear, natural light for any interior space.



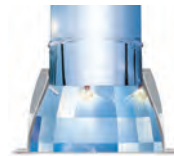
## Unique One Piece Flashing System

Over 30 different cyclone tested roof flashings. Full range to suit all roof types, they are water tight and secure.



## Raybender® 3000 Technology Dome

Capturing more daylight than ever, the patented daylight capturing dome lens redirects low-angle sunlight and rejects overpowering summer midday sunlight for consistent daylighting every day.



## The Solatube Smart LED

Using SunSense technology, the Solatube Smart LED blends sunlight with LED lighting to seamlessly illuminate rooms day and night.



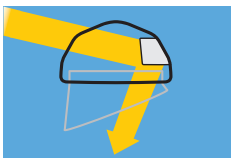
## High Performance Tubing

The Spectralight® Infinity Tubing is the world's most reflective tubing with 99.7% spectral reflectivity. The innovative tubing transfers light a phenomenal 15 metres.



## 10 Year Warranty

All Solatube products installed by a Certified Installer Consultant are backed by a 10 year warranty on product and installation.



## Light Tracker Reflector™

Revolutionising daylighting, the LightTracker™ in-dome reflector redirects low-angle winter sunlight and increases light input for increased light output - creating unsurpassed year-round performance.



## BRANZ Appraised

For peace of mind the system is BRANZ Appraised (No. 665) when installation is carried out by a Certified Installation Consultant for both domestic and commercial applications.



## Dual Lens Double Glazing

The Effects Lens provides insulation properties similar to double glazing.



## Customer Satisfaction

Over 70,000 satisfied customers and 100,000 products installed throughout New Zealand since 1992.



## Glass Distractions

You've never seen the sun like this before with this range of decorative fixtures. It has the vibrancy of daylight and the elegance of glass. See [www.hometech.co.nz](http://www.hometech.co.nz) for more.



## Ventilation Options

These add-on kits with one ceiling fitting are a great way to solve both daylighting and ventilation.



## Daylight Dimmer

Control the amount of light with the convenience of a switch with a variable butterfly baffle. Perfect for bedrooms, media rooms and offices where you need controllability.



## Future Proof Building Partner

HomeTech is part of the Future Proof Building family, helping New Zealanders create a home that is healthy and worth more in the future.



## Code Compliant

All Solatube products are code compliant for New Zealand standards.

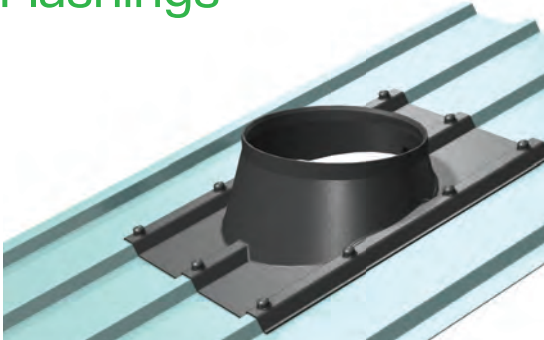


## Nationwide Installation Network

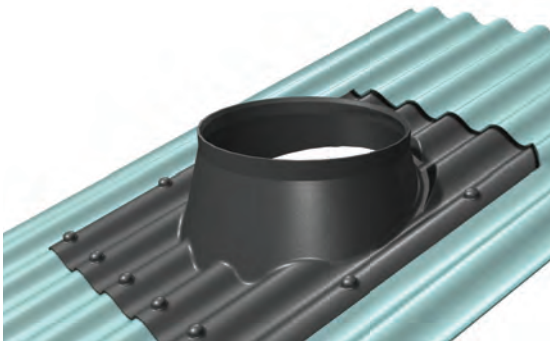
Installed in only a few hours by fully trained licensed installers. Performance guaranteed!

# Accessories

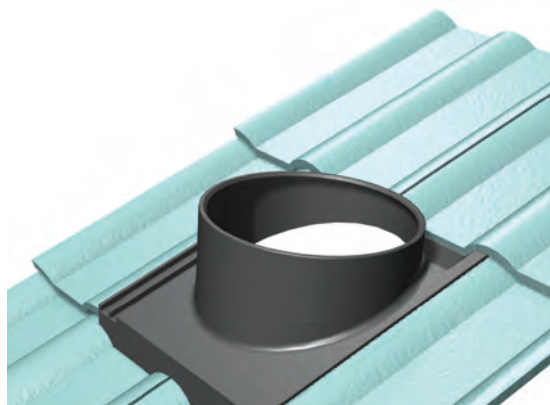
## Flashings



**Trimdek**



**Corrugated**

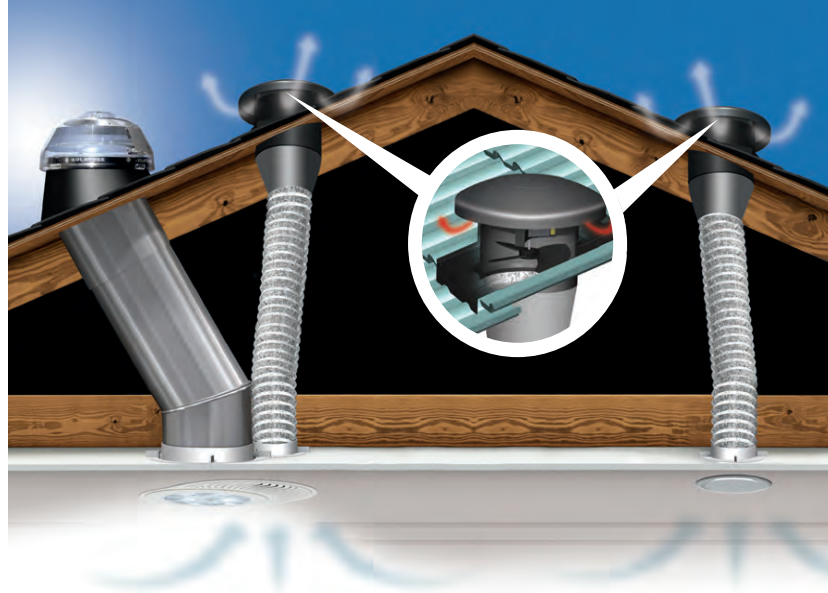


**Concrete Tile**

Flashing kits are available for **most** roof types and pitches. They are fabricated as a single, seamless piece to ensure leak-proof performance.

All Hometech flashings are BRANZ Appraised for performance.

Some angle variation may occur depending on roof pitch.



## Ventilation Add-on Kit

Ideal for bathrooms or laundries, please see pages 4-5 for more information, or visit our website.

## Light Add-on Kit

The Light Add-on Kit provides the convenience of a switched light for night time use.



## Daylight Dimmer\*

Our proprietary variable butterfly baffle easily controls the amount of light entering a room with the convenience of a switch.

- Perfect for bedrooms, media rooms and offices
- Wall mounted switch provides convenient low voltage control

\* Patent 7,082,726

\* Does not completely shut out daylight



## Solar NightLight

Daylight meets nightlight

- Integrated solar panel collects energy, recharging NightLight batteries
- An embedded sensor automatically triggers smart dusk-to-dawn nightlighting
- Two long-lasting LED's emit soft illumination





# GLASSDISTRACTIONS™

## Decorative Fixtures

Solatube™ Glass Distractions Decorative Fixtures enhance the look of any interior with styles that range from practical to elegant to dazzling.



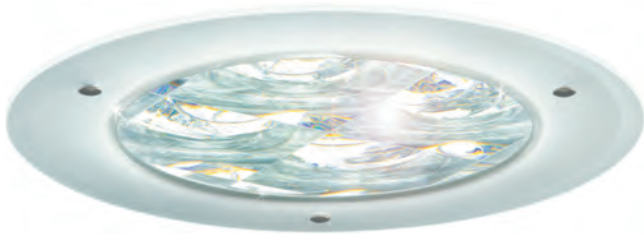
### Tier Drop

The low profile TierDrop features a beautiful, cascading design for a classic look. Available for the Solatube 160DS and 290DS Daylighting System.



### Classic Vusion™ Diffuser

Featuring a classically stunning design, the Vusion Diffuser delivers radiant light that complements any room. Available for the Solatube 160DS and 290DS Daylighting System.



### OptiView – Round or Square

The unique dazzling lens of OptiView delivers artful views of the sky in a low profile design. Available for the Solatube 160DS and 290DS Daylighting System.



### Just Frost – Round or Square

Simply stunning. JustFrost showcases sunlight in a clean contemporary design. Available for the Solatube 160DS and 290DS Daylighting System.



### Dual Lens Double Glazing

Effects Lens provides insulation properties similar to double glazing. Comes complete with our 160DS or 290DS – square or round.



Visit [www.hometech.co.nz](http://www.hometech.co.nz)  
for our full range

# Features and Benefits

## Solatube™ Daylighting System

### Capture Zone

The Raybender® 3000 Technology along with the LightTracker™ Reflector within the dome will capture, harvest and push daylight down the System.

### Transfer Zone

99.7% spectral reflectivity means light is pushed down the tube – with very little light loss.

### Delivery Zone

Diffused daylight at the Delivery Zone has the appearance of a light fixture. Also, minimal heat loss and heat gain assists with earning the Energy Rating.

#### 10 Year Warranty

- Peace of mind as the whole product is warranted

#### BRANZ Appraised [No: 665]

- Testing for weather-proofing to the New Zealand Building Code standards; the system, flashings and installation process are Appraised. Acceptable Solution under E2

#### Energy-Star Rated [in United States]

- Patented Cool Tube technology draws heat away from the ceiling fixture
- Energy-Star Rated - minimal heat gain during summer and heat loss during winter
- No compromise of Energy Efficiency membrane under Building Code Clause H1.

#### Leak Proof Guarantee

- Peace of mind that the System will not leak

#### Highest Performance Guarantee

- Unlike any other product on the market, the Solatube™ Daylighting System comes with a highest performance guarantee. See website for details

#### Smaller Roof Penetration

- For increased light output

#### Dual Lens Double Glazing

- The Effects Lens provides insulation properties similar to double glazing.

#### Better than a Traditional Skylight

- Traditional skylights have little control over glare, hot spots, heat gain, heat loss and uniform illumination
- Solatube™ Daylighting Systems provide quality natural light without glare, heat gain, leaking or heat loss through the roof!

#### Feel Good Factor

- The Solatube™ Daylighting System resembles a light fitting, but the natural light brought into the home is proven to make people feel better than artificial light

#### Influences Human Performance

- Proven increased student performance when under daylight
- Greater productivity
- Feel good factor influences behaviour
- Proven increased retail sales

Model	Tube Size (diameter)	EDCS*	Potential Tube Length
Solatube® 160 DS	250mm	1032cm²	6m+

Solatube® 290 DS	350mm	1871cm²	9m+
------------------	-------	---------	-----

\* EDCS (Effective Daylight Capture Surface) represents the surface area of the dome that collects and redirects sunlight. For comparison, a clear dome with no lens (i.e. competitor product) on a typical 250mm tube system has an EDCS of 199.4 cm², compared to Solatube™ Daylighting System 160DS 1032cm².



## Features

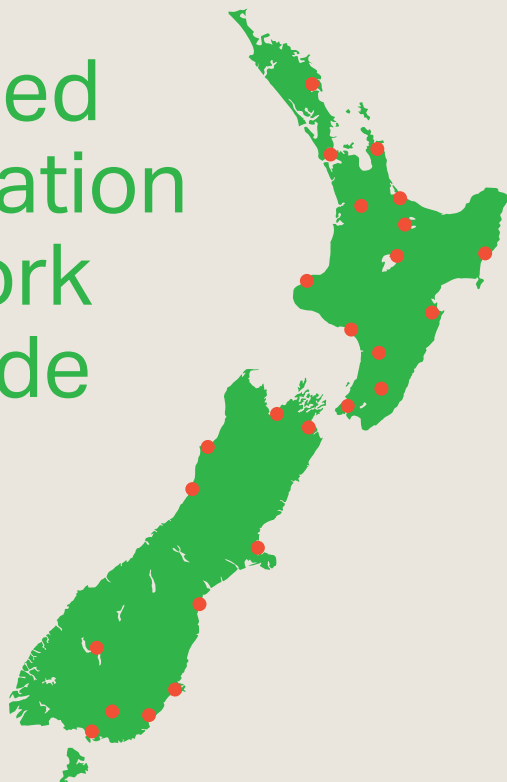
## Benefits

Capture Zone	Raybender® 3000 Technology Patented daylight capturing dome lens	<ul style="list-style-type: none"> <li>• Redirects low-angle sun</li> <li>• Rejects overpowering summer midday sunlight</li> <li>• Consistent daylighting throughout the day</li> </ul>
	LightTracker™ Reflector Patented in-dome reflector faces north	<ul style="list-style-type: none"> <li>• Redirects low-angle winter sunlight from early morning to late afternoon</li> <li>• Increased light input for increased light output</li> <li>• Intercepts daylighting that would otherwise pass through the dome</li> <li>• Unsurpassed year-round performance</li> </ul>
	Effective Daylight Capture Surface (EDCS) Small roof penetration	<ul style="list-style-type: none"> <li>• The EDCS captures more daylight than any other product on the market</li> <li>• The 160DS model has an effective daylight capturing surface of 1032cm<sup>2</sup>. 290DS = 1871cm<sup>2</sup></li> </ul>
	Injection Moulded Dome	<ul style="list-style-type: none"> <li>• Hardwearing, impact resistant acrylic dome</li> <li>• Will not craze or crack with time</li> </ul>
	Condensation Tract	<ul style="list-style-type: none"> <li>• Eliminate moisture build up within the system at its source</li> </ul>
	UVA and UVB Omitted	<ul style="list-style-type: none"> <li>• Ultraviolet transmission of 0.03% so no fading of clothing or furnishings</li> </ul>
	Neoprene Seal	<ul style="list-style-type: none"> <li>• Reduces heat transfer between dome and tubing, while reducing condensation</li> </ul>
	Flashings	<ul style="list-style-type: none"> <li>• Leak proof, BRANZ Appraised [No: 665] design installed by BRANZ Appraised Certified Installation Consultants</li> <li>• No Lead content</li> <li>• One piece, seamless, leak proof flashing for almost any roof type</li> </ul>

Transfer Zone	Spectralight® Infinity Solid Aluminium Tubing	<ul style="list-style-type: none"> <li>• 99.7% Spectral reflectivity</li> <li>• World's most reflective tubing</li> <li>• Purest colour rendition possible, natural light. Refer to Colour Rendering Index (CRI) on page 7</li> </ul>
	Spectral Reflectivity vs. Total Reflectivity	<ul style="list-style-type: none"> <li>• Limited light loss - only 0.3% per light bounce rather than 3% light loss for 97% Total Reflectivity</li> <li>• Light is diffusing and bouncing</li> <li>• Long distance tube runs with limited light loss</li> </ul>
	90° and 30° bends	<ul style="list-style-type: none"> <li>• Put daylight where wanted as tube can be angled to most directions. No structural limitations</li> </ul>
	99.9% True Colour Rendition (CRI)	<ul style="list-style-type: none"> <li>• No colour shift of visible light spectrum from exterior to interior</li> </ul>
	Transfer light up to 15 metres	<ul style="list-style-type: none"> <li>• Light up lower level floor</li> </ul>

Delivery Zone	Dual Lens Double Glazing	<ul style="list-style-type: none"> <li>• The Effects Lens Dual Array Technology provides insulation properties similar to double glazing.</li> </ul>
	Fresnel Lens	<ul style="list-style-type: none"> <li>• Optically designed for daylight diffusion</li> </ul>
	Daylight Dimmer™	<ul style="list-style-type: none"> <li>• Controllable daylighting at the flick of a switch - Infinitely variable</li> </ul>
	Rubber Seal on Diffuser	<ul style="list-style-type: none"> <li>• Eliminates air infiltration into the light shaft, minimising the rate of non-solar heat loss or gain</li> </ul>
	Light Add-on Kit	<ul style="list-style-type: none"> <li>• Night time light with the flick of a switch</li> </ul>
	Designer Options	<ul style="list-style-type: none"> <li>• Seamlessly blends in with other light fixtures on your ceiling</li> </ul>
	Vent Add-on Kit (160 DS only)	<ul style="list-style-type: none"> <li>• Perfect for any moist room</li> <li>• Extracts steam and odours</li> </ul>

# Certified Installation Network NZ Wide



## Established in 1992

Licensed installer network nationwide

Meets all New Zealand codes and standards

Unconditionally performance guaranteed

Custom designed solutions for your home

Daylighting design specialist available for commercial/architectural projects

BRANZ Appraised [No. 665 (2009)]

Call our friendly staff **0800 HOMETECH**  
(466 383) or visit [www.hometech.co.nz](http://www.hometech.co.nz)  
to find out more information



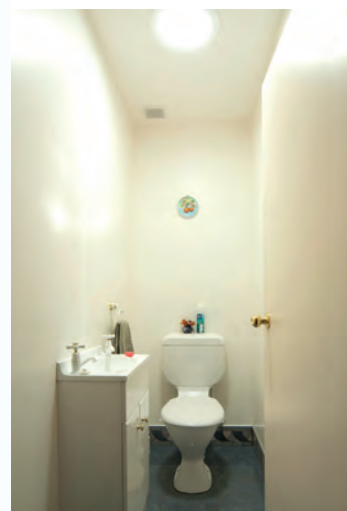
**SOLATUBE**

Bring daylight  
into any room

Before



After



**hometech**  
Better spaces. Better lives.