

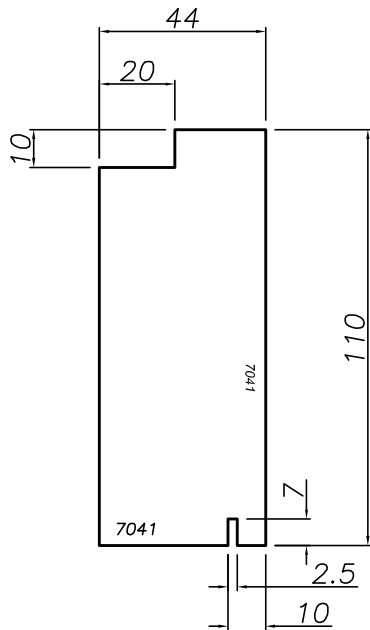


COMPLIANT TIMBER JOINERY

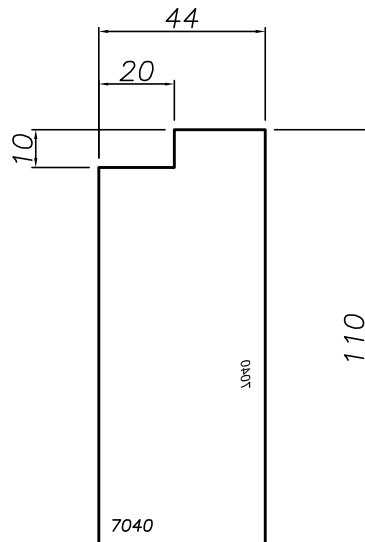
NEW ZEALAND LIMITED

*7000 Series
Bifold Window and Door,
80 Series Gear*

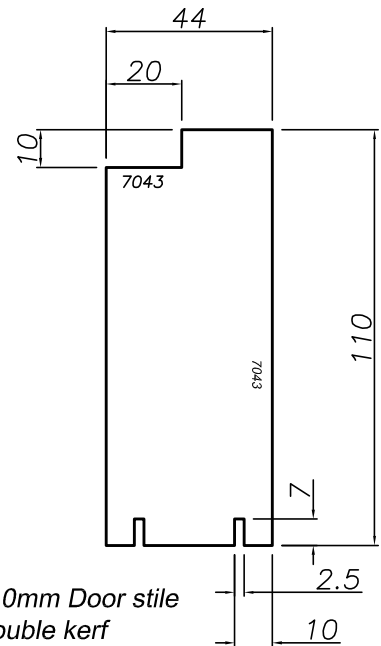
Profiles - Single Glazed



7041 110mm Door stile
1 kerf inner

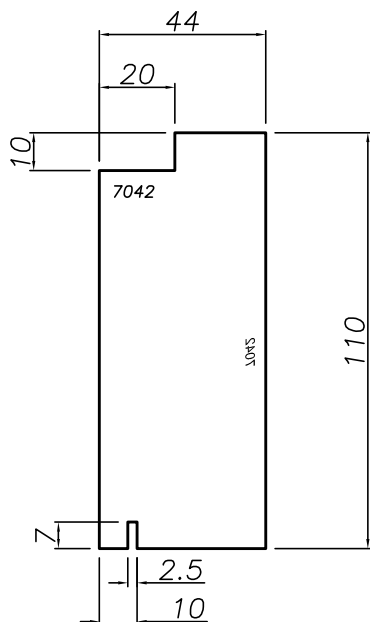


7040 110mm Door stile
plain end

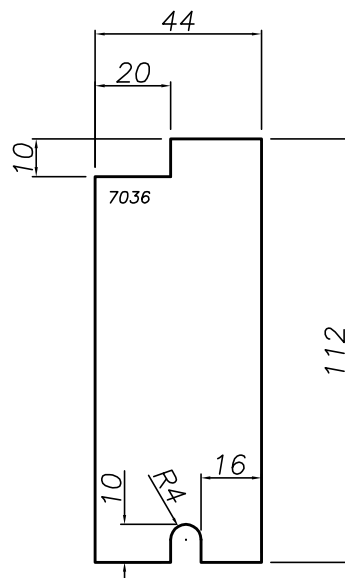


7043 110mm Door stile
double kerf

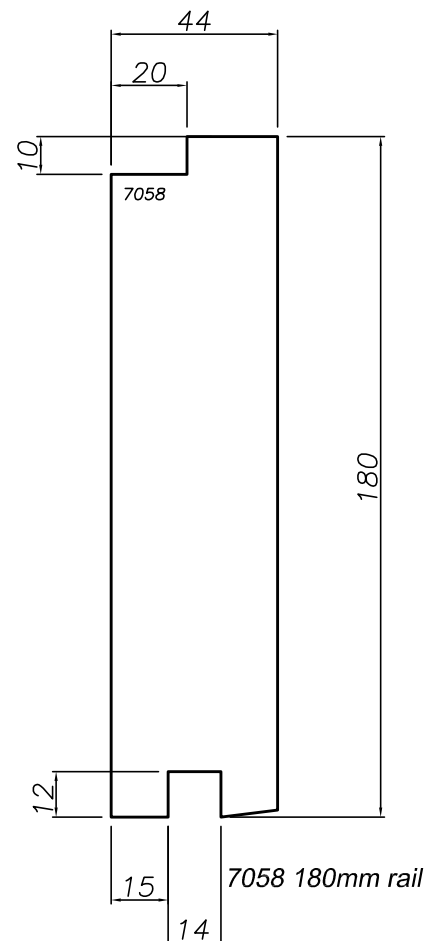
Note;
Bifold windows and Bifold doors are the same thing, except Bifold windows may have stiles at 70mm wide, top rails at 70mm deep and bottom rails at 90mm deep. All other details remain the same.



7042 110mm Door stile
1 kerf outer



7036 112mm Top Rail
with weather groove

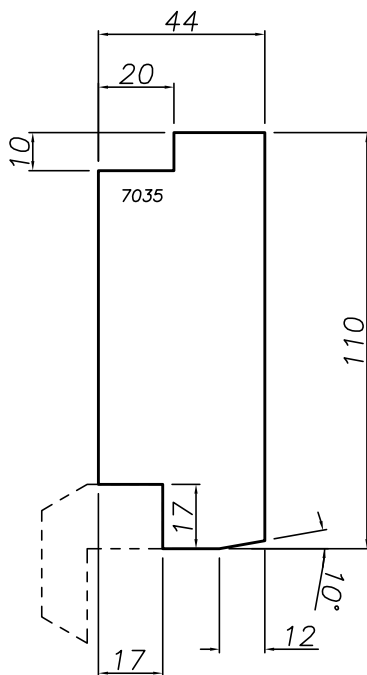


7058 180mm rail

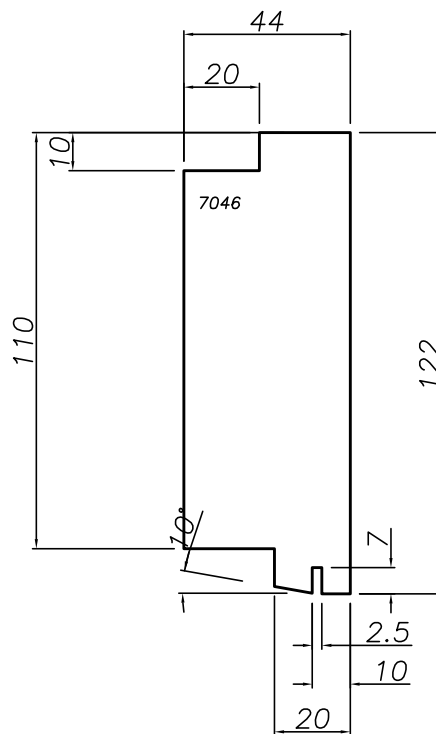


No	Revision	Date	Detail No:
			Scale: 1:2 Date: 1/6/2012
			Drawing No: S7C-01-01

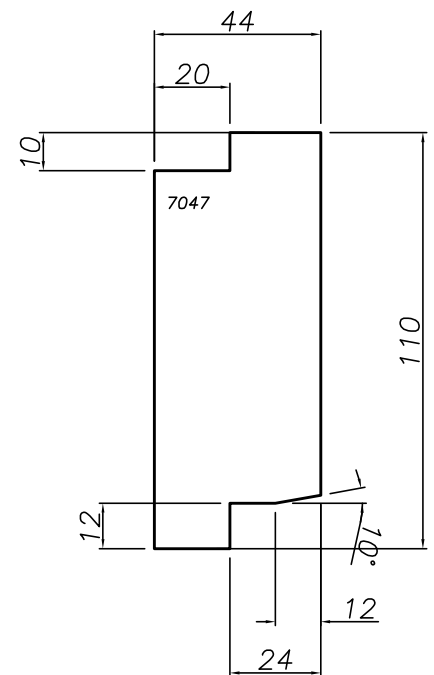
Profiles - Single Glazed



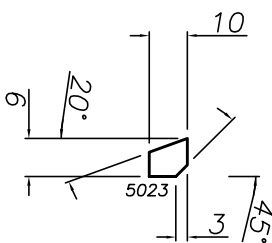
7035 110mm Door stile
with 7024 astragal rebate



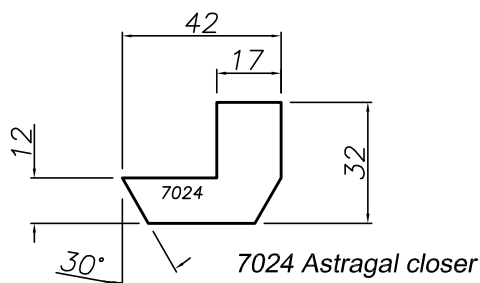
7046 110mm Door stile
French door 1st closing



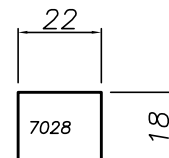
7047 110mm Door stile
French door 2nd closing



5023 Single Glazing
Bead



7024 Astragal closer



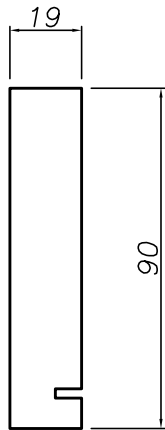
7028 rod system trench
fillet - varies by system
type

Note;
Bifold windows and Bifold doors are the same thing, except Bifold windows may have stiles at 70mm wide, top rails at 70mm deep and bottom rails at 90mm deep. All other details remain the same.



No	Revision	Date	Detail No:
			Scale: 1:2 Date: 1/6/2012
			Drawing No: S7C-01-02

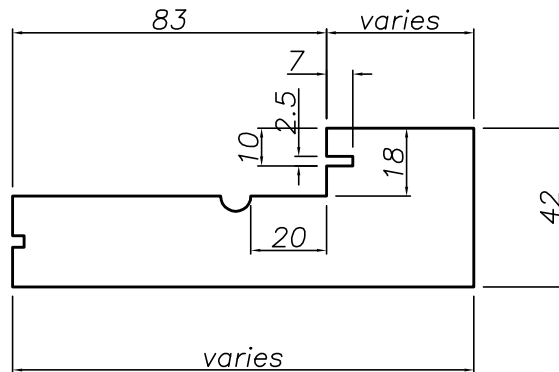
Profiles - Single Glazed



6006 Facing board

Kerf not needed in bifold door product facing boards.

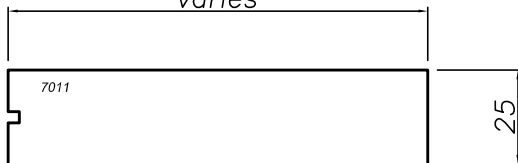
7052 SG outboard track Jamb



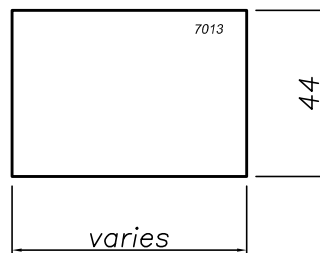
Notes;

- Single glazed panels are 44mm thick.
- Rebate sizes are panel thickness plus 8mm.
- The sill remains the same basic profile (except the guide channel recess) for both single and double glazed versions so will show more nose when used with single glazed frame components
- 7011, 7013 and 7034 can be one piece

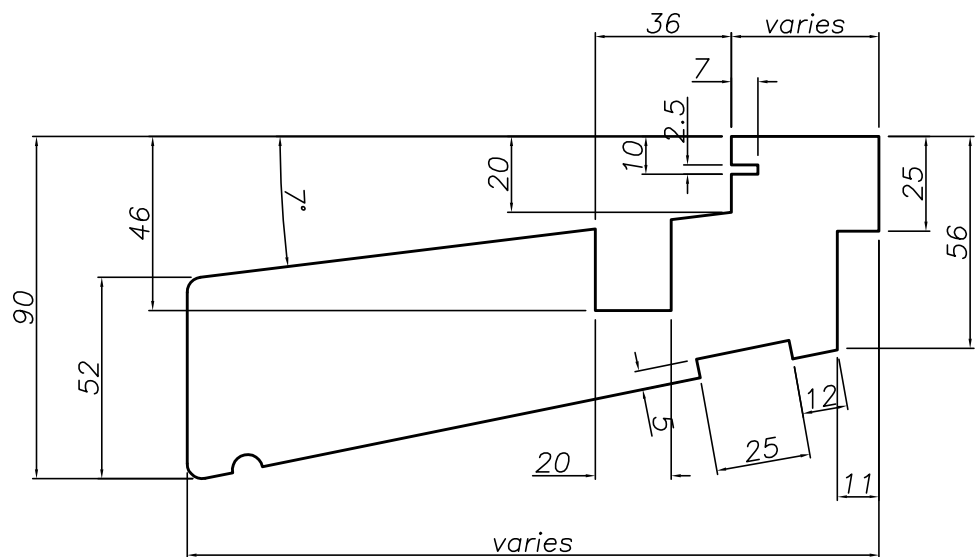
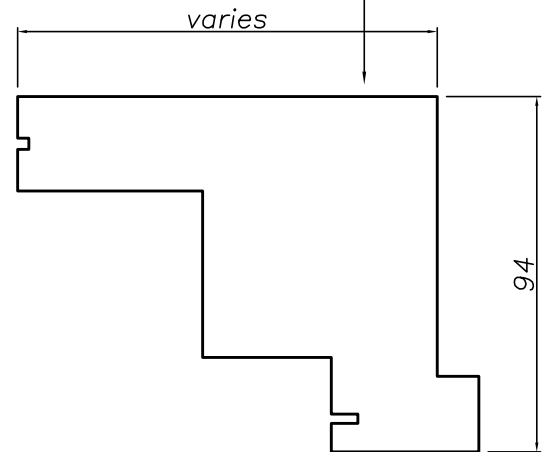
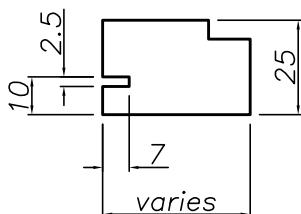
7011 SG Head base
varies



7013 Head packer



7034 Head rebate for outboard track

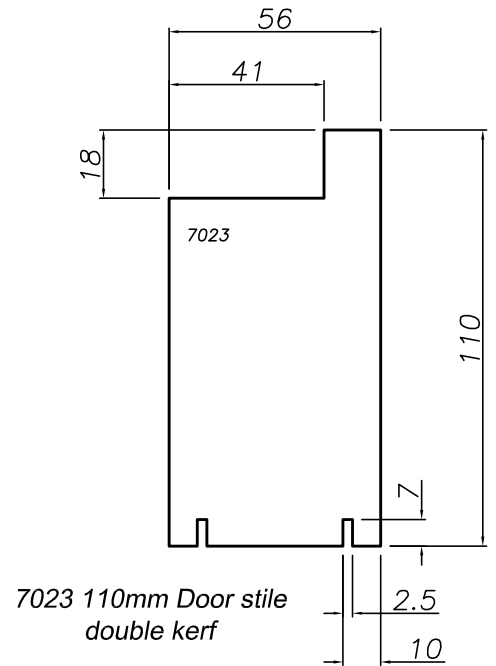
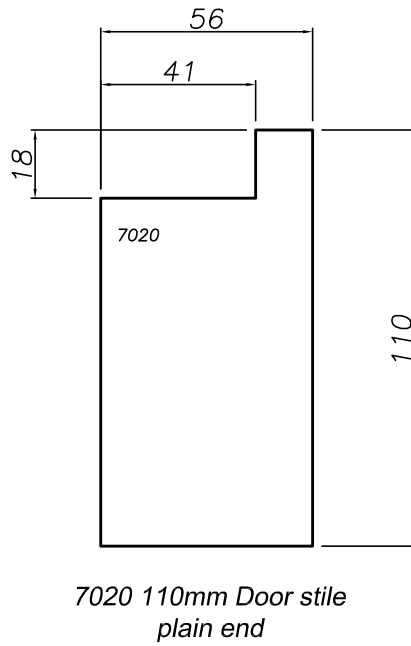
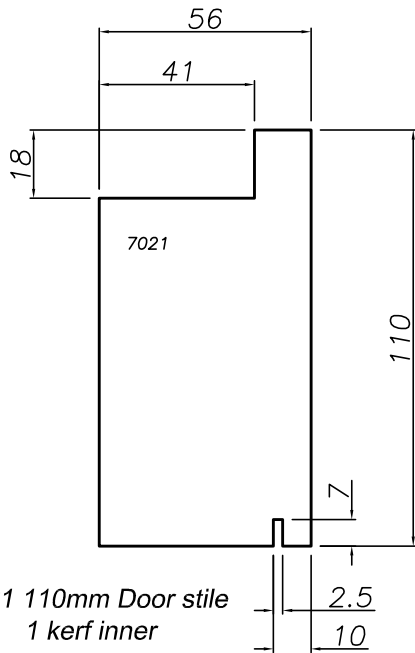


7051 SG sill for outboard track

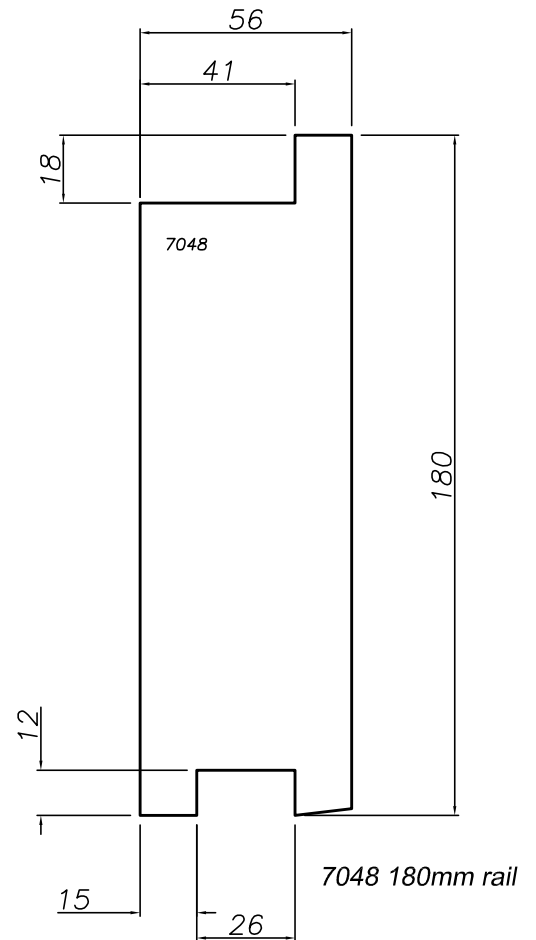
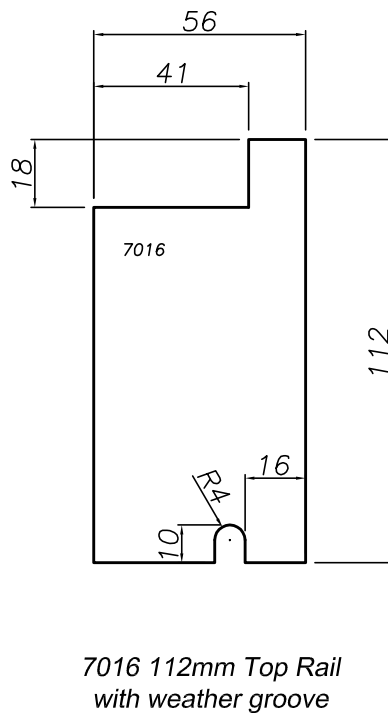
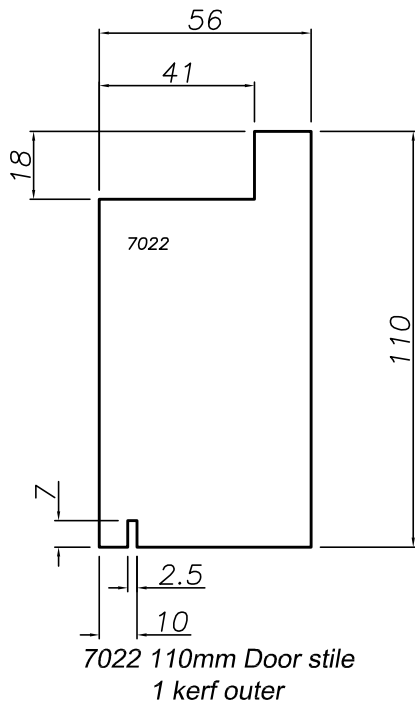


No	Revision	Date	Detail No:
			Scale: 1:2 Date: 1/6/2012
			Drawing No: S7C-01-03

Profiles - Double Glazed

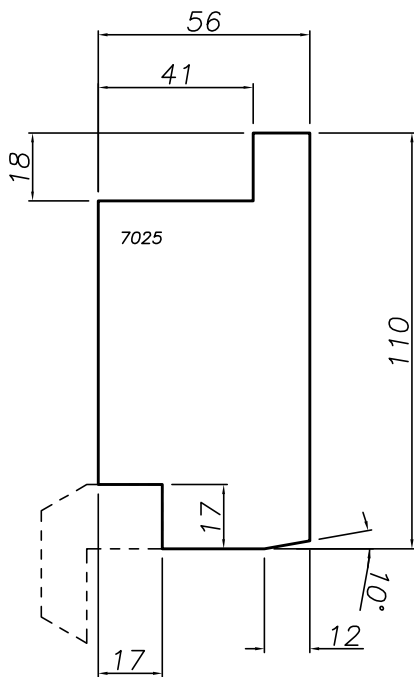


*Note;
Bifold windows and Bifold doors are the same thing, except Bifold windows may have stiles at 70mm wide, top rails at 70mm deep and bottom rails at 90mm deep. All other details remain the same.*

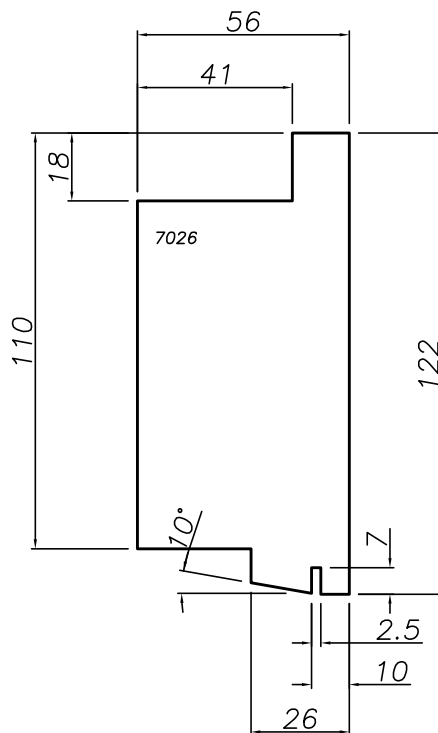


No	Revision	Date	Detail No:
			Scale: 1:2 Date: 1/6/2012
			Drawing No: S7C-01-04

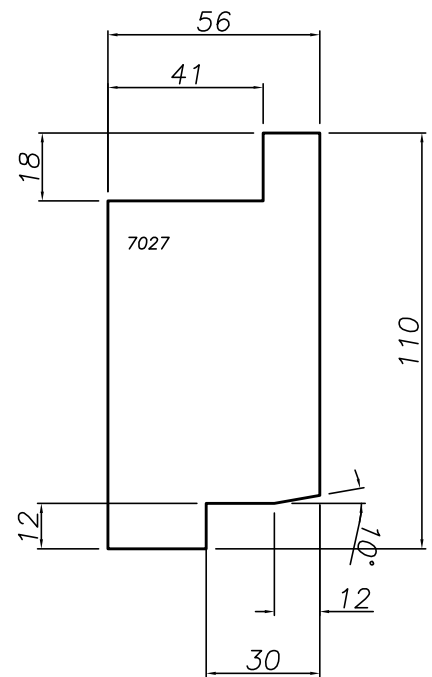
Profiles - Double Glazed



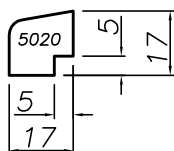
7025 110mm Door stile
with 7024 astragal rebate



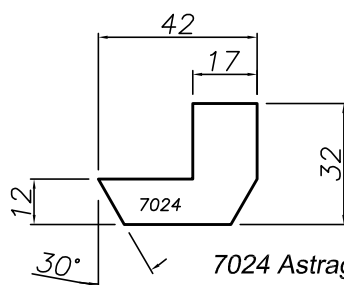
7026 110mm Door stile
French door 1st closing



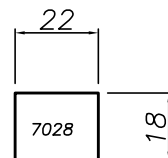
7027 110mm Door stile
French door 2nd closing



5020 Double Glazing
Bead



7024 Astragal closer



7028 Twin bolt trench
fillet, varies by system

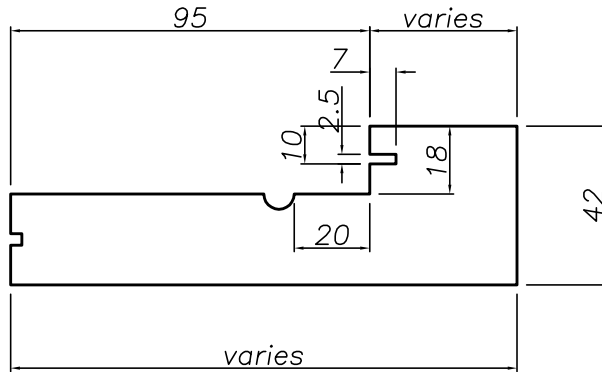
Note;
Bifold windows and Bifold doors are the same thing, except Bifold windows may have stiles at 70mm wide, top rails at 70mm deep and bottom rails at 90mm deep. All other details remain the same.



No	Revision	Date	Detail No:
			Scale: 1:2 Date: 1/6/2012
			Drawing No: S7C-01-05

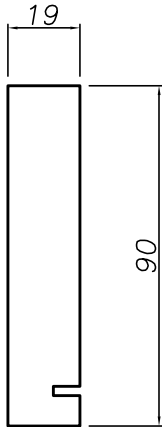
Profiles - Double Glazed

7032 DG outboard track Jamb



Notes;

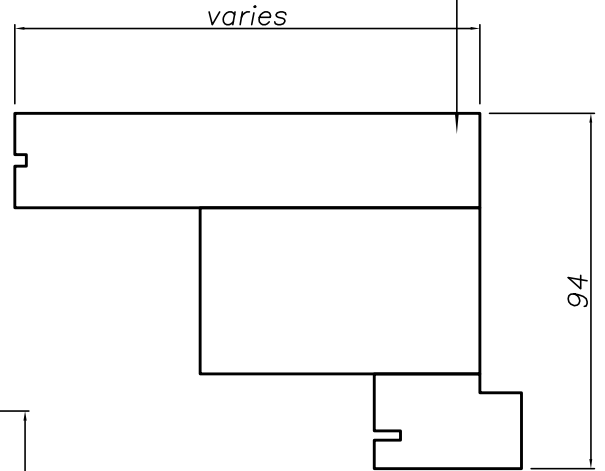
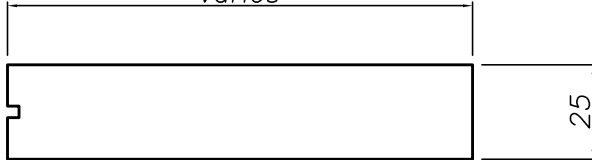
- Double glazed panels are 56mm thick.
- 7001, 7003 and 7034 can be one piece



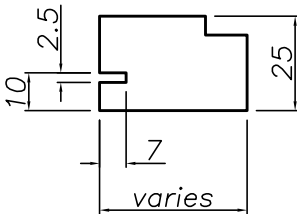
6006 Facing board

Kerf not needed in bifold door product facing boards.

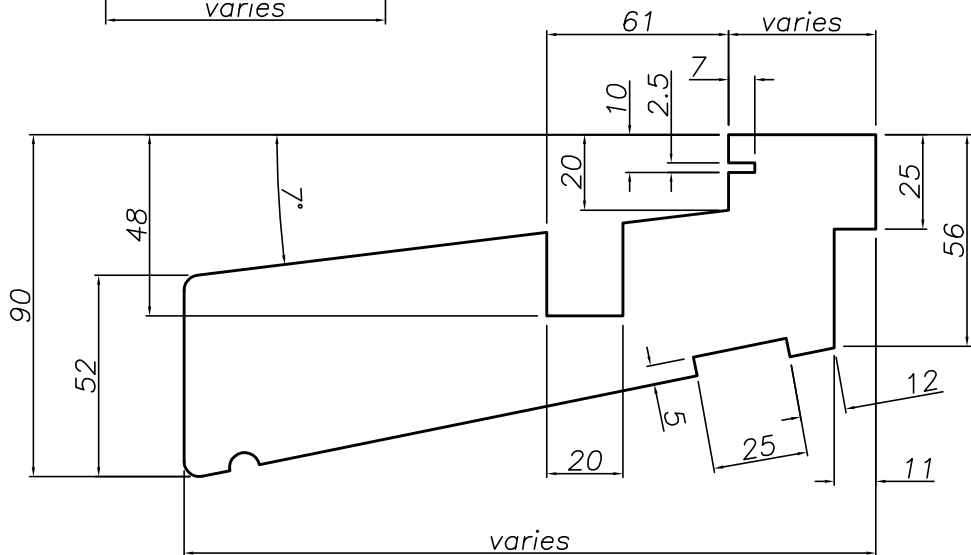
7001 DG Head base



7034 Head rebate for outboard track



7003 Head packer

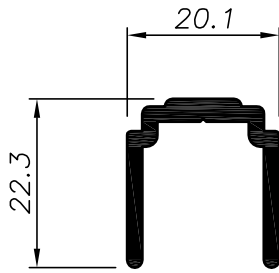


7031 DG sill for outboard track



No	Revision	Date	Detail No:
			Scale: 1:2 Date: 1/6/2012
			Drawing No: S7C-01-06

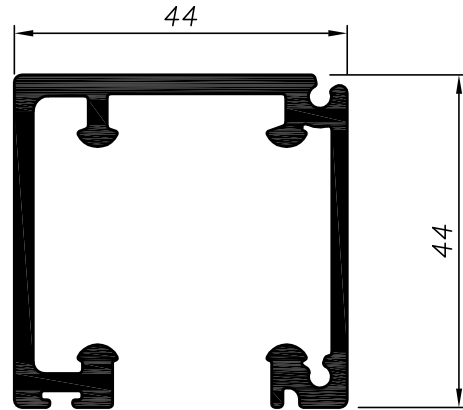
Extrusions and Hardware



Sill Guide track

Part #	Desc.	
11003	Guide track	

Pre drilled, anodised finish (specify Satin or Bronze)



Top Track

Part #	Desc.	
11004	Top Track	

Pre drilled, anodised finish (specify Satin or Bronze)



Part #	Desc.	
16010	Fold seal	



Part #	Desc.	
16011	Frame seal	



Part #	Desc.	
16001	Top Track seal	



No	Revision	Date	Detail No:
			Scale: 1:1 Date: 1/6/2012
			Drawing No: S7C-02-01

Hardware

<i>Part #</i>	<i>Desc.</i>	
.	Flushbolts	

<i>Part #</i>	<i>Desc.</i>	
.	Rod locking system	

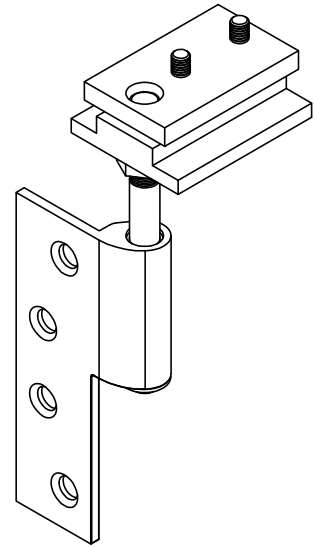
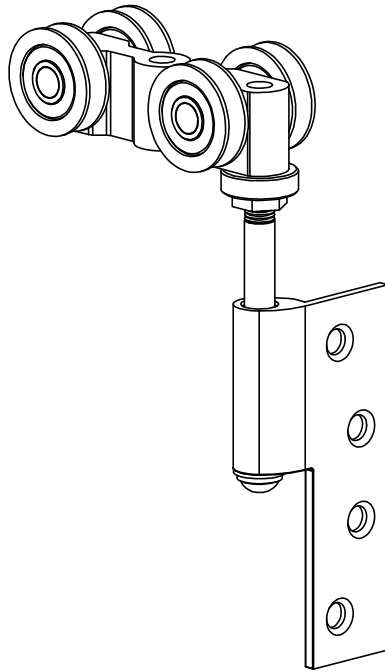
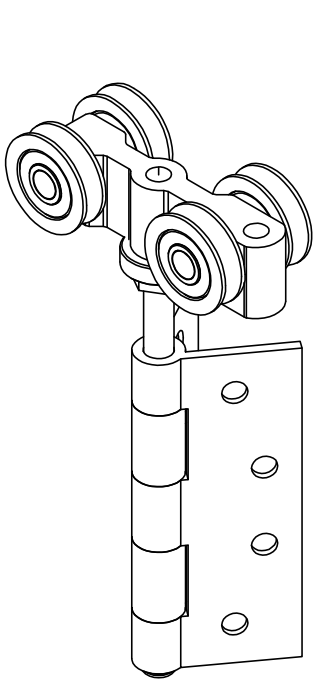
<i>Part #</i>	<i>Desc.</i>	
.	Lockset	

<i>Part #</i>	<i>Desc.</i>	
.	Strike	



No	Revision	Date	Detail No:
			Scale: n.t.s Date: 1/6/2012
			Drawing No: S7C-02-02

Hardware



LH set - Doors fold to the left
RH set - Doors fold to the right

Part #	Desc.
	Top Central Hanger

Part #	Desc.
	Top Leading Hanger LH

Part #	Desc.
	Top Leading Hanger RH

Part #	Desc.
	Top Jamb pivot LH

Part #	Desc.
	Top Jamb pivot RH

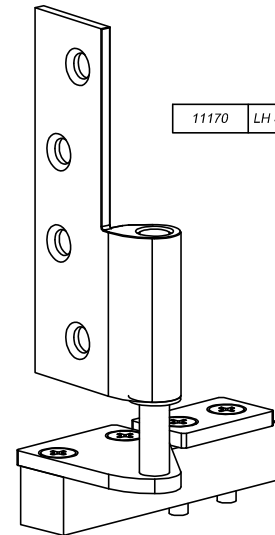
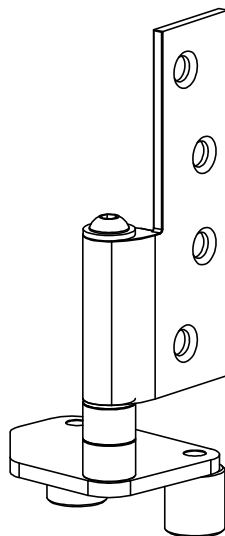
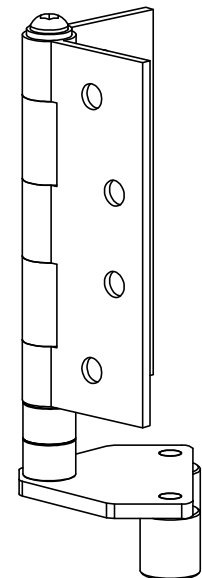
11140	Set (non handed)
-------	------------------

11150	LH Set
-------	--------

11151	RH Set
-------	--------

11170	LH Set
-------	--------

11171	RH Set
-------	--------



Part #	Desc.
	Bottom Central Guide

Part #	Desc.
	Bottom Leading Guide LH

Part #	Desc.
	Bottom Leading Guide RH

Part #	Desc.
	Bottom Jamb Pivot LH

Part #	Desc.
	Bottom Jamb Pivot RH



No Revision

Date

Detail No:

Scale: n.t.s

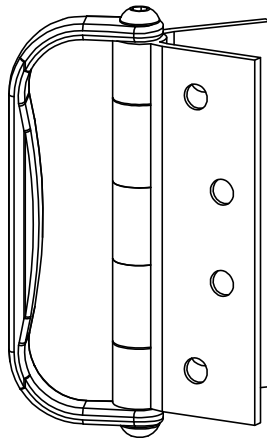
Date: 1/6/2012

Drawing No:

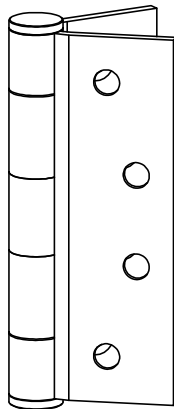
S7C-02-03

This Drawing is Protected by Copyright © JMF New Zealand Ltd

Hardware



Part #	Desc.
11162	Mid Hinge Dee



Part #	Desc.
11160	Jamb hinge / Fold Hinge



No	Revision	Date	Detail No:
			Scale: n.t.s Date: 1/6/2012
			Drawing No: S7C-02-04

Cross Sections

Fold type

3

See detail on relevant page

There is no technical limit to the amount of panels in a unit other than what is practically useable.

Left hand gear is used when panels open to the left
Right hand gear is used when panels open to the right

7 and 8 panel configurations (elevations not shown here) follow the same detailing

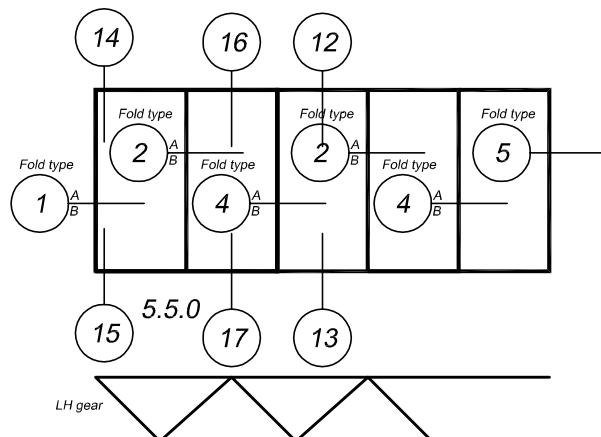
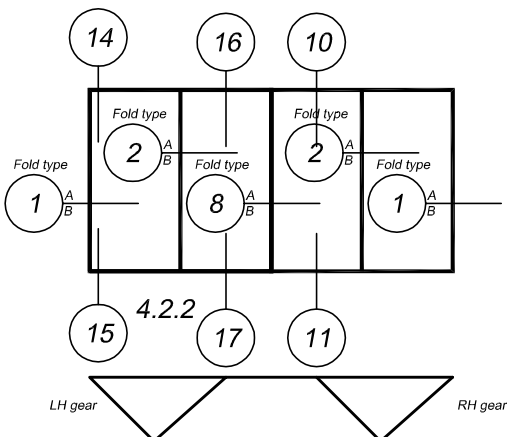
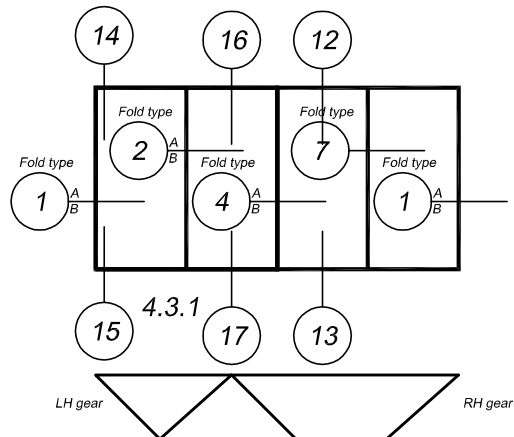
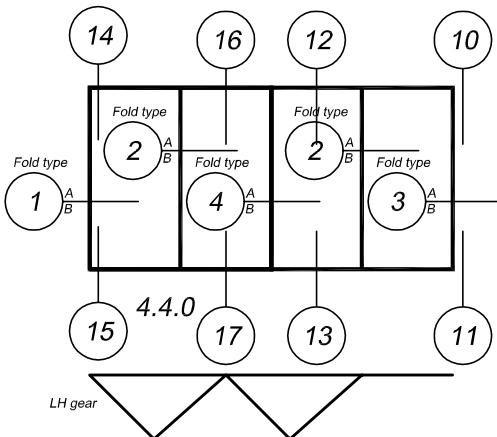
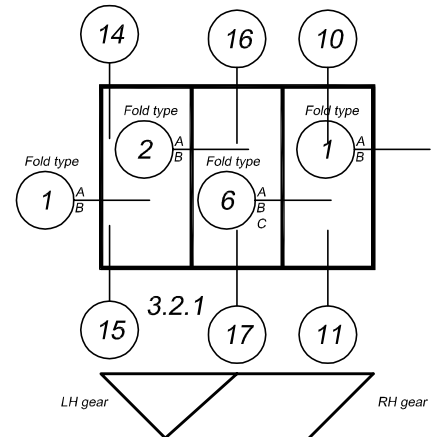
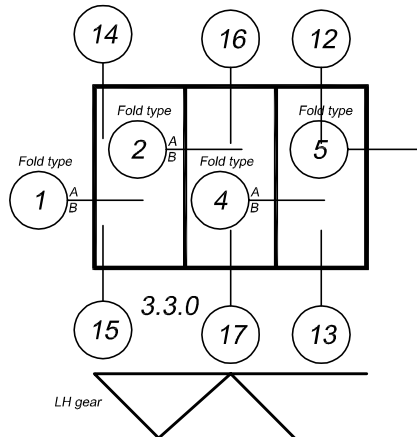
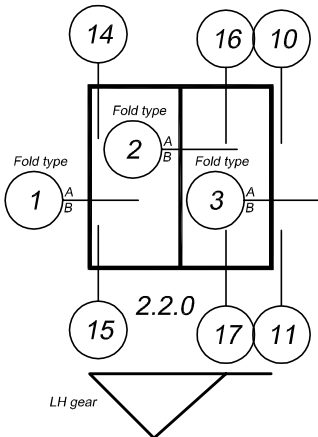
Configuration Type:

Total number of panels
Panels hung from left
Panels hung from right
As viewed from outside

5.4.1

Opposite hand:

5.1.4



No Revision

Date

Detail No:

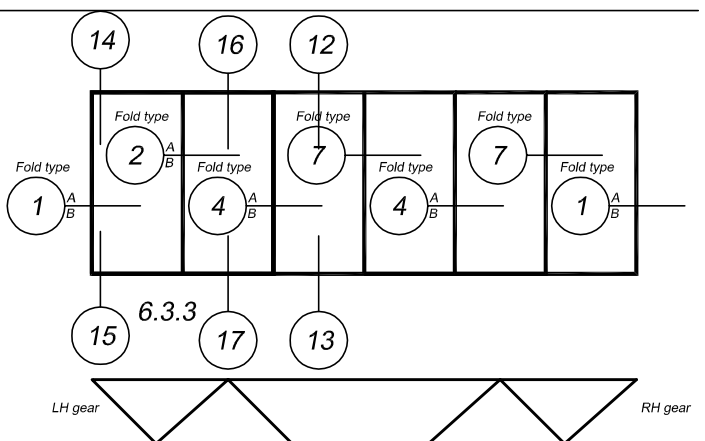
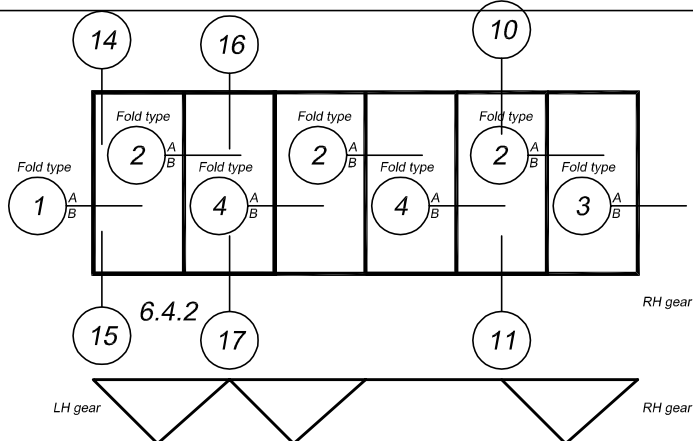
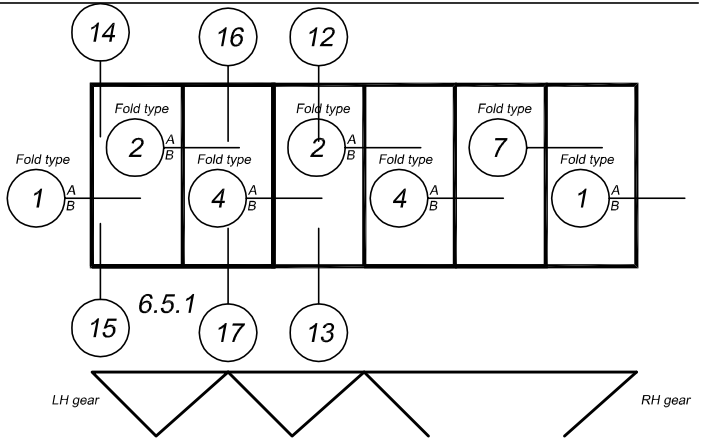
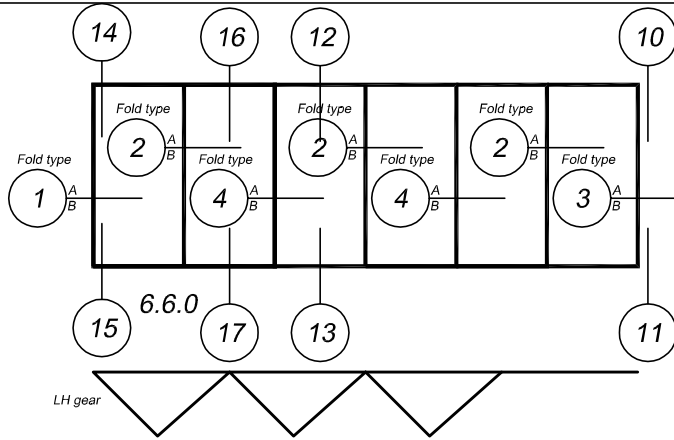
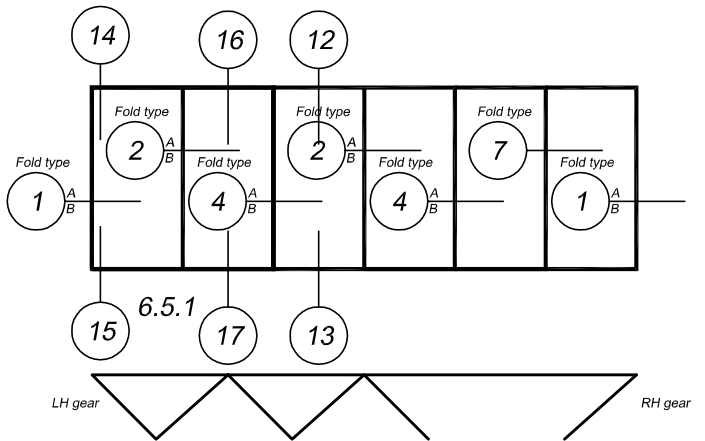
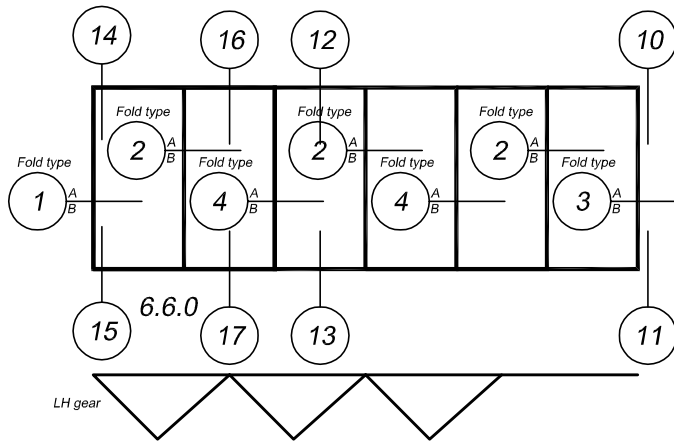
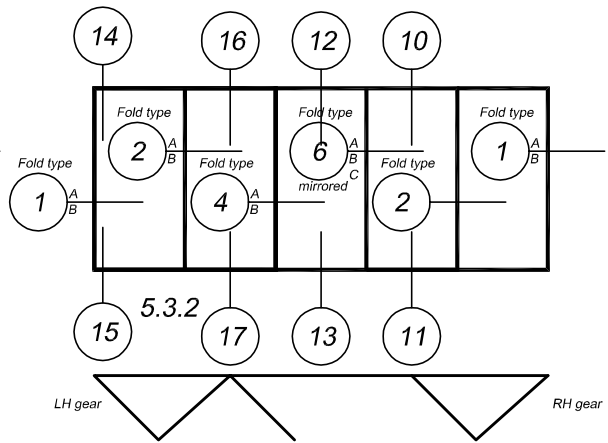
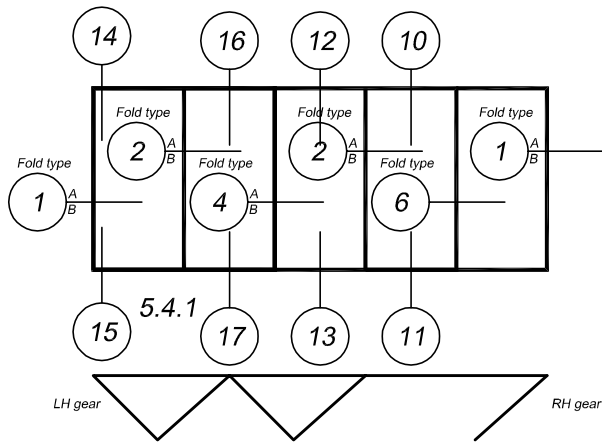
Scale: n.t.s

Date: 1/6/2012

Drawing No:

S7C-03-01

Cross Sections



No Revision

Date

Detail No:

Scale: n.t.s

Date: 1/6/2012

Drawing No:

S7C-03-02

Cross Section Details

INSIDE

8mm jamb gap –
for adjustment
and consistency
with opening end

7032 jamb

-16011 seal to
jamb and sill

-7030 sill

- 30 x 12g SS nails @ 200 ctrs (typical to all sash and panel glazing)

-CL of top track

-CL of bottom
guide track

32


70.32

6006

to CL of ear

5020 glazing
bead

- 7020 plain
end 110mm
door stile

7031 sill — 
6006 facing board.

Jamb pivot set, mortised.
11170 LH (shown)
11171 RH

Jamb pivot set consists
of top and bottom
pivot blocks

Actual pivot blocks
omitted here for clarity
LH gear denotes panels
opening towards the
left jamb.

See Glazing section for full details on glazing methods, materials and drainage requirements.

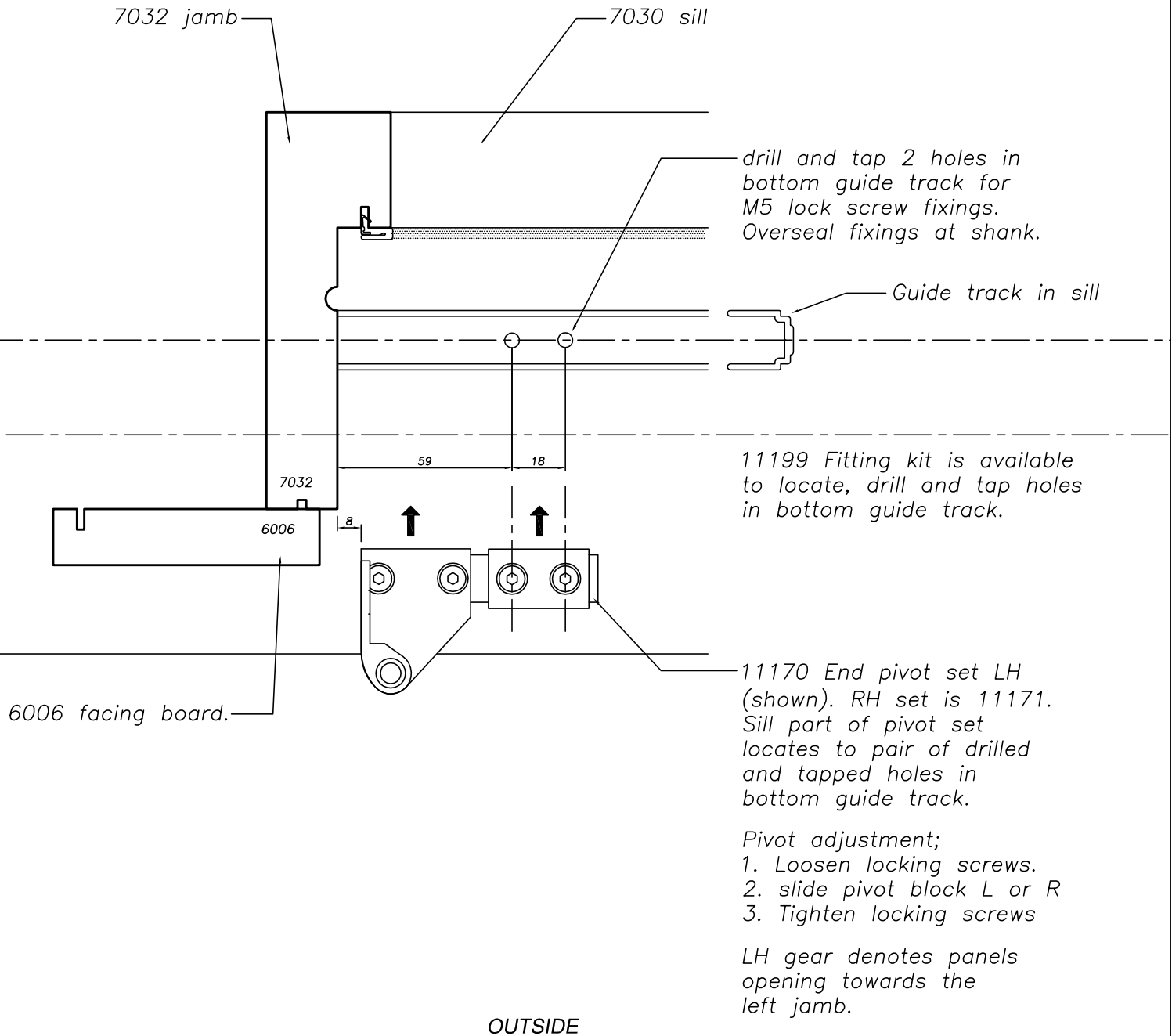
OUTSIDE

Fold type (1A) Pivot Jamb



No	Revision	Date	Detail No:	1A
			Scale: 1:2	Date: 1/6/2012
			Drawing No:	S7C-03-03

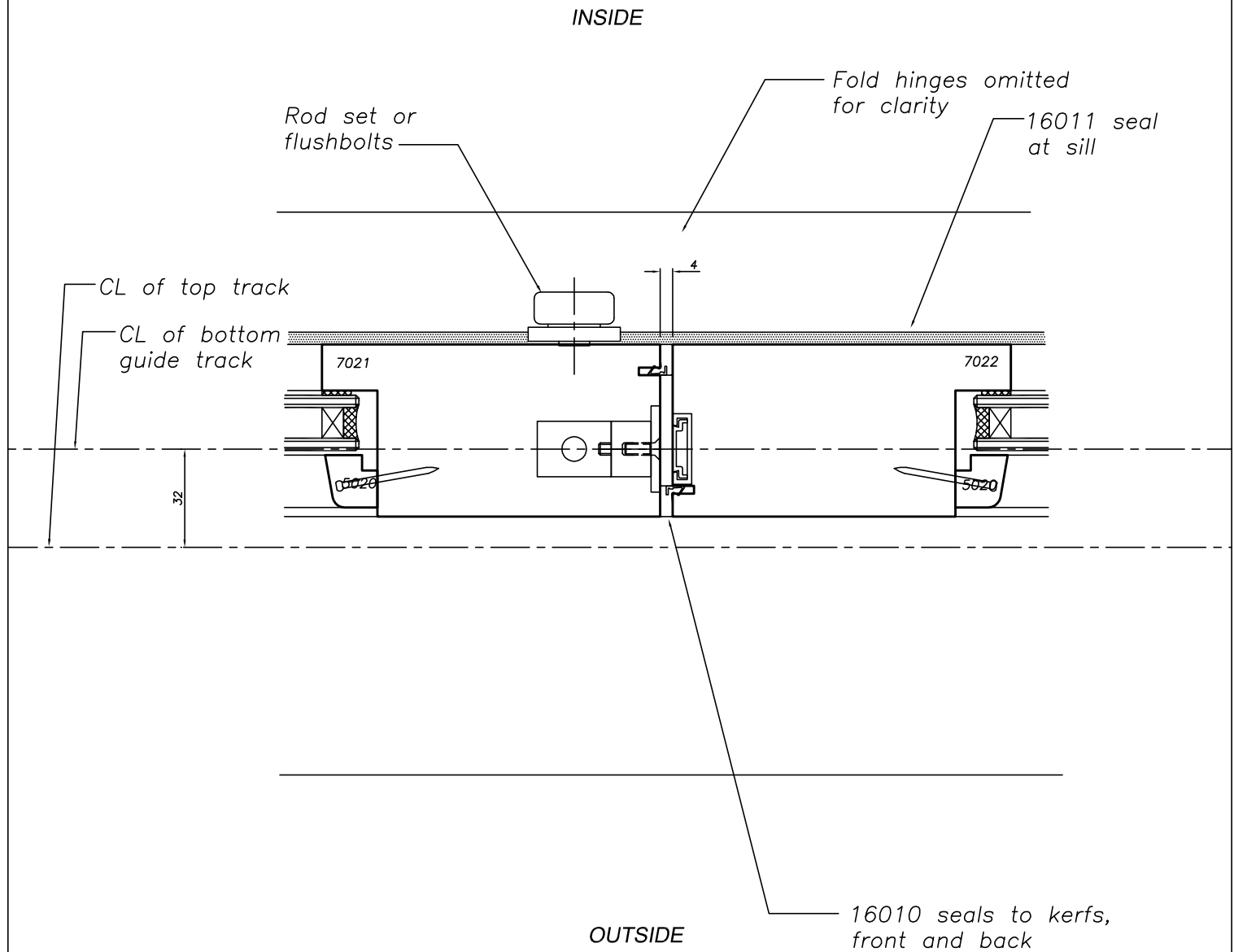
Cross Section Details



Fold type (1B) Pivot Jamb, fitting bottom pivot

No	Revision	Date	Detail No:
			1B
			Scale: 1:2 Date: 1/6/2012
			Drawing No: S7C-03-04

Cross Section Details



Fold type (2A) Standard fold showing twin bolt



No	Revision	Date	Detail No:
			2A
			Scale: 1:2 Date: 1/6/2012
			Drawing No: S7C-03-05

Cross Section Details

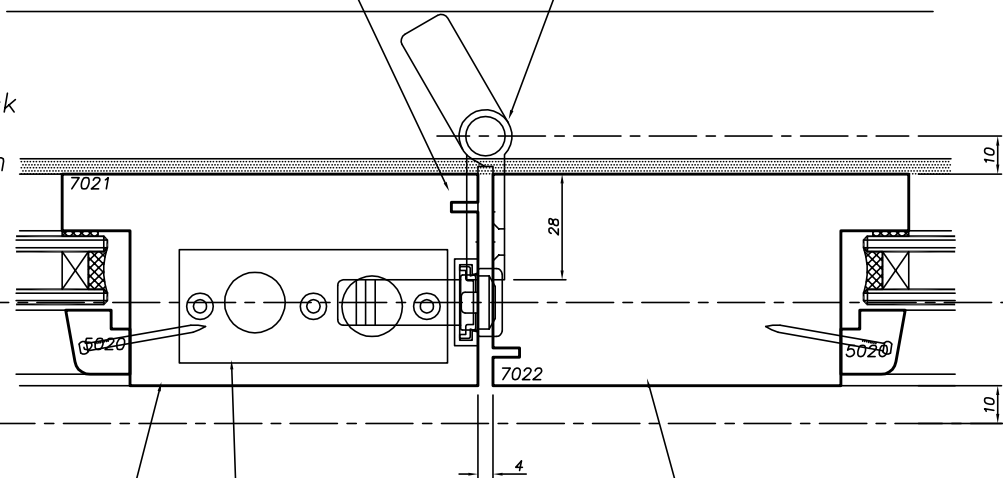
INSIDE

16010 seals to kerfs, front and back. Let around hinge plates. (omitted for clarity)

Fold hinges, mortised.
11160 fold hinge
11162 Dee fold hinge

CL of top track

CL of bottom guide track



7021 110mm door stile 1 kerf inner

Rod guide let into underside of door panel. To suit 12.5mm tips. Guide can be rotated and flipped for adjustment for tightness into head or sill track

7022 110mm door stile 1 kerf outer

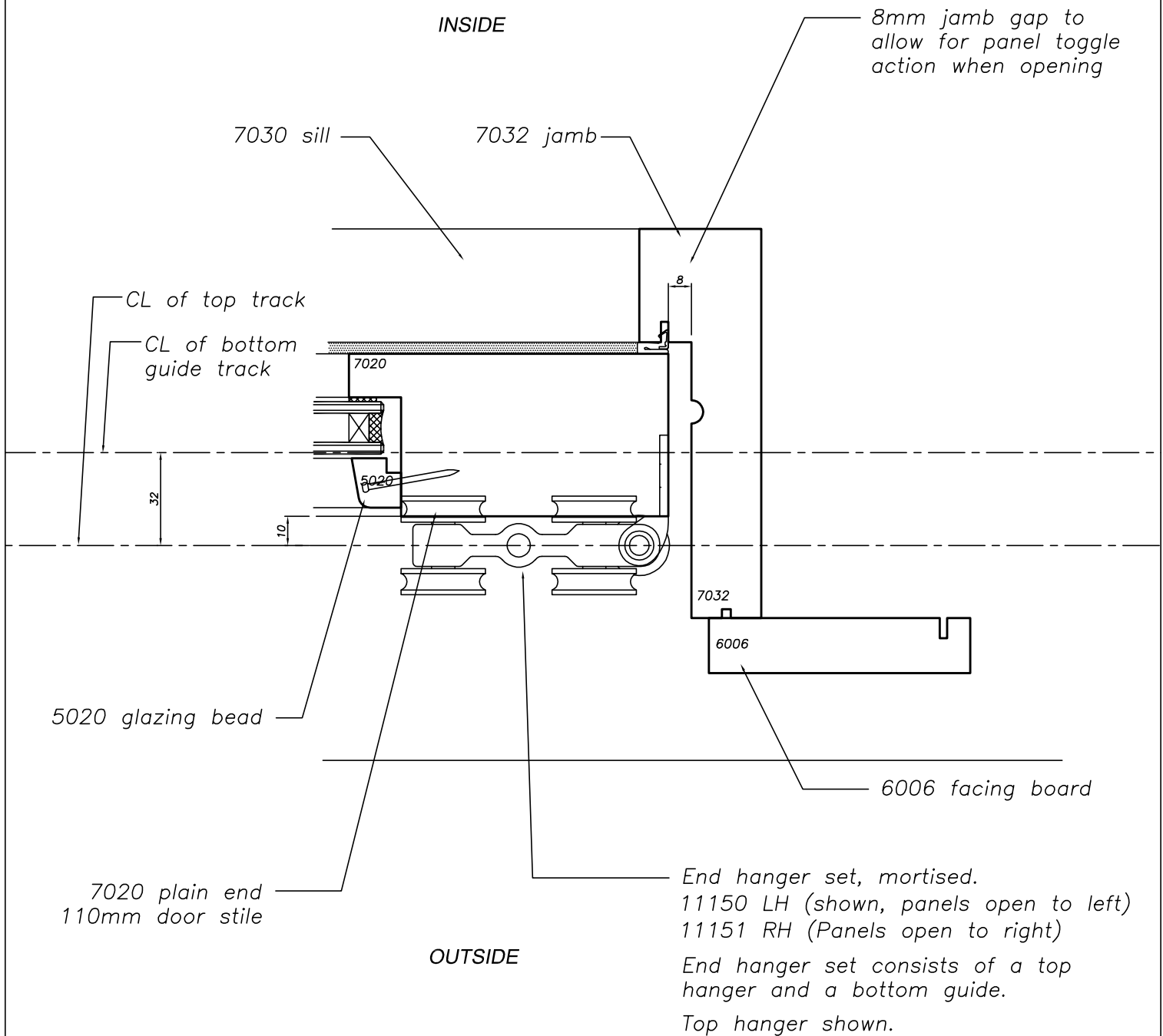
OUTSIDE

Fold type **2B** Standard fold showing lower hinge



No	Revision	Date	Detail No:
			2B
			Scale: 1:2 Date: 1/6/2012
			Drawing No: S7C-03-06

Cross Section Details

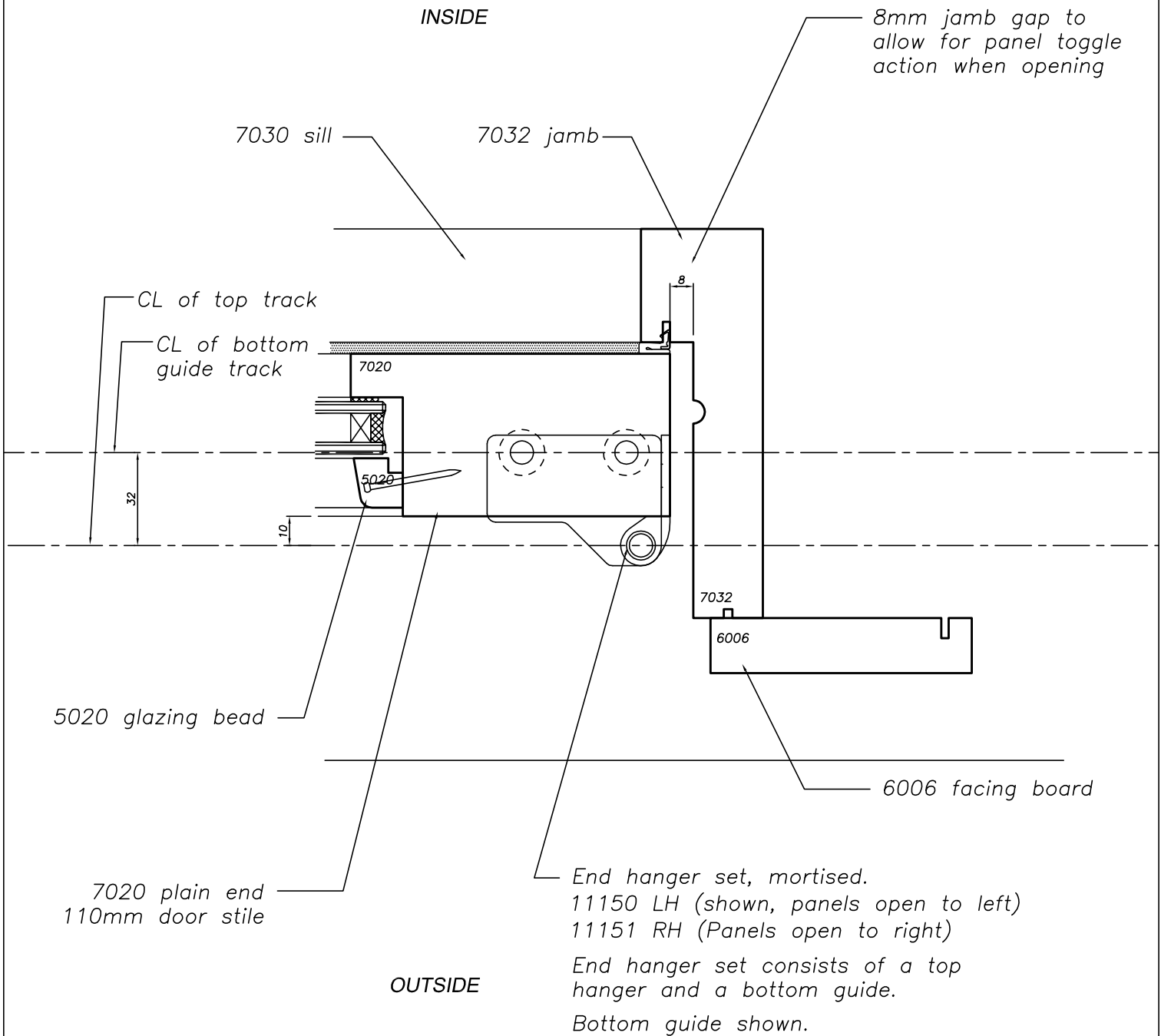


Fold type (3A) pair closing to jamb showing top gear



No	Revision	Date	Detail No:
			3A
			Scale: 1:2 Date: 1/6/2012
			Drawing No: S7C-03-07

Cross Section Details



Fold type (3B) pair closing to jamb showing bottom guide



No	Revision	Date	Detail No:
			3B
			Scale: 1:2 Date: 1/6/2012
			Drawing No: S7C-03-08

Cross Section Details

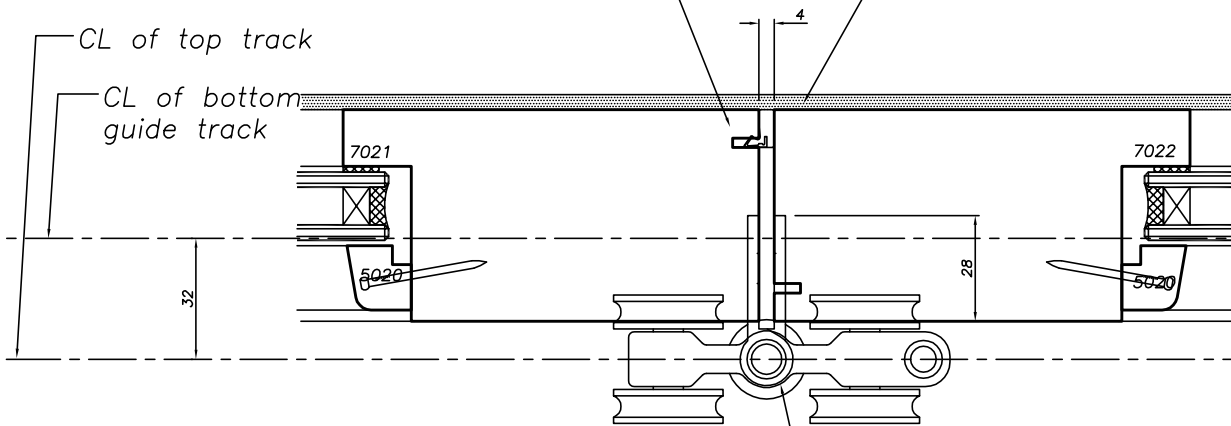
INSIDE

16010 seals to kerfs, front and back. Let around hinge plates. (outer seal omitted for clarity)

16011 seal at sill

CL of top track

CL of bottom guide track



Mid hanger set, mortised.
11140, Non handed

Mid hanger set consists of a top hanger and a bottom guide. Central hinge(s) ordered separately.

Top hanger shown.

OUTSIDE

Fold type (4A) Back fold, showing top gear



No	Revision	Date

Detail No:	4A
Scale: 1:2	Date: 1/6/2012
Drawing No:	S7C-03-09

Cross Section Details

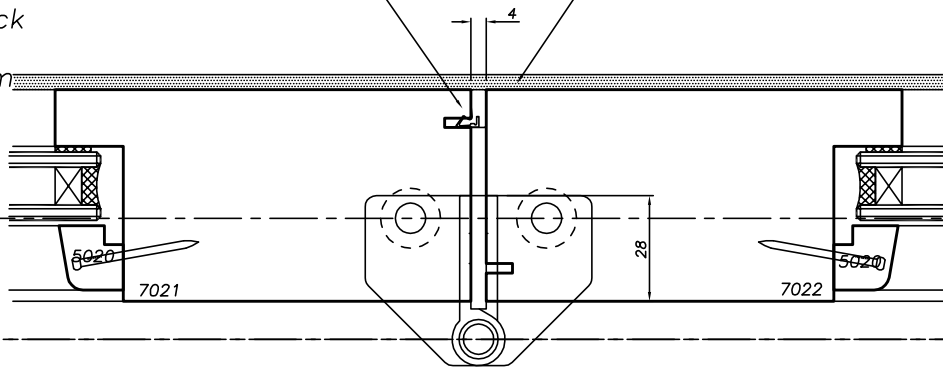
INSIDE

16010 seals to kerfs, front and back. Let around hinge plates. (front seal omitted for clarity)

16011 seal at sill

CL of top track

CL of bottom guide track



Mid hanger set, mortised.
11140, Non handed. (SS Transfer plate appears handed, but isn't)
Mid hanger set consists of a top hanger and a bottom guide.
Bottom guide shown.

OUTSIDE

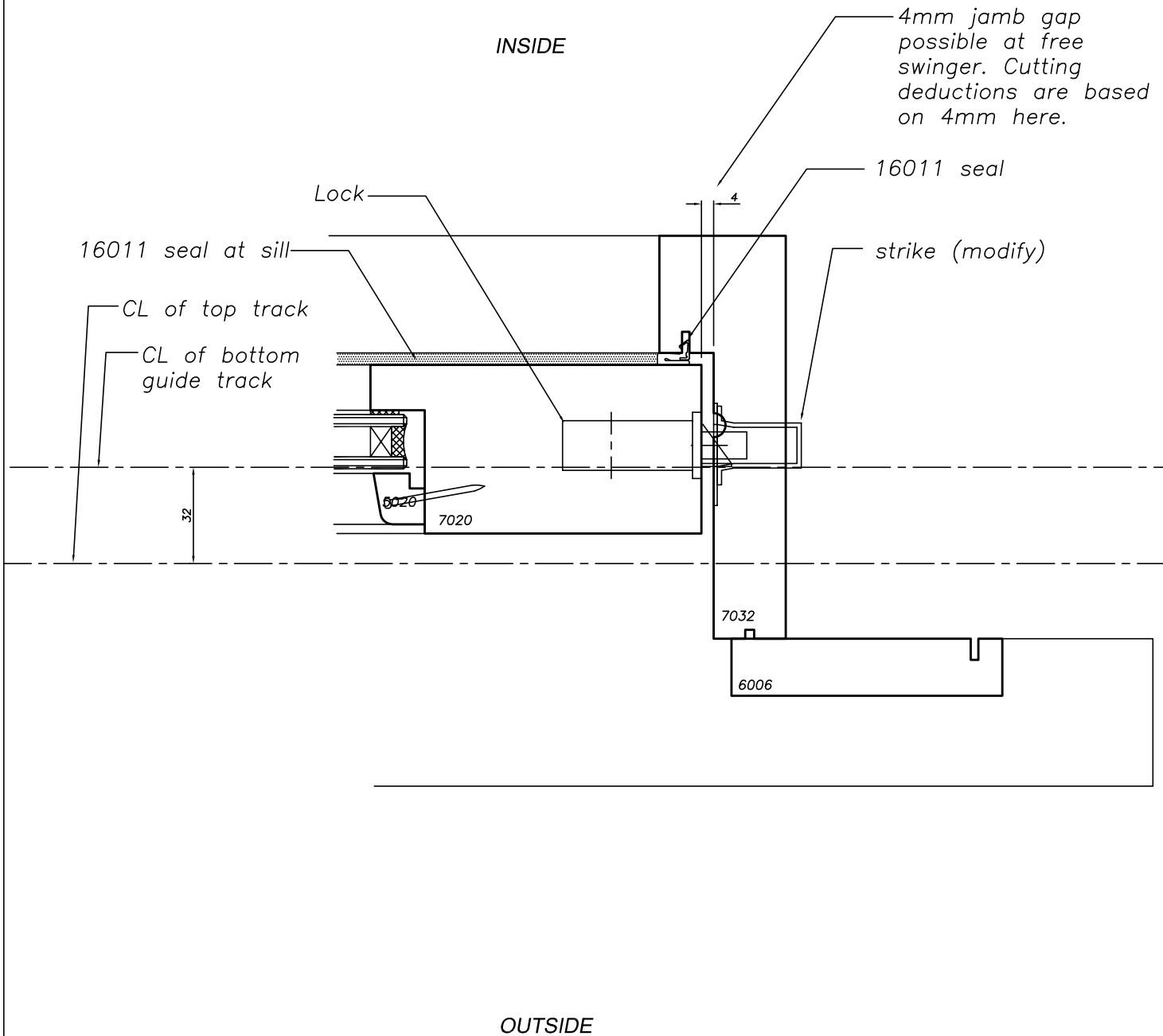
Fold type (4B) Back fold, showing sill gear



No	Revision	Date

Detail No:	4B
Scale: 1:2	Date: 1/6/2012
Drawing No:	S7C-03-10

Cross Section Details



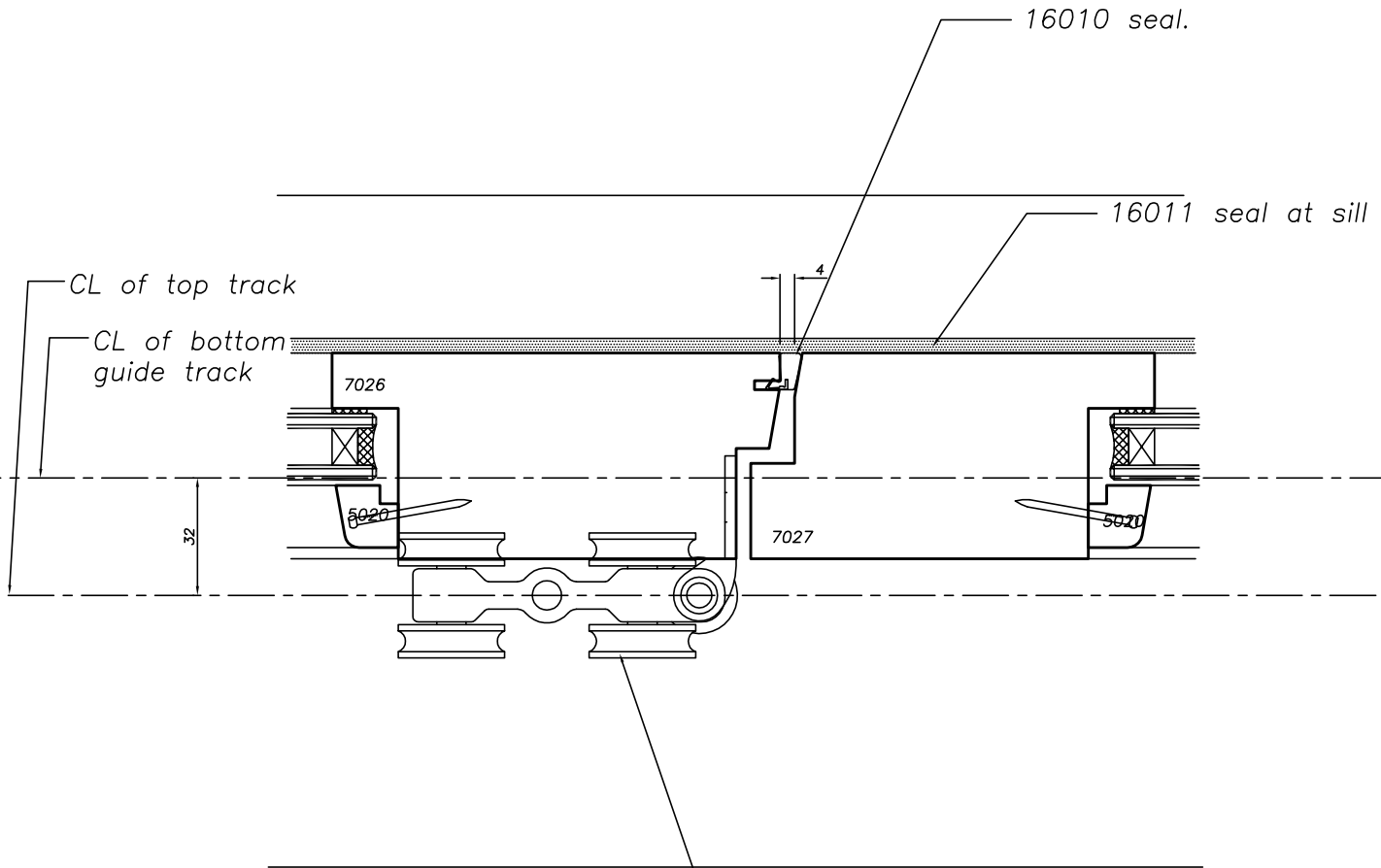
Fold type **5** Free swinger to jamb



No	Revision	Date	Detail No:
			5
			Scale: 1:2 Date: 1/6/2012
			Drawing No: S7C-03-11

Cross Section Details

INSIDE



OUTSIDE

End hanger set, mortised.
 11150 LH (shown, panels open to left)
 11151 RH (Panels open to right)
 End hanger set consists of a top hanger and a bottom guide.
 Top hanger shown.

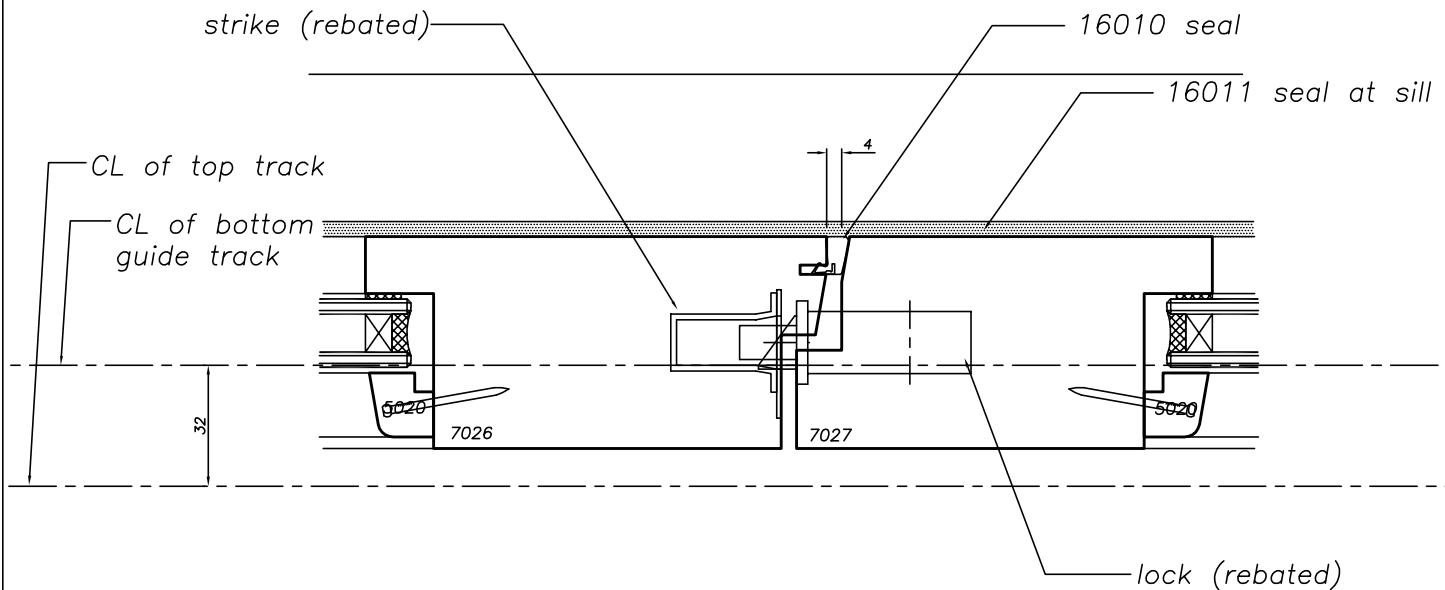
Fold type (6A) Free swinger closing to pair at top gear



No	Revision	Date	Detail No:
			6A
			Scale: 1:2 Date: 1/6/2012
			Drawing No: S7C-03-12

Cross Section Details

INSIDE



OUTSIDE

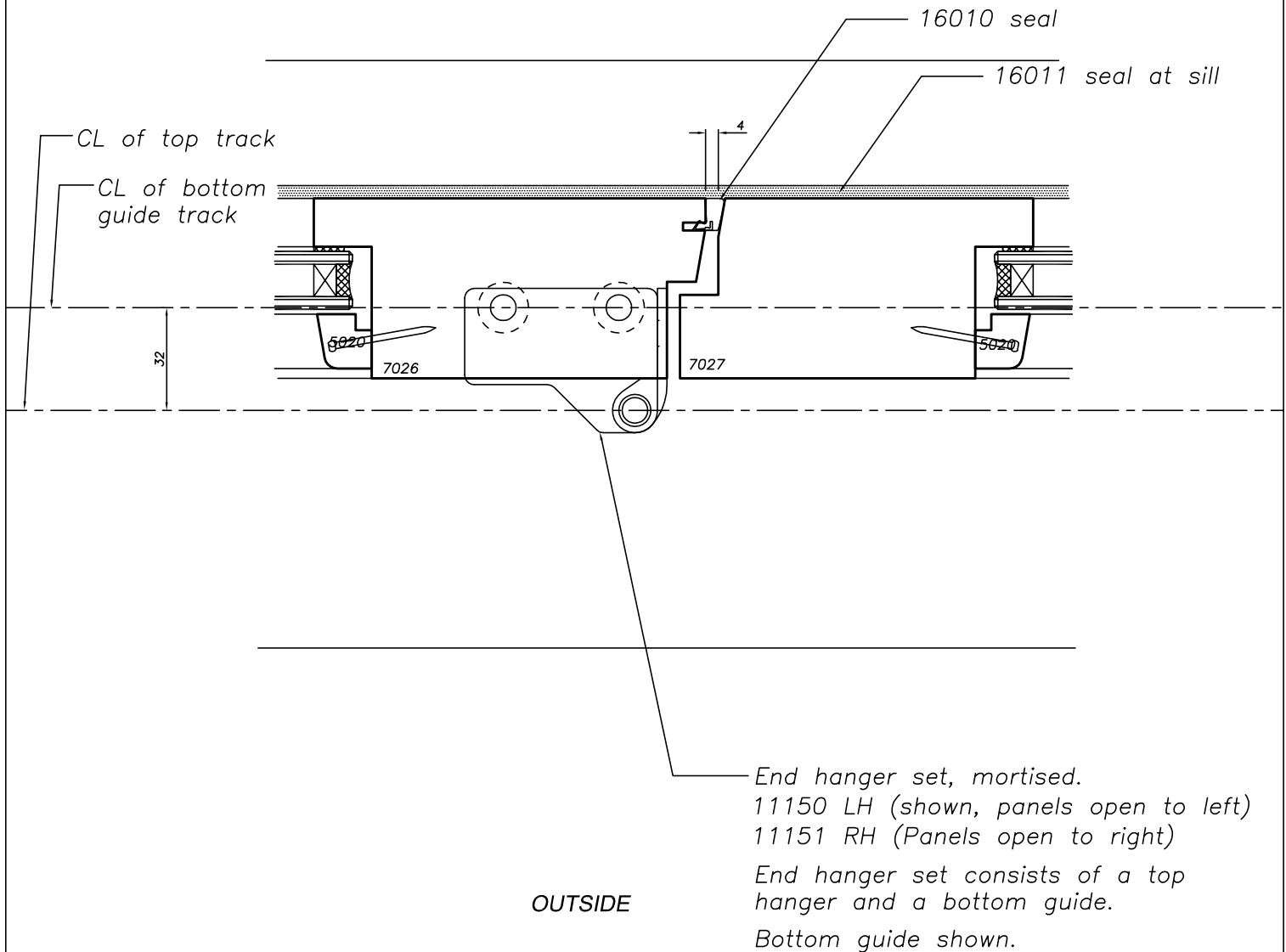
Fold type **6B** Free swinger closing to pair at lock



No	Revision	Date	Detail No:
			6B
			Scale: 1:2 Date: 1/6/2012
			Drawing No: S7C-03-13

Cross Section Details

INSIDE



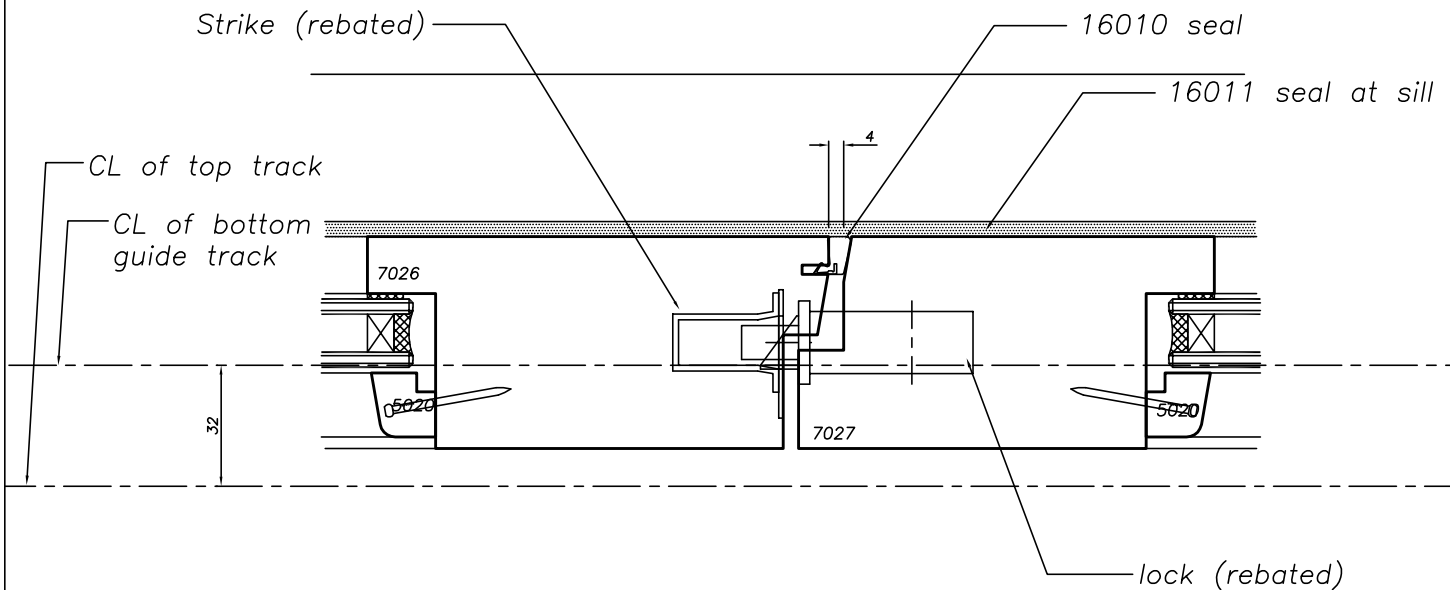
Fold type (6C) Free swinger closing to pair at lower gear



No	Revision	Date	Detail No:
			6C
			Scale: 1:2 Date: 1/6/2012
			Drawing No: S7C-03-14

Cross Section Details

INSIDE



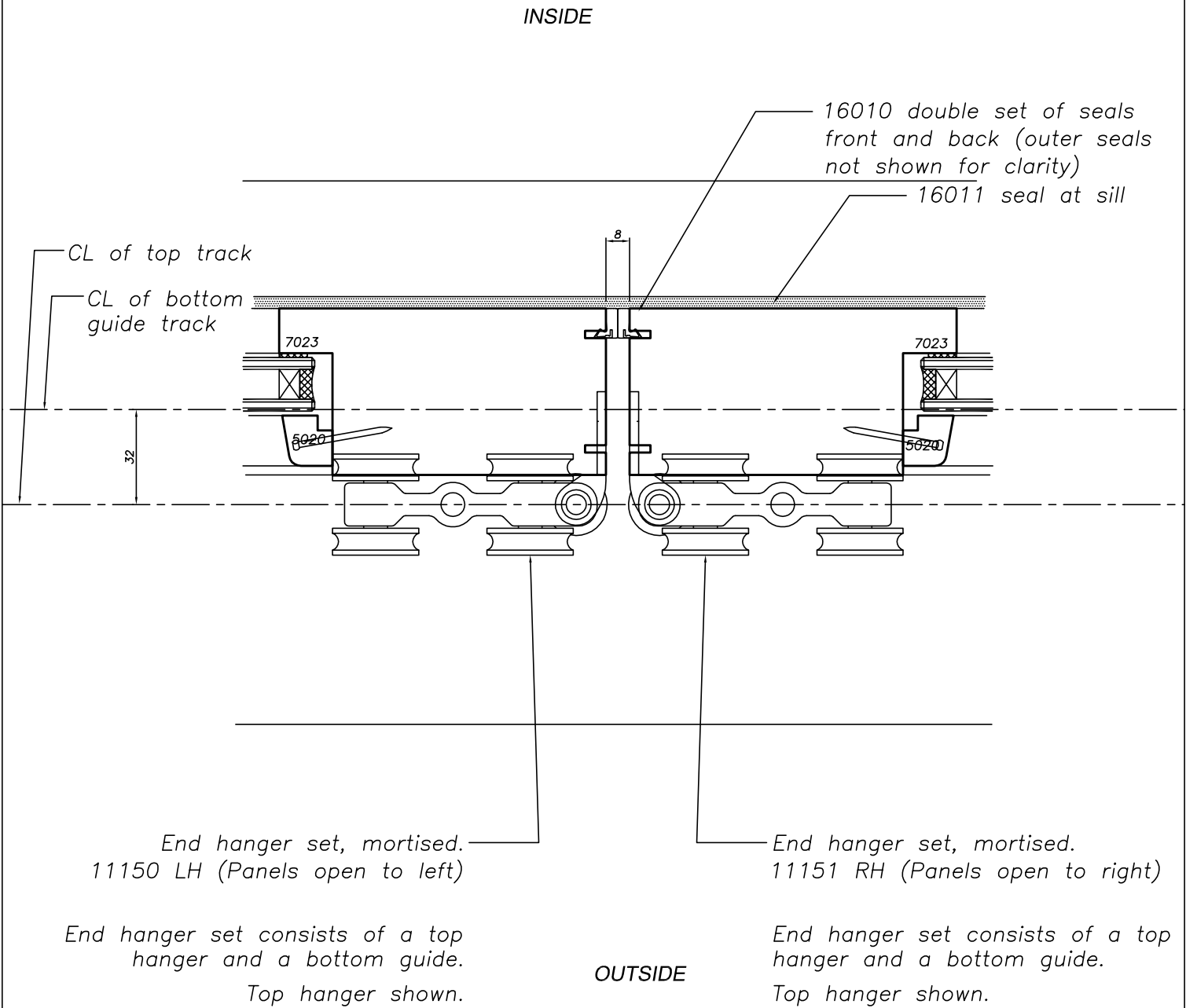
OUTSIDE

Fold type **7** French door set within unit



No	Revision	Date	Detail No:
			7
			Scale: 1:2 Date: 1/6/2012
			Drawing No: S7C-03-15

Cross Section Details



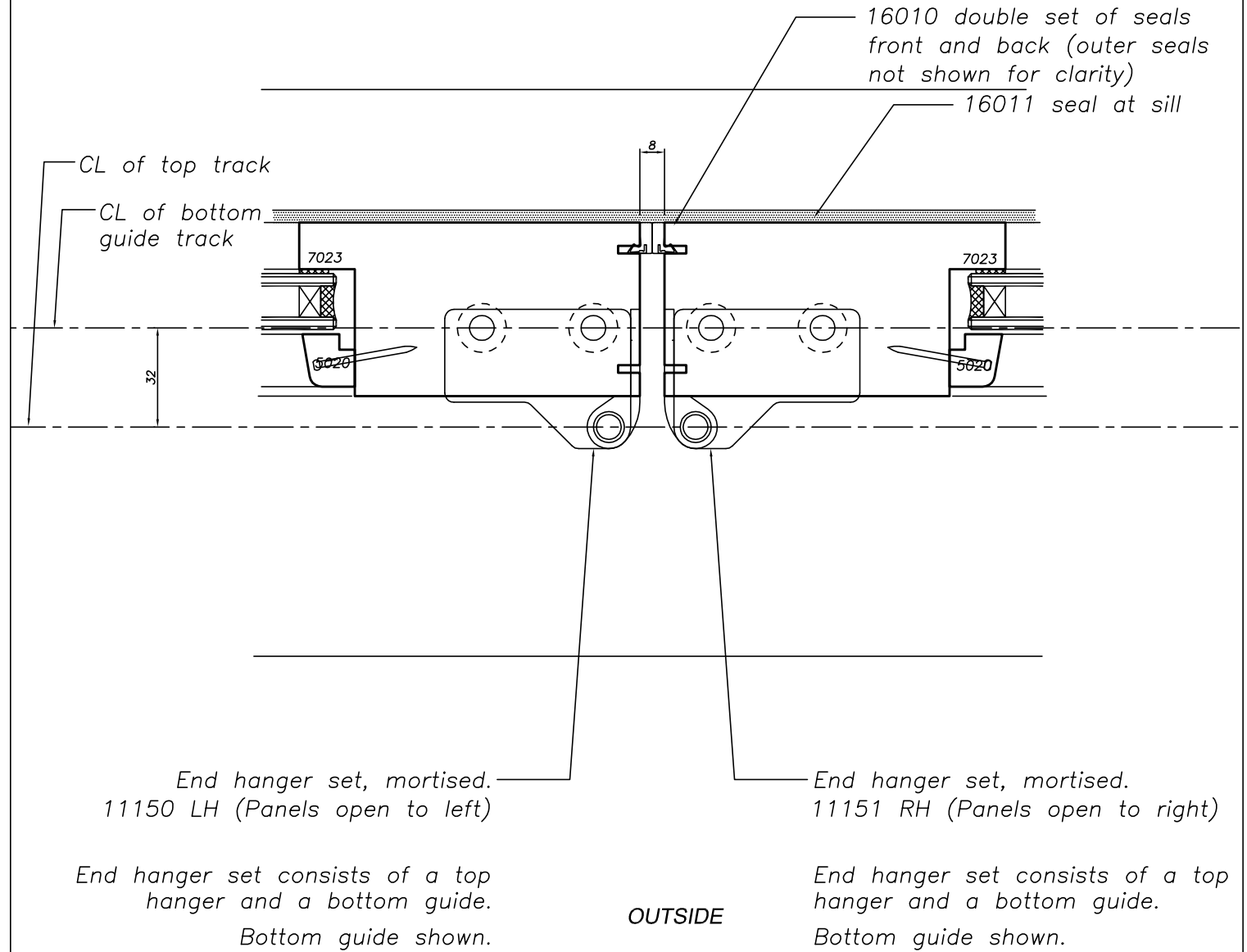
Fold type **8A** Two pairs meet, at top gear



No	Revision	Date	Detail No:
			8A
			Scale: 1:2 Date: 1/6/2012
			Drawing No: S7C-03-16

Cross Section Details

INSIDE

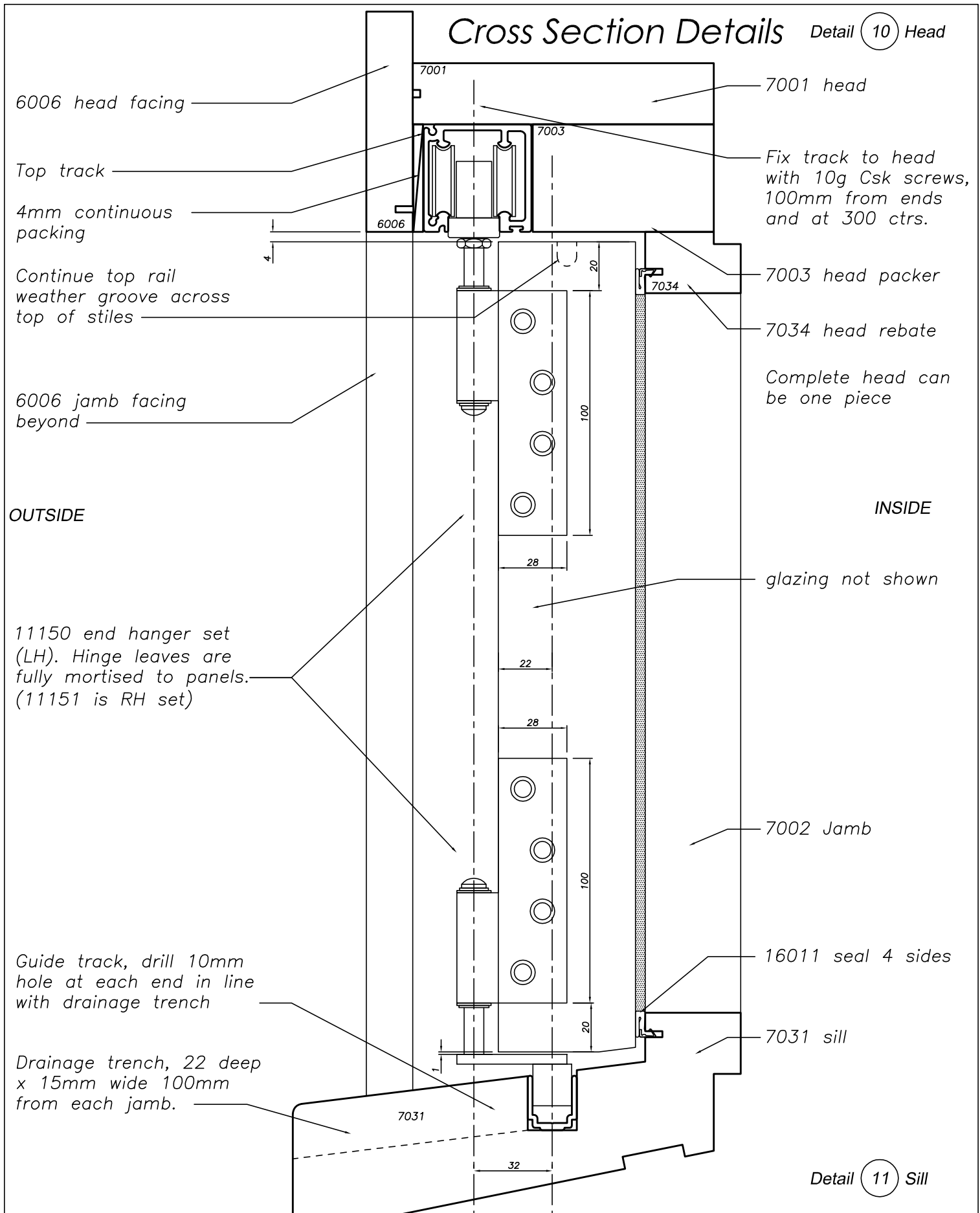


Fold type **8B** Two pairs meet, at bottom gear



No	Revision	Date	Detail No:
			8B
			Scale: 1:2 Date: 1/6/2012
			Drawing No: S7C-03-17

Cross Section Details Detail 10 Head



Detail 11 Sill



No	Revision	Date	Detail No:
			10 & 11
			Scale: 1:2 Date: 1/6/2012
			Drawing No: S7C-03-18

Cross Section Details

Detail (12) Head

6006 head facing

Top track

4mm continuous packing

Continue top rail weather groove across top of stiles

6006 jamb facing beyond

OUTSIDE

11140 mid hanger set. Non handed. Hinge leaves are fully mortised to each panel

Guide track, drill 10mm hole at each end in line with drainage trench

Drainage trench, 22 deep x 15mm wide 100mm from each jamb.

7001

7001 head

7003

Fix track to head with 10g Csk screws, 100mm from ends and at 300 ctrs.

6006

7034

7003 head packer

7034 head rebate

Complete head can be one piece

INSIDE

glazing not shown

7002 Jamb

16011 seal 4 sides

7031 sill

7031

Detail (13) Sill



No	Revision	Date

Detail No:	12 & 13
Scale: 1:2	Date: 1/6/2012
Drawing No:	S7C-03-19

Cross Section Details

Detail (14) Head

6006 head facing

Top track
4mm continuous
packing

Continue top rail
weather groove across
top of stiles

6006 jamb facing
beyond

OUTSIDE

11171 pivot set. RH
shown
Hinge leaves are fully
mortised to panel.
LH set is 11170

Bottom Pivot block
attached to sill channel
with M5 drilled and tapped
holes (see detail 1).
(Kit available 11199),
Seal fixings to channel.

Guide track, drill 10mm
hole at each end in line
with drainage trench

Drainage trench, 22 deep
x 15mm wide 100mm
from each jamb.

7001 head

Fix track to head
with 10g Csk screws,
100mm from ends
and at 300 ctrs.

7003 head packer

7034 head rebate

Complete head can
be one piece.

INSIDE

glazing not shown

7002 Jamb

16011 seal 4 sides

7031 sill

Detail (15) Sill



No	Revision	Date

Detail No:	14 & 15
Scale: 1:2	Date: 1/6/2012
Drawing No:	S7C-03-20

Cross Section Details

Detail (16) Head

6006 head facing

Top track

4mm continuous packing

Let 20mm rod guide plate into top of panel 3mm.

Continue top rail weather groove across top of stiles

6006 jamb facing beyond

OUTSIDE

Internal flushbolt or rod set gear.
Trench into edge of panel and backfill.

Let 16mm rod guide plate into bottom of panel 3mm.

Guide track, drill 10mm hole at each end in line with drainage trench

Drainage trench, 22 deep x 15mm wide 100mm from each jamb.

7001

7003

6006

7001 head

Fix track to head with 10g Csk screws, 100mm from ends and at 300 ctrs.

7003 head packer

7034 head rebate

Complete head can be one piece

INSIDE

glazing not shown

7002 Jamb

16011 seal 4 sides

7031 sill

7031

32

Detail (17) Sill



No Revision

Date

Detail No:

16 & 17

Scale: 1:2

Date: 1/6/2012

Drawing No:

S7C-03-21

Cross Section Details - Single Glazed

Detail (10) Head SG

6006 head facing

Top track

4mm continuous packing

Continue top rail weather groove across top of stiles

6006 jamb facing beyond

OUTSIDE

11150 end hanger set (LH). Hinge leaves are fully mortised to panels. (11151 is RH set)

Guide track, drill 10mm hole at each end in line with drainage trench

Drainage trench, 22 deep x 15mm wide 100mm from each jamb.

7011

7011 head

7013

Fix track to head with 10g Csk screws, 100mm from ends and at 300 ctrs.

6006

7034

7013 head packer

7034 head rebate

Complete head can be one piece

INSIDE

glazing not shown

7052 Jamb

16011 seal 4 sides

7051 sill

7051

32

Detail (11) Sill SG



No Revision

Date

Detail No:

10 & 11 SG

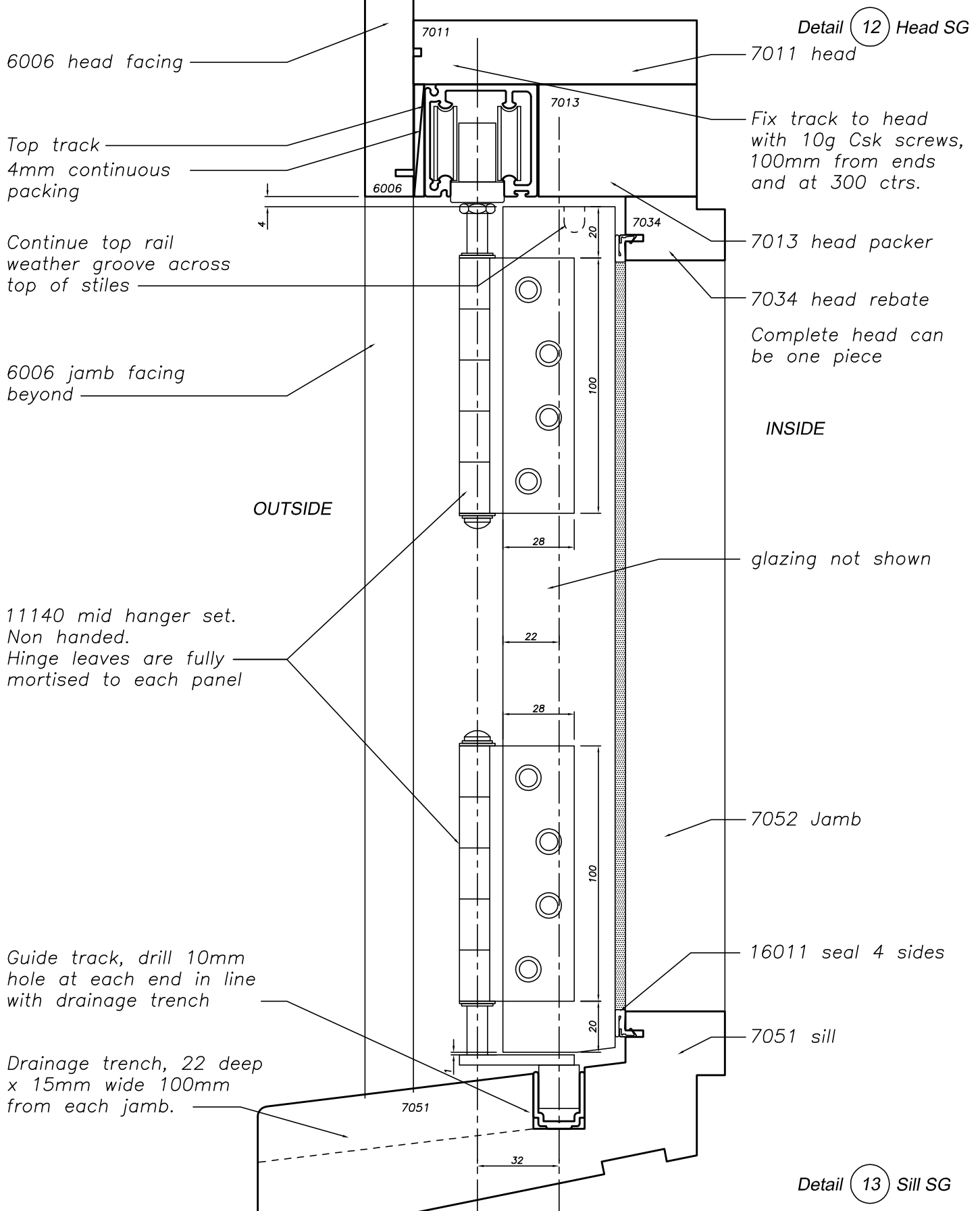
Scale: 1:2

Date: 1/6/2012

Drawing No:

S7C-03-22

Cross Section Details - Single Glazed



Cross Section Details - Single Glazed

Detail 14 Head SG

6006 head facing

7011 head

Top track

4mm continuous packing

Fix track to head with 10g Csk screws, 100mm from ends and at 300 ctrs.

Continue top rail weather groove across top of stiles

6006 jamb facing beyond

7013 head packer

7034 head rebate

Complete head can be one piece

INSIDE

OUTSIDE

11171 pivot set. RH shown
Hinge leaves are fully mortised to panel.
LH set is 11170

Bottom Pivot block attached to sill channel with M5 drilled and tapped holes (see detail 1).
(Kit available 11199),
Seal fixings to channel.

Guide track, drill 10mm hole at each end in line with drainage trench

Drainage trench, 22 deep x 15mm wide 100mm from each jamb.

glazing not shown

7052 Jamb

16011 seal 4 sides

7051 sill

Detail 15 Sill SG

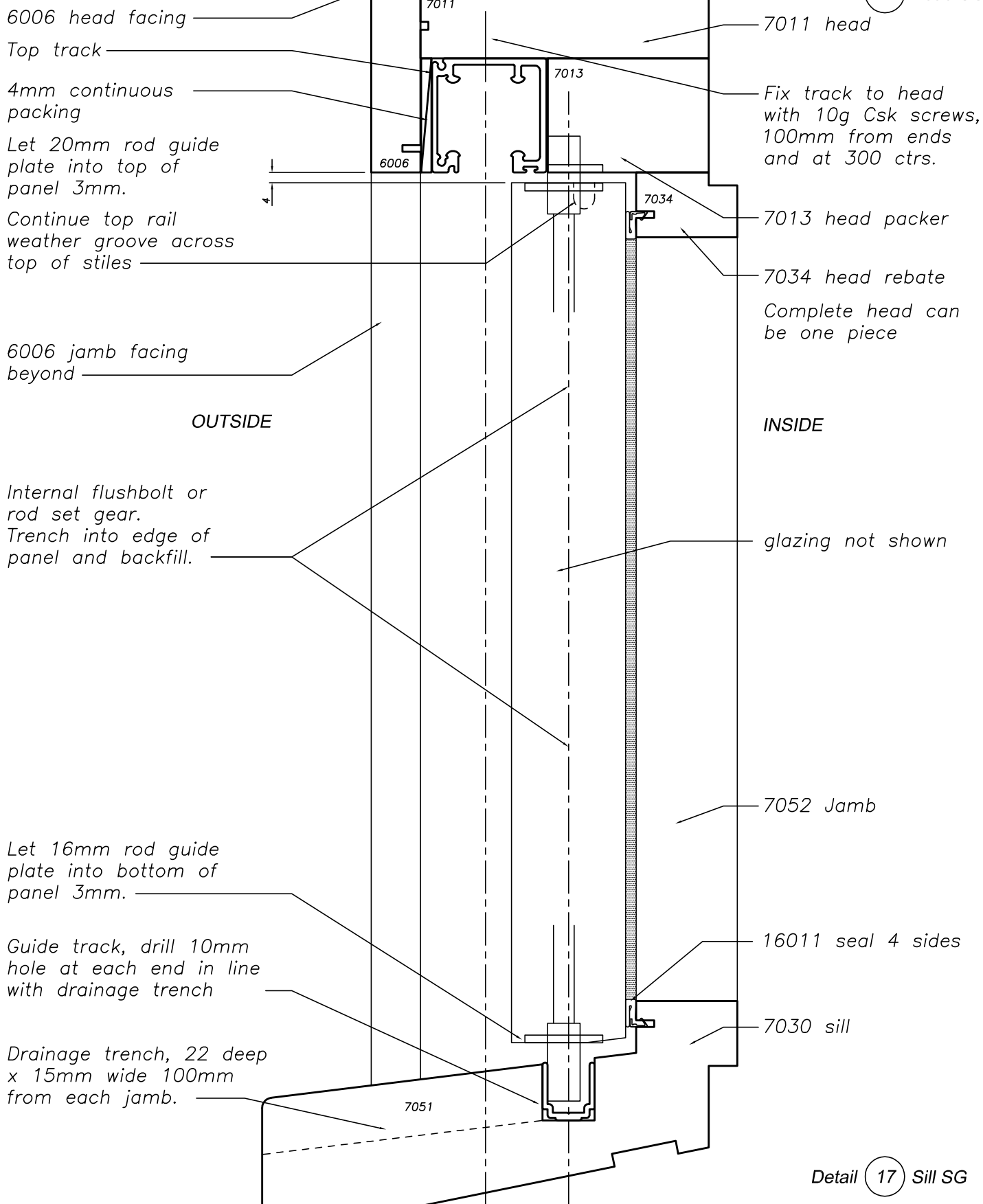


No	Revision	Date

Detail No:	14 & 15 SG
Scale: 1:2	Date: 1/6/2012
Drawing No:	S7C-03-24

Cross Section Details - Single Glazed

Detail 16 Head SG



Detail 17 Sill SG



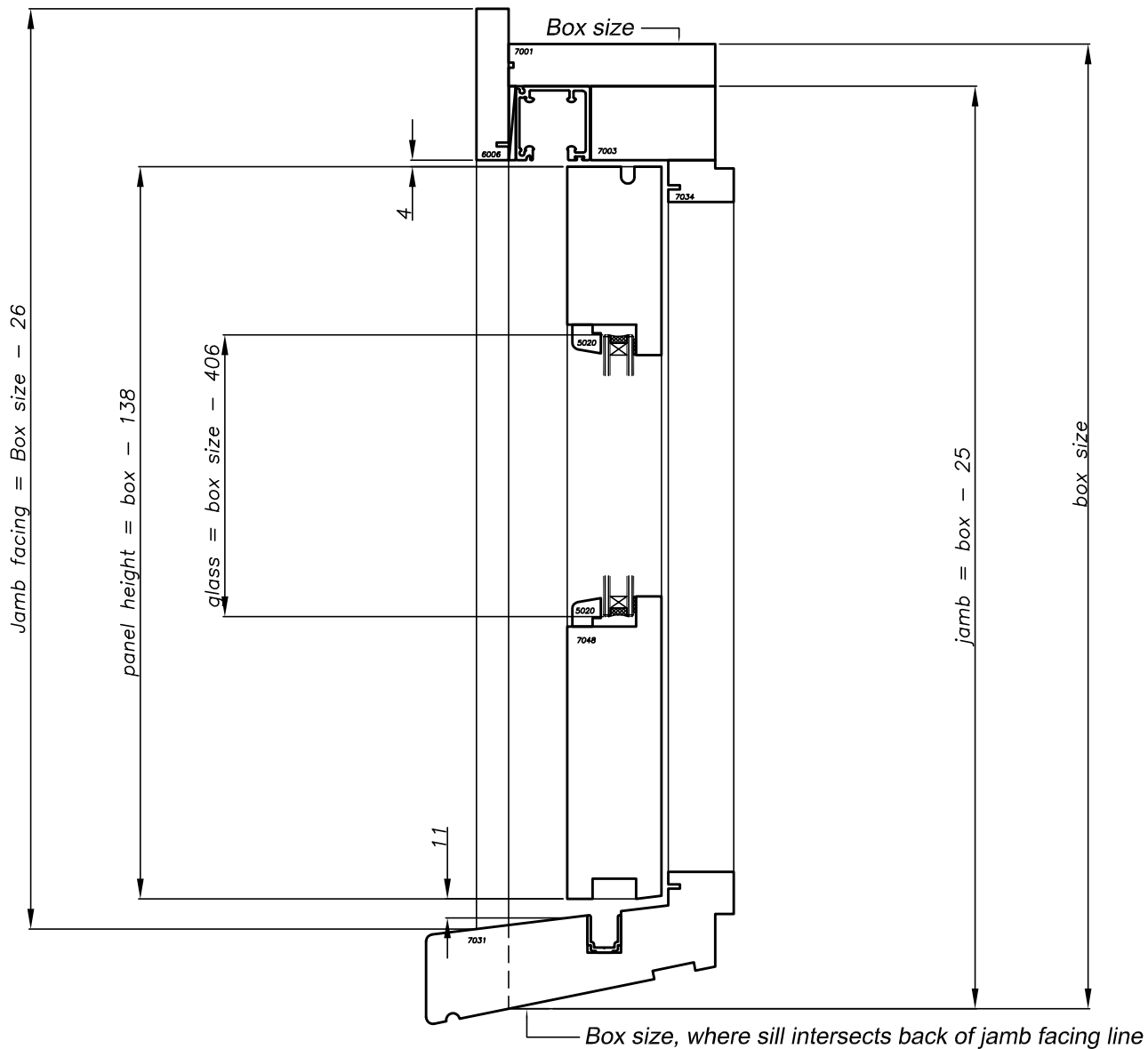
No	Revision	Date

Detail No: 16 & 17 SG

Scale: 1:2 Date: 1/6/2012

Drawing No: S7C-03-25

Deductions & Clearances



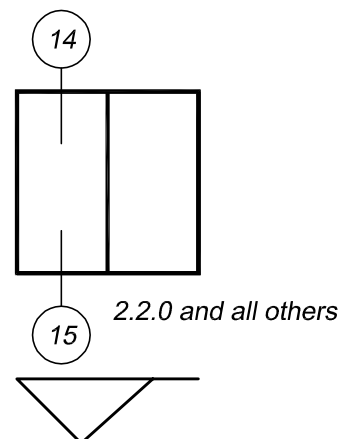
Notes;

Panel top and bottom clearances run at nominal 4 and 11mm.

Gear range adjustment is +/- 8mm

Other Deductions;

Single glazed 44mm panels and double glazed 56mm panels have the same deductions except for glass.

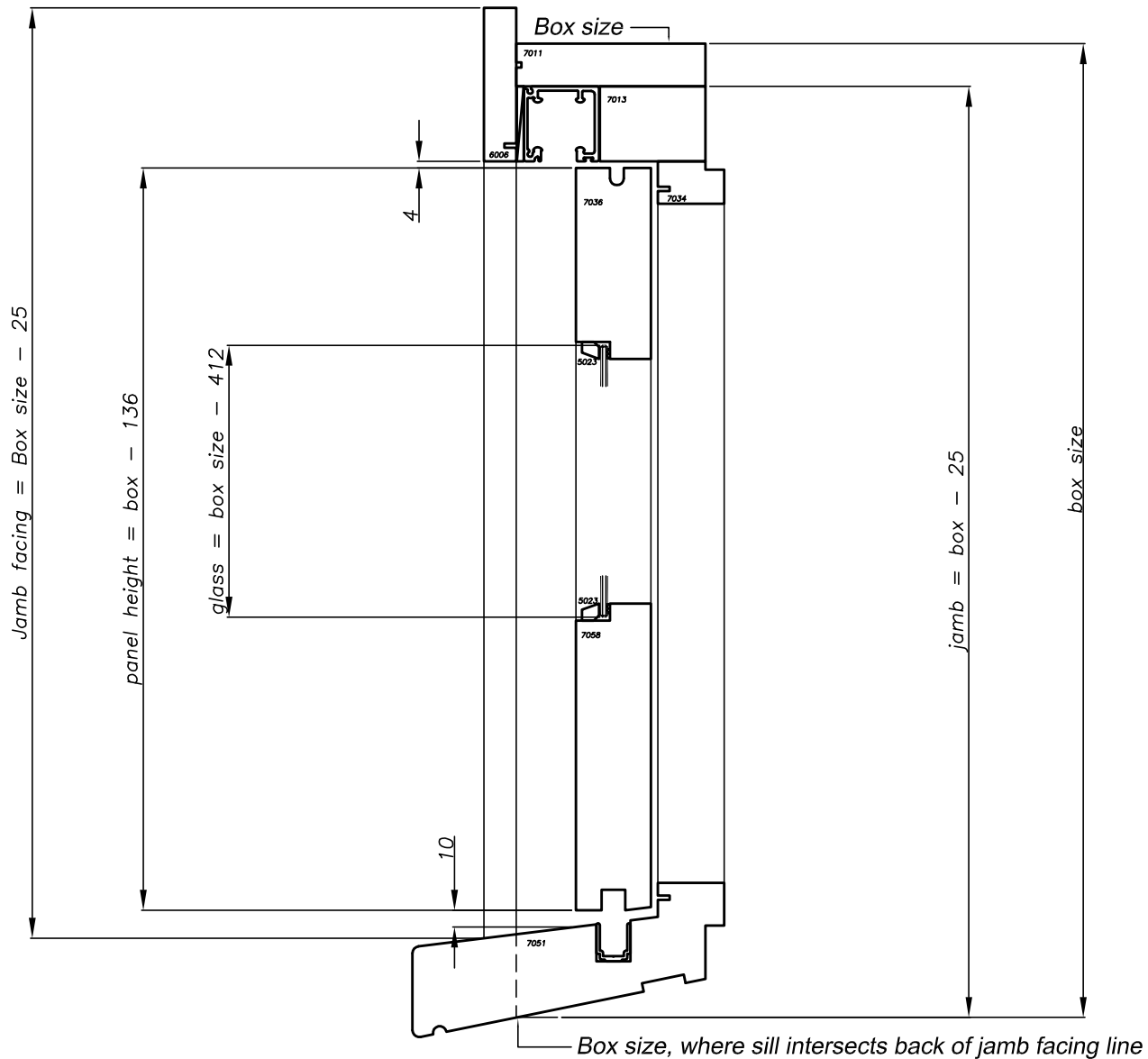


Vertical cutting data



No	Revision	Date	Detail No:
			Scale: 1:4 Date: 1/6/2012
			Drawing No: S7C-04-01

Deductions & Clearances



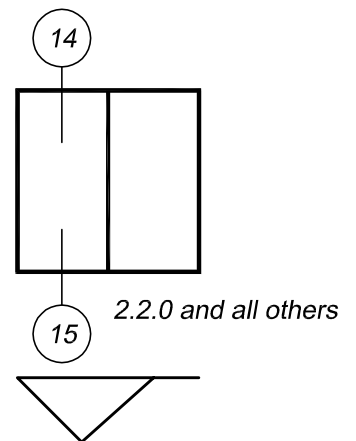
Notes;

Panel top and bottom clearances run at nominal 4 and 10mm. (DG is 11, a factor of the thicker panel on a sloping sill)
Gear range adjustment is +/- 8mm.

Other Deductions;

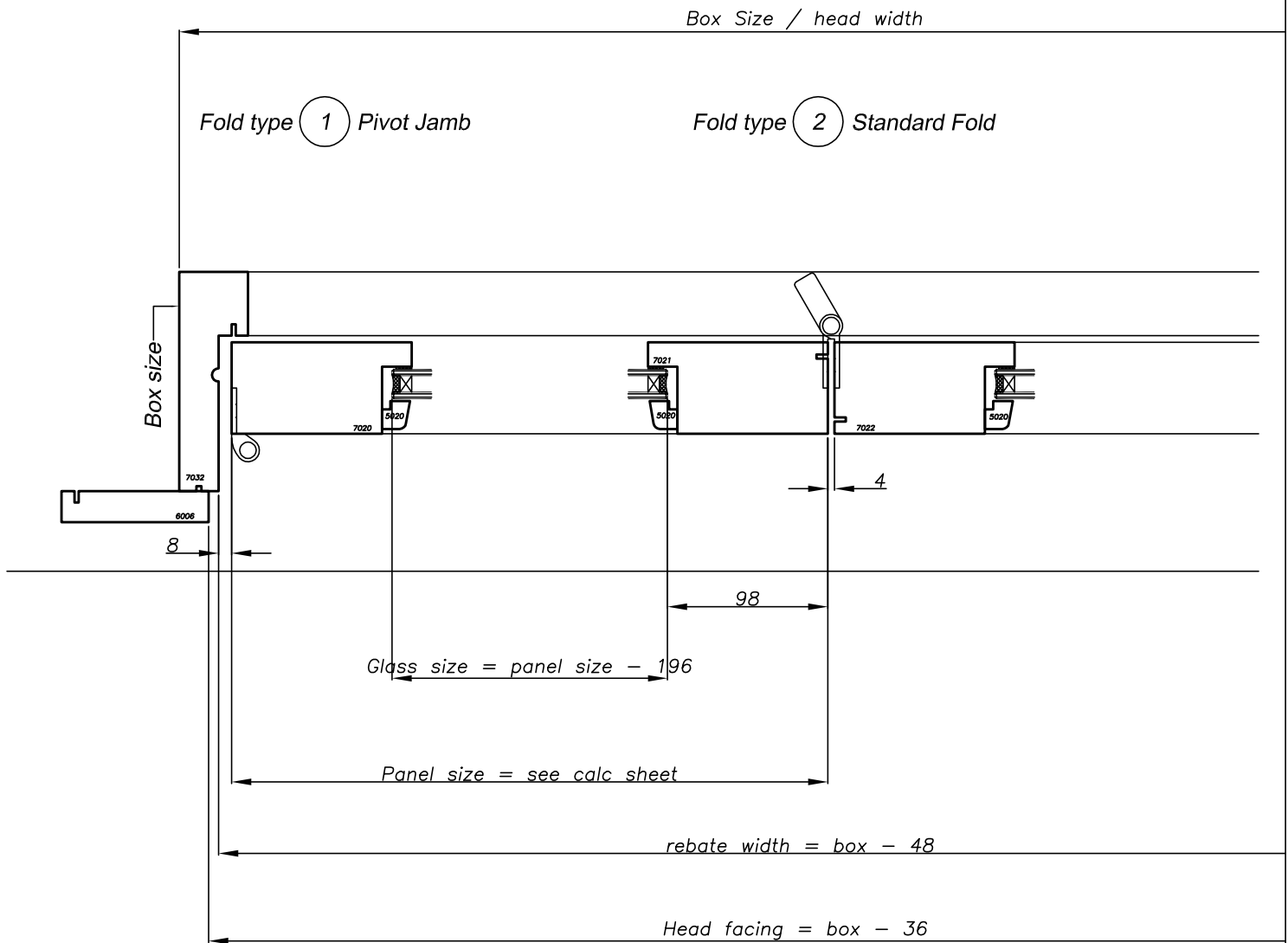
Single glazed 44mm and double glazed 56mm panels have the same horizontal deductions - except for glass.

Vertical cutting data, single glazed



No	Revision	Date	Detail No:
			Scale: 1:4 Date: 1/6/2012
			Drawing No: S7C-04-02

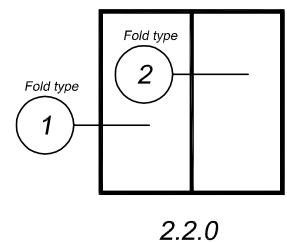
Deductions & Clearances



Notes;
Jamb to panel gap is 8mm for adjustable pivot gear to match opposite end.

Other Deductions;
11004 Head track = Box - 49
11003 sill guide channel = Box - 49

See Panel Calculation sheet for panel width calculations



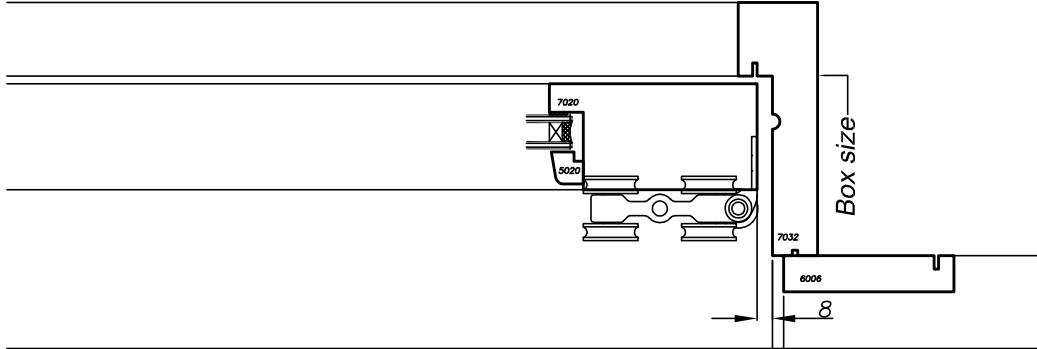
Horizontal cutting data

	No	Revision	Date	Detail No:
				Scale: 1:4 Date: 1/6/2012
				Drawing No: S7C-04-03

Deductions & Clearances

Box Size / head width

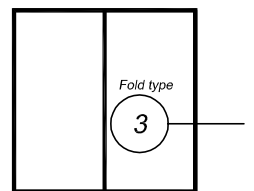
Fold type (3) pair closing to jamb



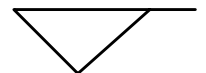
rebate width = box - 48

Head facing = box - 36

Notes;
Panel to Jamb gap is 8mm to allow for
toggle action of panels when opening



2.2.0



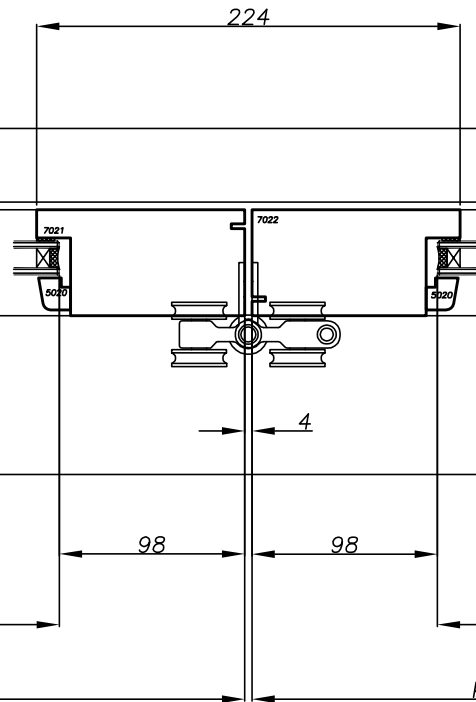
Horizontal cutting data



No	Revision	Date	Detail No:
			Scale: 1:4 Date: 1/6/2012
			Drawing No: S7C-04-04

Deductions & Clearances

Fold type (4) Back fold



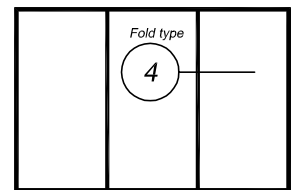
Glass = panel width - 196

Glass = panel width - 196

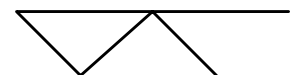
Panel width = see calc sheet

panel width = see calc sheet

Notes;



3.3.0



Horizontal cutting data



No	Revision	Date

Detail No:

Scale: 1:4

Date: 1/6/2012

Drawing No:

S7C-04-05

Deductions & Clearances

Box Size / head width

Fold type (5) Free swinger to jamb

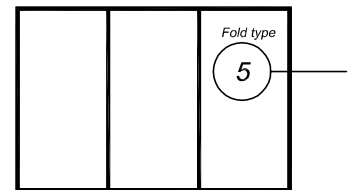
Glass = panel width - 196

rebate width = box - 48

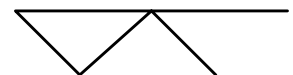
Head facing = box - 36

Notes;

Panel to jamb gap is 4mm for free swinger latching to jamb.
Use long tongue strike plate to prevent latch drag.



3.3.0



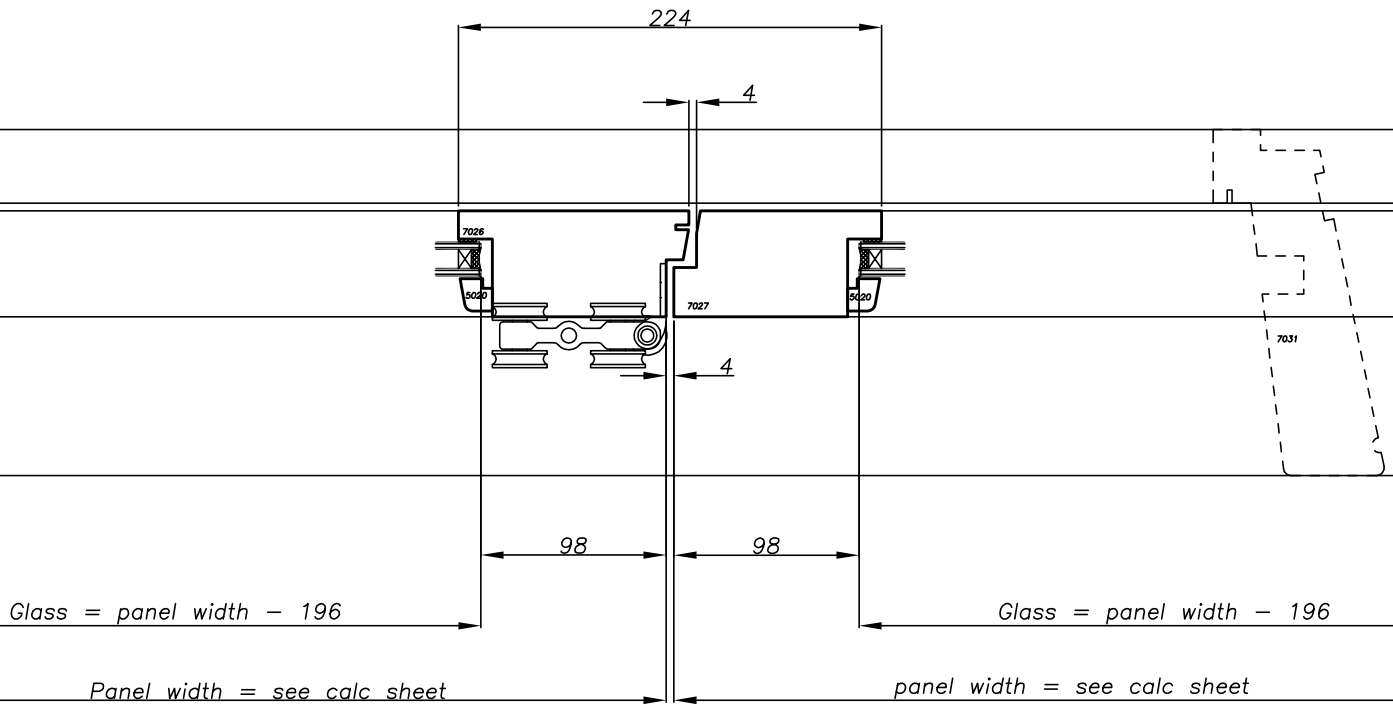
Horizontal cutting data



No	Revision	Date	Detail No:
			Scale: 1:4 Date: 1/6/2012
			Drawing No: S7C-04-06

Deductions & Clearances

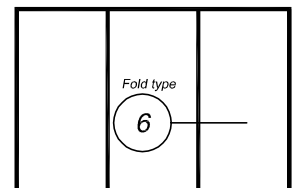
Fold type 6 Free swinger closing to pair



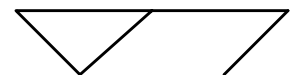
Notes;

Panel to panel gaps are 4mm

Panel width taken from outside face of rebated stiles as shown



3.2.1



Horizontal cutting data



No Revision

Date

Detail No:

Scale: 1:4

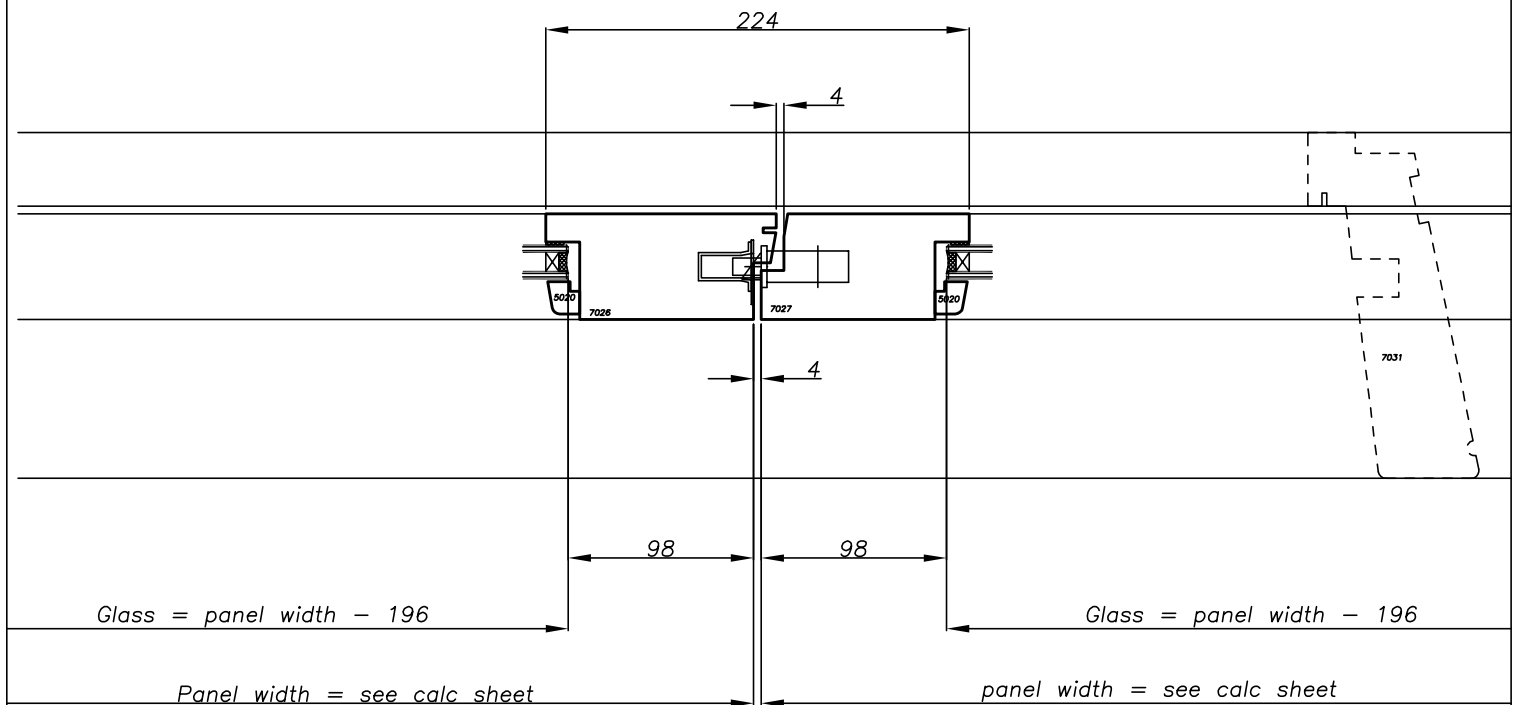
Date: 1/6/2012

Drawing No:

S7C-04-07

Deductions & Clearances

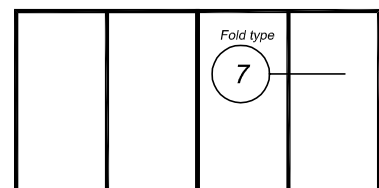
Fold type 7 French door set within unit



Notes;

Panel to panel gaps are 4mm.

Panel width taken from outside face of rebated stiles as shown



4.3.1



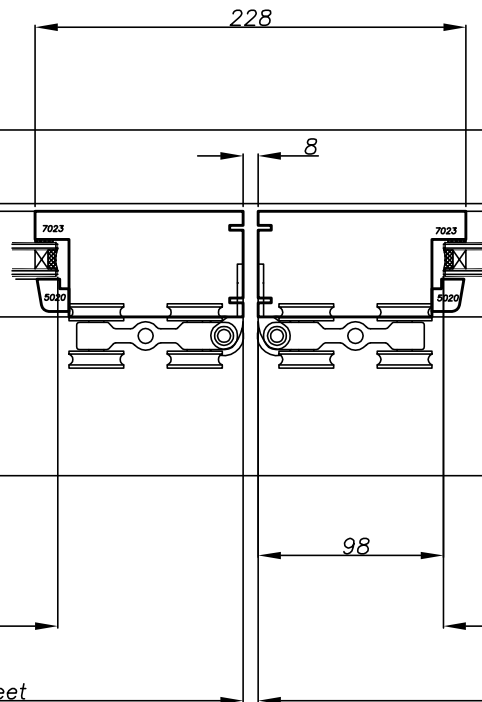
Horizontal cutting data



No	Revision	Date	Detail No:
			Scale: 1:4 Date: 1/6/2012
			Drawing No: S7C-04-08

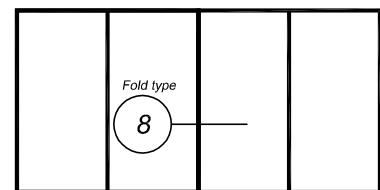
Deductions & Clearances

Fold type 8 Two pairs meet

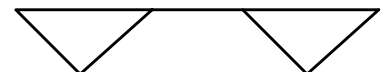


Notes;

Panel to panel gaps for meeting panel sets are 8mm to allow for toggle action of panels when finally closing.



4.2.2



Horizontal cutting data



No	Revision	Date	Detail No:
			Scale: 1:4 Date: 1/6/2012
			Drawing No: S7C-04-09

Configurations

Configuration Type:

5.4.1

Total number of panels

Panels hung from left

Panels hung from right

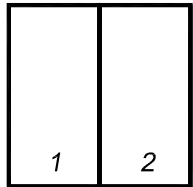
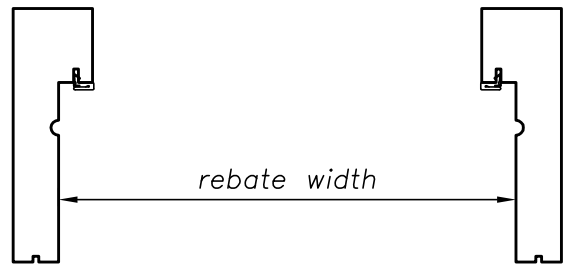
As viewed from outside

Opposite hand:

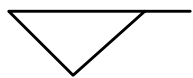
5.1.4

For opposite hand, panel numbers run right to left.

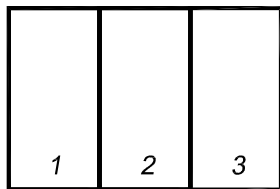
Panel deductions are calculated from rebate width (Jamb to Jamb).
These calcs are only for Dash Solutions outboard bifold gear.
www.dashsolutions.co.nz



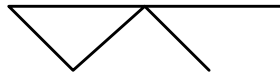
2.2.0



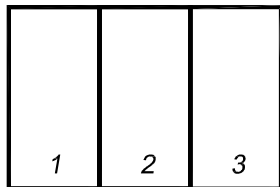
Panel 1 = Rebate width / 2 - 10
Panel 2 = Rebate width / 2 - 10



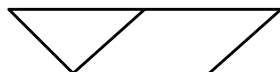
3.3.0



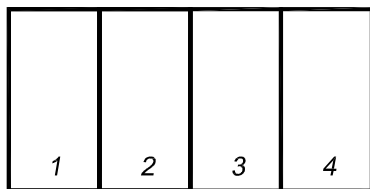
Panel 1 = Rebate width / 3 + 2
Panel 2 = Rebate width / 3 - 11
Panel 3 = Rebate width / 3 - 11



3.2.1



Panel 1 = Rebate width / 3 - 8
Panel 2 = Rebate width / 3 - 8
Panel 3 = Rebate width / 3 - 8



4.4.0



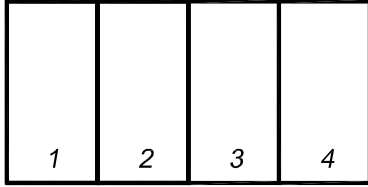
Panel 1 = Rebate width / 4 - 1
Panel 2 = Rebate width / 4 - 13
Panel 3 = Rebate width / 4 - 13
Panel 4 = Rebate width / 4 - 1

Panel calculation sheet

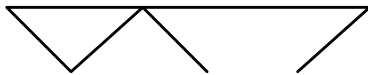


No	Revision	Date	Detail No:
			Scale: 1:1 Date: 1/6/2012
			Drawing No: S7C-05-01

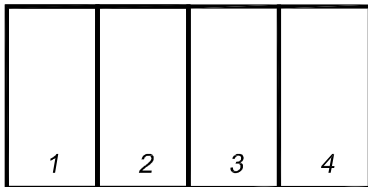
Configurations



4.3.1



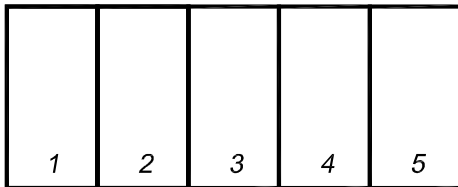
Panel 1 = Rebate width / 4 + 2
 Panel 2 = Rebate width / 4 - 10
 Panel 3 = Rebate width / 4 - 10
 Panel 4 = Rebate width / 4 - 10



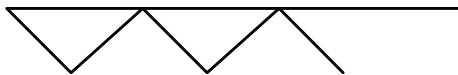
4.2.2



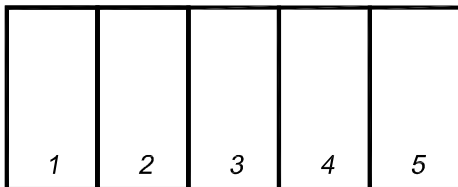
Panel 1 = Rebate width / 4 - 8
 Panel 2 = Rebate width / 4 - 8
 Panel 3 = Rebate width / 4 - 8
 Panel 4 = Rebate width / 4 - 8



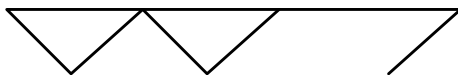
5.5.0



Panel 1 = Rebate width / 5 + 4
 Panel 2 = Rebate width / 5 - 8
 Panel 3 = Rebate width / 5 - 8
 Panel 4 = Rebate width / 5 - 8
 Panel 5 = Rebate width / 5 - 8



5.4.1



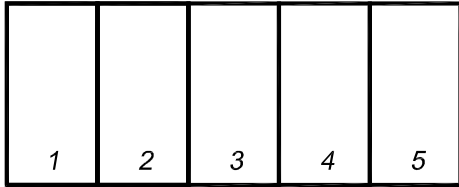
Panel 1 = Rebate width / 5 + 1
 Panel 2 = Rebate width / 5 - 11
 Panel 3 = Rebate width / 5 - 11
 Panel 4 = Rebate width / 5 + 1
 Panel 5 = Rebate width / 5 - 11

Panel calculation sheet

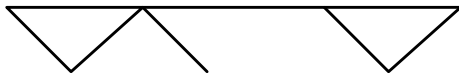


No	Revision	Date	Detail No:
			Scale: n.t.s Date: 1/6/2012
			Drawing No: S7C-05-02

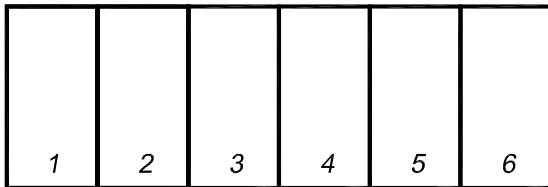
Configurations



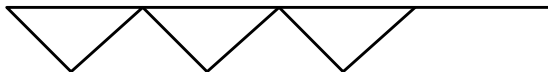
5.3.2



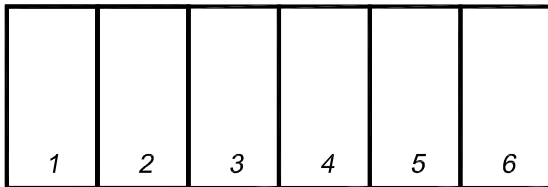
Panel 1 = Rebate width / 5 + 3
 Panel 2 = Rebate width / 5 - 9
 Panel 3 = Rebate width / 5 - 9
 Panel 4 = Rebate width / 5 - 9
 Panel 5 = Rebate width / 5 - 9



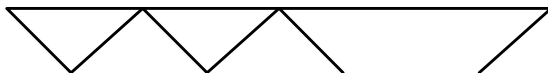
6.6.0



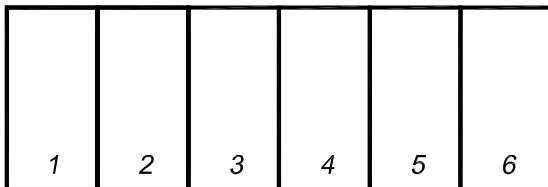
Panel 1 = Rebate width / 6 + 2
 Panel 2 = Rebate width / 6 - 10
 Panel 3 = Rebate width / 6 - 10
 Panel 4 = Rebate width / 6 - 10
 Panel 5 = Rebate width / 6 - 10
 Panel 6 = Rebate width / 6 + 2



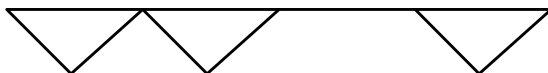
6.5.1



Panel 1 = Rebate width / 6 + 4
 Panel 2 = Rebate width / 6 - 8
 Panel 3 = Rebate width / 6 - 8
 Panel 4 = Rebate width / 6 - 8
 Panel 5 = Rebate width / 6 - 8
 Panel 6 = Rebate width / 6 - 8



6.4.2



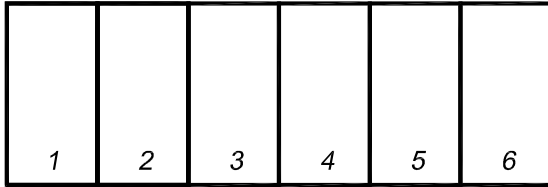
Panel 1 = Rebate width / 6 + 1
 Panel 2 = Rebate width / 6 - 11
 Panel 3 = Rebate width / 6 - 11
 Panel 4 = Rebate width / 6 + 1
 Panel 5 = Rebate width / 6 - 11
 Panel 6 = Rebate width / 6 - 11

Panel calculation sheet



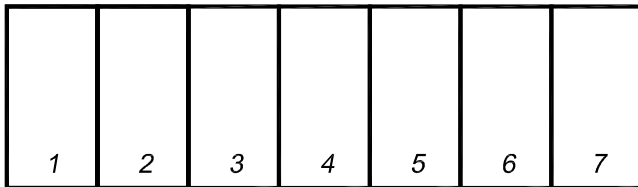
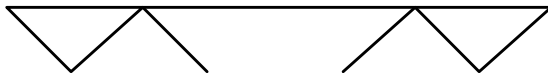
No	Revision	Date	Detail No:
			Scale: n.t.s Date: 1/6/2012
			Drawing No: S7C-05-03

Configurations



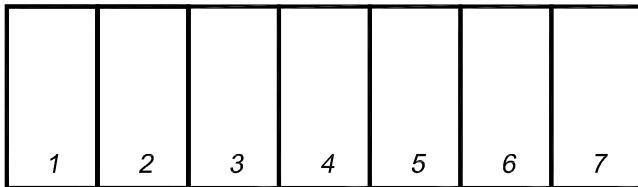
6.3.3

Panel 1 = Rebate width / 6 + 2
 Panel 2 = Rebate width / 6 - 10
 Panel 3 = Rebate width / 6 - 10
 Panel 4 = Rebate width / 6 - 10
 Panel 5 = Rebate width / 6 - 10
 Panel 6 = Rebate width / 6 + 2



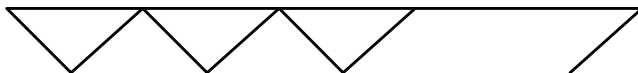
7.7.0

Panel 1 = Rebate width / 7 + 5
 Panel 2 = Rebate width / 7 - 7
 Panel 3 = Rebate width / 7 - 7
 Panel 4 = Rebate width / 7 - 7
 Panel 5 = Rebate width / 7 - 7
 Panel 6 = Rebate width / 7 - 7
 Panel 7 = Rebate width / 7 - 7



7.6.1

Panel 1 = Rebate width / 7 + 3
 Panel 2 = Rebate width / 7 - 9
 Panel 3 = Rebate width / 7 - 9
 Panel 4 = Rebate width / 7 - 9
 Panel 5 = Rebate width / 7 - 9
 Panel 6 = Rebate width / 7 + 3
 Panel 7 = Rebate width / 7 - 9



7.5.2

Panel 1 = Rebate width / 7 + 5
 Panel 2 = Rebate width / 7 - 7
 Panel 3 = Rebate width / 7 - 7
 Panel 4 = Rebate width / 7 - 7
 Panel 5 = Rebate width / 7 - 7
 Panel 6 = Rebate width / 7 - 7
 Panel 7 = Rebate width / 7 - 7

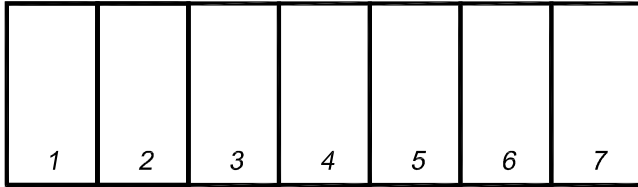


Panel calculation sheet

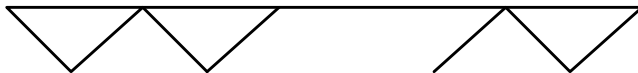


No	Revision	Date	Detail No:
			Scale: n.t.s Date: 1/6/2012
			Drawing No: S7C-05-04

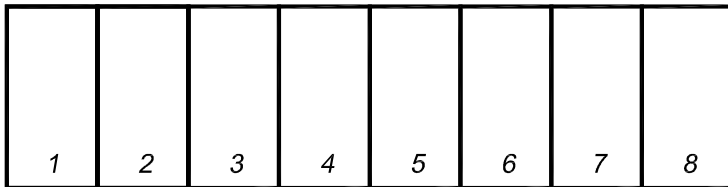
Configurations



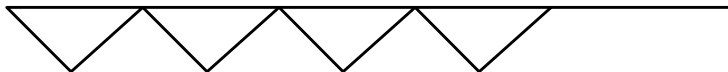
7.4.3



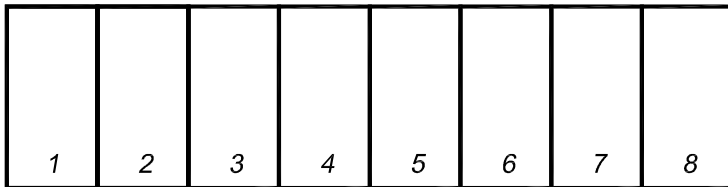
Panel 1 = Rebate width / 7 + 1
 Panel 2 = Rebate width / 7 - 11
 Panel 3 = Rebate width / 7 - 11
 Panel 4 = Rebate width / 7 + 1
 Panel 5 = Rebate width / 7 - 11
 Panel 6 = Rebate width / 7 - 11
 Panel 7 = Rebate width / 7 + 1



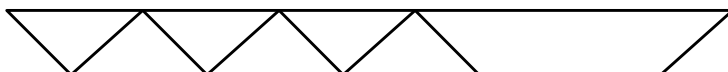
8.8.0



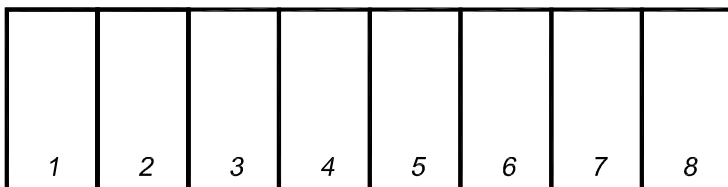
Panel 1 = Rebate width / 8 + 3
 Panel 2 = Rebate width / 8 - 9
 Panel 3 = Rebate width / 8 - 9
 Panel 4 = Rebate width / 8 - 9
 Panel 5 = Rebate width / 8 - 9
 Panel 6 = Rebate width / 8 - 9
 Panel 7 = Rebate width / 8 - 9
 Panel 8 = Rebate width / 8 + 3



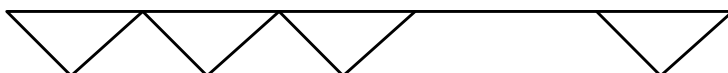
8.7.1



Panel 1 = Rebate width / 8 + 5
 Panel 2 = Rebate width / 8 - 7
 Panel 3 = Rebate width / 8 - 7
 Panel 4 = Rebate width / 8 - 7
 Panel 5 = Rebate width / 8 - 7
 Panel 6 = Rebate width / 8 - 7
 Panel 7 = Rebate width / 8 - 7
 Panel 8 = Rebate width / 8 - 7



8.6.2



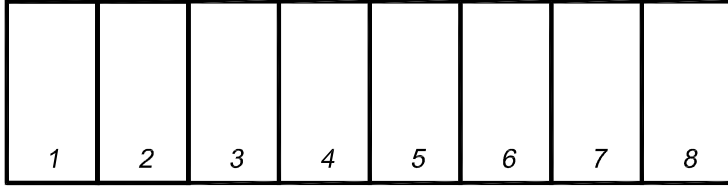
Panel 1 = Rebate width / 8 + 3
 Panel 2 = Rebate width / 8 - 9
 Panel 3 = Rebate width / 8 - 9
 Panel 4 = Rebate width / 8 - 9
 Panel 5 = Rebate width / 8 - 9
 Panel 6 = Rebate width / 8 - 9
 Panel 7 = Rebate width / 8 - 9
 Panel 8 = Rebate width / 8 - 9

Panel calculation sheet



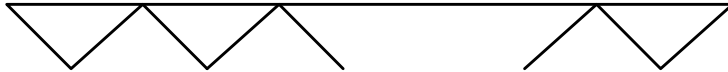
No	Revision	Date	Detail No:
			Scale: n.t.s Date: 1/6/2012
			Drawing No: S7C-05-05

Configurations



8.5.3

Panel 1 = Rebate width / 8 + 3
 Panel 2 = Rebate width / 8 - 9
 Panel 3 = Rebate width / 8 - 9
 Panel 4 = Rebate width / 8 - 9
 Panel 5 = Rebate width / 8 - 9
 Panel 6 = Rebate width / 8 - 9
 Panel 7 = Rebate width / 8 - 9
 Panel 8 = Rebate width / 8 + 3



8.4.4

Panel 1 = Rebate width / 8 + 0
 Panel 2 = Rebate width / 8 - 12
 Panel 3 = Rebate width / 8 - 12
 Panel 4 = Rebate width / 8 + 0
 Panel 5 = Rebate width / 8 + 0
 Panel 6 = Rebate width / 8 - 12
 Panel 7 = Rebate width / 8 - 12
 Panel 8 = Rebate width / 8 + 0

Panel calculation sheet



No	Revision	Date	Detail No:
			Scale: n.t.s Date: 1/6/2012
			Drawing No: S7C-05-06