

# Timspec Vertical Shiplap Rigid Air Barrier Weatherboard CertClad Cladding System

Product Technical Statement: 106964



Vertical timber cladding solution for buildings in NZ in wind zones up to and including Extra High.

[View miproducts listing](#)



## Level of assurance needed to demonstrate NZ Building Code Compliance

Supporting documentation should include technical information by manufacturer and either a BRANZ or independent Appraisal or CodeMark



Timspec confirms that this minimum level of assurance has been met or exceeded by the following:

CodeMark  
[CMA-CM40052](#)

## Technical Statement

### Scope of use

The Timspec CertClad Vertical Shiplap RAB cavity based weatherboard system has been developed for use on buildings in NZ and is considered an Alternative Solution within the scope of NZ building code Clause E2/AS1.

This system can be installed on buildings in NZ with a risk score of 0 - 20 (calculated in accordance with E2/AS1 Table 2) and wind zones up to and including Extra High.

### New Zealand Building Code (NZBC)

The product will, if employed in accordance with the supplier's installation and maintenance requirements, assist with meeting the following provisions of the building code:

- **Clause B1 Structure:** Performance B1.3.1, B1.3.2
- **Clause B2 Durability:** Performance B2.3.1(b)
- **Clause E2 External moisture:** Performance E2.3.2, E2.3.3, E2.3.5
- **Clause F2 Hazardous building materials:** Performance F2.3.1

### Supporting Evidence

The product has and can make available the following additional evidence to support the above statements:



CodeMark  
[CMA-CM40052](#)

## Product Criteria

### Design requirements

The Timspec CertClad Vertical Shiplap RAB Weatherboard system must be installed on buildings in NZ with a risk score of 0 - 20 calculated in accordance with E2/AS1 Table 2, and in wind zones up to and including Extra High.

### Installation requirements

The Timspec CertClad Vertical Shiplap RAB Weatherboard system must be installed in accordance with the Timspec installation manual.

Check [www.certclad.co.nz](http://www.certclad.co.nz) for latest version.

### Maintenance requirements

The Timspec CertClad Vertical Shiplap RAB Weatherboard system must be maintained in accordance with the Timspec installation manual guidelines.

Coatings and finishes must also be applied and maintained in accordance with the relevant coating manufacturer's specifications.

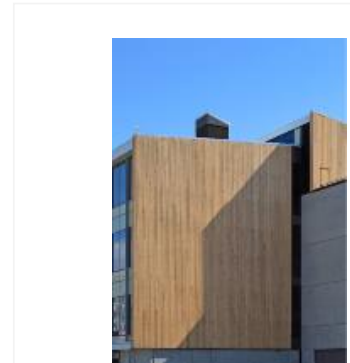
### Warrantees

Timspec Weatherboard systems must meet a minimum of 15 years durability as outlined in the New Zealand Standard 3602.

However where required Timspec can offer an extended warranty on a site specific basis.

## Company Product Information

### Environmental



**masterspec partner**

### Company Contact Details



Company: ITI NZ Limited  
Physical Address: Keeling Road  
Henderson  
AUCKLAND  
Postal Address: PO Box 27496  
Mt Roskill  
AUCKLAND  
Telephone: 64 09 6200260  
Fax: 64 09 6200261  
Email: [sales@iti.net.nz](mailto:sales@iti.net.nz)  
Website: [www.iti.net.nz](http://www.iti.net.nz)

# Timspec Vertical Shiplap Rigid Air Barrier Weatherboard CertClad Cladding System

Product Technical Statement: 106964



Timspec Accoya and Radiata Pine can be supplied with full FSC chain of custody certification, and Western Red Cedar can be supplied with Full PEFC chain of custody certification.



Date last validated: **02 December 2016**



Date last updated: **02 December 2016**

Disclaimer: The Product Technical Statement (PTS) template is copyright to Construction Information Limited. However the content of this PTS is the responsibility of the product manufacturer/supplier. Refer to the miproducts Terms and Conditions