

Contents classified

[View miproducts listing](#)



## Level of assurance needed to demonstrate NZ Building Code Compliance

Supporting documentation should include technical information by manufacturer and either a BRANZ or independent Appraisal or CodeMark



Attaché confirms that this minimum level of assurance has been met or exceeded by the following:

SCNZ-Structural Engineers New Zealand

[Producer Statement PS1](#)

## Technical Statement

### Scope of use

When privacy is important, the Cipher does the work. A clever option for intertenancy balcony screens with the option of a custom height. Also usable for concealing those balcony washing lines or heat pumps. A stylish design and incorporates well with the Ambassador is a mix of private and open styles are needed.

Multi-residential balconies, care homes, social housing.

Aluminium barriers should be designed in accordance with AS/NZS 1664.1:1997 or tested to comply with AS/NZS 1170.0:2002 Appendix B.

### New Zealand Building Code (NZBC)

The product will, if employed in accordance with the supplier's installation and maintenance requirements, assist with meeting the following provisions of the building code:

- **Clause B1 Structure:** Performance B1.3.4(a)
- **Clause B2 Durability:** Performance B2.3.1(a)
- **Clause F2 Hazardous building materials:** Performance F2.3.3(a), F2.3.3(b)
- **Clause F4 Safety from falling:** Performance F4.3.1, F4.3.2, F4.3.3, F4.3.4(a), F4.3.4(b), F4.3.4(c), F4.3.4(d), F4.3.4(e), F4.3.4(f), F4.3.4(g), F4.3.4(h), F4.3.5(a), F4.3.5(b)

### Notes

AS/NZS 1170:2002 NZS4223.3.2016 NZS3603 AS/NZS1664 AS/NZS2208

### Evidence

The product meets the requirements set out in the following documents, or relevant parts of cited standards within the documents:

Attaché Balustrades are designed and tested to the applicable NZBC. The available supporting documents for design and building consent applications are:

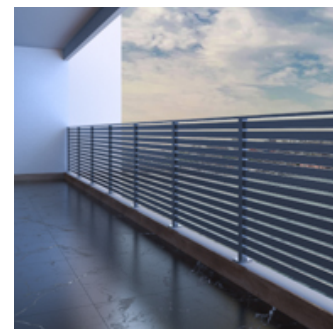
Structural Engineers New Zealand Producer Statement (PS1), design related span tables and fixing connection details.

### Supporting Evidence

The product has and can make available the following additional evidence to support the above statements:

SCNZ-Structural Engineers New Zealand

[Producer Statement PS1](#)



## masterspec partner

### Company Contact Details



Brand: Attaché

Company: Belcanto Group Limited

Physical: Auburn Street

Address: Avondale  
Auckland

Postal: Po Box 1136

Address: Levin

Email: [projects@belcanto.co.nz](mailto:projects@belcanto.co.nz)

Website: <http://www.attachebalustrades.co.nz>

## Product Criteria

### Design requirements

Refer to Attaché Balustrades specification and fabricators manual for design parameters. This specification details the documents the Attaché Balustrade System refers to in relation to the New Zealand Building Code, the manufacturer's documents, products used in the System, requirements in relation to fixing and surface finishing's

### Installation requirements

Installations must be in accordance with the manufacturer's and engineer's specifications. Consideration needs to be given to the durability and compatibility of materials in contact (barrier material, fixings and fixing substrate) prior to installation.

## Company Product Information

## Videos

[Attaché Cipher](#)



Date last validated: **07 October 2020**



Date last updated: **07 October 2020**

Disclaimer: The Product Technical Statement (PTS) template is copyright to Construction Information Limited. However the content of this PTS is the responsibility of the product manufacturer/supplier. Refer to the miproducts Terms and Conditions