

# CS FOR DOORS CS OvertakingDoors cavity slider

Product Technical Statement: 102299



2, 3, 4 or 5 stacking doors slide from a single cavity pocket

[View miproducts listing](#)



## Level of assurance needed to demonstrate NZ Building Code Compliance

Supporting documentation should include self-assessment and technical information by manufacturer



CS FOR DOORS confirms that this minimum level of assurance has been met or exceeded by the following:

BRANZ Appraisal

[900](#)

## Technical Statement

### Product Description

CS OvertakingDoors have an extra-thick cavity pocket, enabling a series of doors (up to five) to stack side-by-side inside the cavity pocket. These units make great room dividers, and because the width of the pocket can be minimised, the potential size of the door opening can be maximised.

140mm framing required (2 doors). Wider framing (50mm per extra door) is required for units with more than 2 doors

### Scope of use

CS OvertakingDoors Cavity Sliders are suitable for use with sliding doors in internal locations in residential or commercial buildings.

### New Zealand Building Code (NZBC)

The product will, if employed in accordance with the supplier's installation and maintenance requirements, assist with meeting the following provisions of the building code:

- **Clause B1 Structure:** Performance B1.3.1, B1.3.2, B1.3.3(a), B1.3.3(f), B1.3.3(h), B1.3.3(j), B1.3.4
- **Clause B2 Durability:** Performance B2.3.1, B2.3.1(a), B2.3.1(b), B2.3.1(c)
- **Clause F2 Hazardous building materials:** Performance F2.3.1

### Supporting Evidence

The product has and can make available the following additional evidence to support the above statements:



BRANZ Appraisal  
[900](#)

### Use in Service History

CS Cavity Sliders have been successfully used in commercial, residential and institutional projects in New Zealand and Australia since 1986. CS Cavity Sliders are backed by a 10 Year Written Guarantee.

## Product Criteria

### Design requirements

Refer to the CS OvertakingDoors brochure for design parameters. Units require a 140mm stud wall. Add 50mm per extra door.

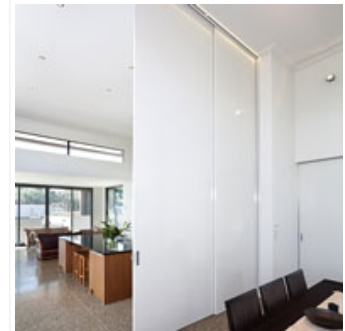
The use of aluminium CS DoorLeaves are recommended. Door carrying capacity is 120kg using standard 2-wheel carriages. 4-wheel carriages are supplied for heavier doors.

### Installation requirements

CS Cavity Sliders must be installed in accordance with the manufacturer's installation instructions. Lintels over the full trim size (opening and pocket) should be sized to ensure that no load is applied to the door assembly. Lintels to NZS3604 are acceptable for door weights up to 75kg per metre width of door. Specific design required when the door weight exceeds 75kg per metre. Track must be fitted level and straight and fixed at maximum 600mm centres to the lintel. Refer to CS FOR DOORS detailed instructions for preparation and finishing of the door opening and final door installation.

### Maintenance requirements

Refer to CS FOR DOORS detailed instructions on powder coated aluminium product maintenance. Under normal circumstances, CS Cavity Sliders require no maintenance. In high use situations, the carriages will eventually need replacing. Replacement carriages and instructions on replacement are available from Cavity Sliders Limited. Any service requirements should be referred to one of our four branches



**masterspec partner**

### Company Contact Details



**Cavity Sliders™**

Company: CS Cavity Sliders

Physical Address: 5-7 Rakino Way  
Mt Wellington  
AUCKLAND

Postal Address: PO Box 112349  
Penrose  
AUCKLAND

Telephone: 64 09 2760800

Fax: 64 09 2762525

Email: [info@cavitysliders.co.nz](mailto:info@cavitysliders.co.nz)

Website: [www.cavitysliders.com](http://www.cavitysliders.com)

# CS FOR DOORS CS OvertakingDoors cavity slider

Product Technical Statement: 102299



## Warrantees

10 year written guarantee on CS Cavity Sliders.

## Company Product Information

### Environmental

CS FOR DOORS operates a zero waste policy with all metal offcuts and waste recycled. Timber components are sourced from FCS certified suppliers.

### Relationships



New Zealand Made

### Videos

[CS OvertakingDoors](#)



Date last validated: **07 July 2020**



Date last updated: **07 July 2020**

Disclaimer: The Product Technical Statement (PTS) template is copyright to Construction Information Limited. However the content of this PTS is the responsibility of the product manufacturer/supplier. Refer to the miproducts Terms and Conditions