

Duffett C Series Clearline Roller Shutter Door



Product Technical Statement: 112394

High quality polycarbonate door system with a range of special functions and finishing options.

[View miproducts listing](#)



Level of assurance needed to demonstrate NZ Building Code Compliance

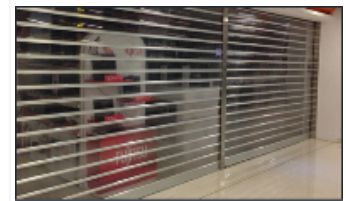
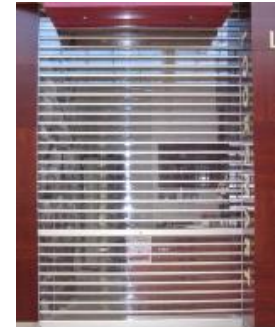
Supporting documentation should include technical information by manufacturer and either an independent assessment or reference to an industry-based scheme



Duffett confirms that this minimum level of assurance has been met or exceeded by the following:

Duffett Door Solutions

[Duffett Door Solutions](#)



Technical Statement

Product Description

Duffett C Series Clearline Roller Shutter Doors are construction from extruded aluminium and polycarbonate. These doors are designed for a high level of vision with maximum security. The door system is suitable for installation into timber, steel, concrete or masonry construction.

Features:

- Custom made to suit any opening size
- Available in a wide range of powdercoated colours
- Barrel manufactured from 150mm tube AS1074/BS1387
- Manual or motorised options available
- Can be manufactured from a small 1m width up to 10m wide, covering the vast majority of applications

The installation of the Roller Doors & Grilles has been inspected. Wind loadings for each door are to AS/NZS 1170.2.

Scope of use

Shopping Malls, Shops, Hotels, Bars, Arcades, Manufacturing Environments, Medical and Food Handling Areas.

New Zealand Building Code (NZBC)

The product will, if employed in accordance with the supplier's installation and maintenance requirements, assist with meeting the following provisions of the building code:

- **Clause B1 Structure:** Performance B1.3.1, B1.3.2, B1.3.3, B1.3.3(b), B1.3.3(f), B1.3.3(h), B1.3.3(i), B1.3.3(j), B1.3.3(p), B1.3.4
- **Clause B2 Durability:** Performance B2.3.1
- **Clause F2 Hazardous building materials:** Performance F2.3.1
- **Clause G9 Electricity:** Performance G9.3.1

Supporting Evidence

The product has and can make available the following additional evidence to support the above statements:

Duffett Door Solutions
[Duffett Door Solutions](#)

Product Criteria

Design requirements

Refer to the Duffett C Series Clearline Roller Shutter Door Specification for design parameters. Refer to our Windloading Chart for max windloading. Our Weight Chart is also available for door weights based on height and width. The Shutter & Grille Selection Chart provides a guideline for the maximum size criteria designated by motorisation type.

Installation requirements

Duffett C Series Clearline Roller Shutter Doors must be installed in accordance with the manufacturer's installation instructions. Building to be engineered and designed to comply with New Zealand Building Standards for the loads and fixings required for the specified door.

Maintenance requirements

The recommended maintenance frequency is regular door servicing every 12 months. For high frequency use, periodic maintenance should be carried out every 3 months. Under normal

masterspec partner

Company Contact Details



Company: Duffett Doors & Grilles Ltd
Physical Address: 15 Vogler Drive, Wiri, AUCKLAND
Postal Address: P.O. Box 23075, Hunters Corner, AUCKLAND
Telephone: 64 09 2787911
Fax: 64 09 2783190
Email: ashleigh.daly@duffett.co.nz
Website: www.duffett.co.nz

Duffett C Series Clearline Roller Shutter Door



Product Technical Statement: 112394

circumstances, a Duffett Service Agreement is suggested to maintain longer operational life.

Warrantees

Duffett offer a 24 month guarantee on new doors, provided the products are properly maintained in accordance with company maintenance instructions. The warranty may be voided if products are not operated in accordance with operating instructions.

Company Product Information

Environmental

Duffett Doors are committed to protecting the environment from any adverse effects from our operation & activities. We comply with all applicable environmental laws and regulations.

Relationships



New Zealand Made



Date last validated: **27 September 2022**



Date last updated: **27 September 2022**

Disclaimer: The Product Technical Statement (PTS) template is copyright to Construction Information Limited. However the content of this PTS is the responsibility of the product manufacturer/supplier. Refer to the miproducts Terms and Conditions