

The queen of our range, the fence panel that allow it to rake up to 30 deg.

[View miproducts listing](#)



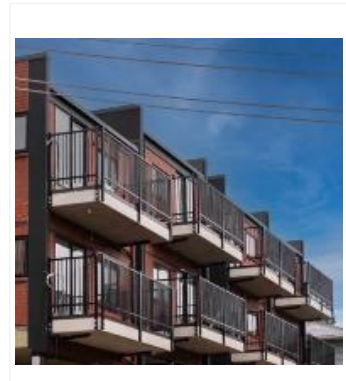
## Level of assurance needed to demonstrate NZ Building Code Compliance

Supporting documentation should include technical information by manufacturer and either a BRANZ or independent Appraisal or CodeMark



Edgesmith confirms that this minimum level of assurance has been met or exceeded by the following:

OBD Consultants  
[Tony O'Brien - 251875](#)



masterspec partner

## Technical Statement

### Product Description

The queen of our range, the aluminium fence panel range has concealed mechanics that allow it to rake up to 30 deg. Available in 1.2H, 1.5H and 1.8H flat top and 1.8H spike top.

1.2H panel is balustrade compliant in full length panels and is also pool compliant. Producer Statement available.

Available in Satin Black or can be powder coated in a wide range of Dulux colours.

Horizontal Rails : 40 x 40mm channel

Vertical Pickets : 25 x 25mm SHS

Standard Width : 2.325m

Material : Aluminium T6063-T5

Heights : 1.2H, 1.5H, 1.8H,

Height with spike 1.8H, 2.1H

Various gate options available to match The Mercury Panel that can be coupled with Europe's leading Automation Brand 'Roger Technologies'.

All supported by our limited warranty. Refer to web site for details.

### Scope of use

Features:

Rakes up to 30 deg.

Pool Fence Compliant

Balustrade Compliant

Applications:

Balustrade Fencing - 1.2m high flat top raking aluminium panel, 2.325m wide 2 rail panel with 25mm SHS pickets.

Compliant to NZS3604.

Commercial panel with 50x40 top rail and 65SHS steel posts for parks, schools, apartments and commercial applications.

Residential panel with 40x40 rails and 65SHS aluminium posts for single dwelling residential applications.

### New Zealand Building Code (NZBC)

The product will, if employed in accordance with the supplier's installation and maintenance requirements, assist with meeting the following provisions of the building code:

- **Clause B2 Durability:** Performance B2.3.1(b)
- **Clause F4 Safety from falling:** Performance F4.3.1, F4.3.4, F4.3.4(a), F4.3.4(b), F4.3.4(c), F4.3.4(d), F4.3.4(e), F4.3.4(f), F4.3.4(g), F4.3.4(h), F4.3.5, F4.3.5(a)

### Evidence

The product meets the requirements set out in the following documents, or relevant parts of cited standards within the documents:

Edgesmith PS1 for The Mercury Balustrade Panel is readily available on request or via the website.

### Supporting Evidence

#### Company Contact Details



Company: Edgesmith

Physical Address: 20 Anvil Road, Silverdale

Postal Address: PO Box 120 Silverdale Auckland

Telephone: 64 09 4274980

Email: [crew@edgesmith.co.nz](mailto:crew@edgesmith.co.nz)

Website: [www.edgesmith.co.nz](http://www.edgesmith.co.nz)

The product has and can make available the following additional evidence to support the above statements:

OBD Consultants  
[Tony O'Brien - 251875](#)

## Use in Service History

As a fence panel, The Mercury Balustrade panel has been used in the fencing industry for 5 years. Originally, it was a rigid panel called The Lennox Panel but then changed to The Mercury Panel which offered a modular design with a raking feature and became available with a PS1 to meet building codes for Safety from falling.

## Product Criteria

### Installation requirements

Refer to The Mercury Balustrade PS1 for installation requirements.

### Maintenance requirements

Maintenance is required to meet any warranty claims.

- Remove Sap from trees
- No contact with water with high mineral content
- No contact with landscape or gardening equipment
- No contact with chemicals that may cause damage
- Remove any attachment of foreign articles abrasive to the product
- Remove any plant life of any sort that has grown directly upon or in contact with any portion of the product
- Periodically washing your fence with water, paying attention to areas not rinsed/cleaned during rainfall
- Periodically check all fixing and replacing any that require it



Date last validated: **07 September 2023**



Date last updated: **07 September 2023**

Disclaimer: The Product Technical Statement (PTS) template is copyright to Construction Information Limited. However the content of this PTS is the responsibility of the product manufacturer/supplier. Refer to the miproducts Terms and Conditions