

Edgetec Infinity Frameless Glass Balustrade

Product Technical Statement: 106148



Edgetec Infinity is a cantilevered, channel face & top fix frameless glass balustrade system

[View miproducts listing](#)



Level of assurance needed to demonstrate NZ Building Code Compliance

Supporting documentation should include technical information by manufacturer and either a BRANZ or independent Appraisal or CodeMark



Edgetec confirms that this minimum level of assurance has been met or exceeded by the following:

Lautrec Technology Group Ltd

[Producer Statement \(PS1\)](#)

Technical Statement

Product Description

Edgetec Infinity Frameless Glass Balustrade is a cantilevered face fix or top fix system that offers a sleek, linear design for clear views.

Manufactured from architectural grade aluminium, the proprietary Infinity clamps fix the glass infill panels without the need to add holes to the glass. Using the patent pending technology of the Edgetec Mini Post, Infinity is adjustable, even if the deck moves after installation.

- Choice of 12 or 15mm toughened glass panels or 13.52 or 17.52mm Laminated Stiff Interlayer Glass (SentryGlas)
- Interlinking Top Rail for glass balustrade - NZS4223.3.2016 requirement
- 5 year Warranty
- Complies with NZS1170, NZBC Clause F9 & Section 162C of Building Act
- Suitable for Occupancy Types A, A Other, B, E, C3 Residential & C3 Commercial

Infinity balustrade clamps are set at regular centres, with alignment via a continuous back plate.

Finished with a matching, continuous linear front cover plate and powder coated in a choice of custom colours.

Scope of use

Edgetec Infinity Balustrade is suitable for internal or external settings, including: Domestic and Residential deck and balcony barriers, stairways, handrails, pool fencing and matching pool or stairway gates. Offices and work areas not included elsewhere including storage areas and Residential or Commercial area without obstacles for moving people and not susceptible to overcrowding. Edgetec Infinity Balustrade must only be installed in accordance with the Edgetec Infinity product manual. Any deviation from standard fabrication or installation must be accompanied by a site specific PS1.

New Zealand Building Code (NZBC)

The product will, if employed in accordance with the supplier's installation and maintenance requirements, assist with meeting the following provisions of the building code:

- **Clause B1 Structure:** Performance B1.3.4(a)
- **Clause B2 Durability:** Performance B2.3.1(a)
- **Clause F2 Hazardous building materials:** Performance F2.3.3(a), F2.3.3(b)
- **Clause F4 Safety from falling:** Performance F4.3.1, F4.3.2, F4.3.3, F4.3.4(a), F4.3.4(b), F4.3.4(c), F4.3.4(d), F4.3.4(e), F4.3.4(f), F4.3.4(g), F4.3.4(h), F4.3.5(a), F4.3.5(b)

Notes

AS/NZS 1170:2002

NZS 4223.3.2016

NZS 3603

AS/NZS 1664

AS/NZS 2208

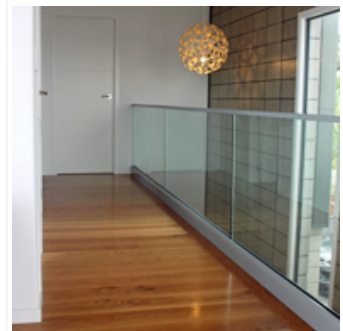
Supporting Evidence

The product has and can make available the following additional evidence to support the above statements:

Lautrec Technology Group Ltd

[Producer Statement \(PS1\)](#)

Product Criteria



masterspec partner

Company Contact Details



Company: Juralco
Physical Address: 48 Bruce McLaren Rd
Henderson
AUCKLAND
Postal Address: PO Box 21867
Henderson
AUCKLAND
Telephone: 64 09 4788018
Fax: 64 09 4787883
Email: specify@juralco.co.nz
Website: <http://juralco.co.nz/>

Edgetec Infinity Frameless Glass Balustrade

Product Technical Statement: 106148



Design requirements

Refer to Juralco Edgetec Infinity Balustrade specification and fabricators manual for design parameters and tables of maximum spans for wind zone up to and including Very High. This specification details the documents the Juralco Edgetec Infinity Balustrade System refers to in relation to the New Zealand Building Code, the manufacturer's documents, products used in the System, requirements in relation to fixing and surface finishings.

Installation requirements

Juralco Edgetec Infinity Balustrade must only be installed in accordance with the Juralco Edgetec Infinity Balustrade System manual. Any deviation from that specified in the Edgetec Infinity balustrade manual must only be in accordance with the site specific PS1, with site specific calculations and drawings listing the non standard details.

The Juralco Edgetec Infinity Balustrade System must only be fabricated/installed by a Juralco approved fabricator.

Warrantees

Juralco Edgetec Infinity balustrade is warranted for 5 years.

Dulux powder coating warranty is 10 years for Duralloy and 20 years for Duratec (surface integrity).

<https://www.juralcobalustrades.co.nz/warranty/>

Company Product Information

Relationships



New Zealand Made



Date last validated: **01 June 2023**



Date last updated: **01 June 2023**

Disclaimer: The Product Technical Statement (PTS) template is copyright to Construction Information Limited. However the content of this PTS is the responsibility of the product manufacturer/supplier. Refer to the miproducts Terms and Conditions