

A classic range of Standard and Rebated Bevel-Back profiled weatherboards.

[View miproducts listing](#)



## Level of assurance needed to demonstrate NZ Building Code Compliance

*Supporting documentation should include self-assessment and technical information by manufacturer*



JSC confirms that this minimum level of assurance has been met or exceeded by the following:

CodeMark

[GM-30082](#)

JSC

[CodeMark Certificate - GM-30082](#)

## Technical Statement

### Scope of use

This specification covers the use of the JSC Timber BevelClad Weatherboard System as an external horizontally fixed wall cladding system within the following scope

Location · In wind zones up to and including extra high, as defined in NZS3604:2011 or situated in specific design wind pressures up to a maximum design differential ultimate limit state (ULS) of 2.5 kPa, where the building has been specifically engineered

- In all corrosion zones, subject to use of fixing material as prescribed in NZS3604:2011 Building
- Scope limitations of NZBC E2/AS1, Third Edition amendment 8 (30,11/2017), Paragraph 1.1;
- New timber framed buildings with building wrap or rigid air barrier that comply with the NZ Building Code
- Existing timber framed buildings where the designer and installer have satisfied themselves that the existing building is suitable for the intended building work
- With a risk score of 0-20 as per NZBC E2/AS1 Table 2 situated in NZS 3604 Wind Zones
- Aluminium windows and doors joinery to comply with NZS4211-2008 – Specifications for performance windows
- Located more than 1m from relevant boundaries Note: Top vented cavities are okay to use

### New Zealand Building Code (NZBC)

The product will, if employed in accordance with the supplier's installation and maintenance requirements, assist with meeting the following provisions of the building code:

- **Clause B1 Structure:** Performance B1.3.1, B1.3.2, B1.3.3(a), B1.3.3(e), B1.3.3(f), B1.3.3(i), B1.3.3(j), B1.3.3(q), B1.3.4(a), B1.3.4(b), B1.3.4(c), B1.3.4(d), B1.3.4(e)
- **Clause B2 Durability:** Performance B2.3.1(b)
- **Clause E2 External moisture:** Performance E2.3.2, E2.3.3, E2.3.5, E2.3.7(b), E2.3.7(c)
- **Clause F2 Hazardous building materials:** Performance F2.3.1

### Notes

### Evidence

The product meets the requirements set out in the following documents, or relevant parts of cited standards within the documents:

E2/AS1

### Supporting Evidence

The product has and can make available the following additional evidence to support the above statements:



CodeMark

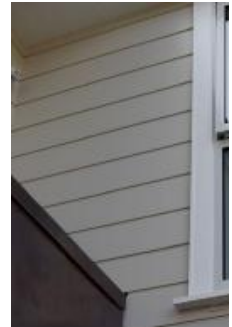
[GM-30082](#)

JSC

[CodeMark Certificate - GM-30082](#)

### Use in Service History

Where classic style meets unmatched durability! Bevel Back cladding is a classic style used across New Zealand's rural and urban landscapes, JSC Bevel Back weatherboards epitomize stability and durability, and are known for their bold shadow lines and solid aesthetic.



**masterspec partner**

### Company Contact Details



Company: JSC Ltd  
Physical Address: 20-22 Sawmill Road  
Riverhead  
AUCKLAND  
Postal Address: Sawmill Road, PO Box 285  
Riverhead, Kumeu  
AUCKLAND  
Telephone: 64 09 4122800  
Email: [TechHelp@jsc.co.nz](mailto:TechHelp@jsc.co.nz)  
Website: <http://www.jsc.co.nz>

## Product Criteria

### Design requirements

A full set of Technical drawings, Specification & Installation Guide and Installation Checklist are available for downloading.

This information must be followed. No product substitutions will be accepted under the JSC Producer Statement (PS1) - Design.

### Installation requirements

Drawing details, installation guide and Installation Checklist to be followed.

No product substitutions will be accepted under the JSC Producer Statement (PS1) - Design.

## Company Product Information

### Environmental

JSC is committed to implementing and maintaining the Forest Stewardship Council's Chain of Custody requirements for FSC® certified timber products.

In addition to the Forest Stewardship Council's Chain of Custody standard for certified timber, JSC purchases timber from suppliers who have established a clear track record in respect of environmental standards and conformance, with responsible legal and social principles. As such, JSC is a foundation member of the New Zealand Imported Tropical Timber Group (NZITTG) and will conform to the Charter of Understanding 2007.

JSC undertakes to review suppliers and procedures periodically to ensure compliance with industry best practice and up-to-date standards.

### Relationships



New Zealand Made



Date last validated: **27 September 2023**



Date last updated: **27 September 2023**

Disclaimer: The Product Technical Statement (PTS) template is copyright to Construction Information Limited. However the content of this PTS is the responsibility of the product manufacturer/supplier. Refer to the miproducts Terms and Conditions