

A range of pre-finished panels and jointing options.

[View miproducts listing](#)



Level of assurance needed to demonstrate NZ Building Code Compliance

Supporting documentation should include technical information by manufacturer and either a BRANZ or independent Appraisal or CodeMark



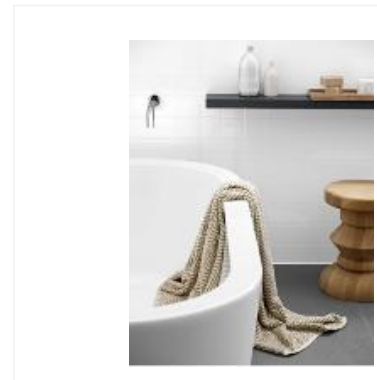
Laminex confirms that this minimum level of assurance has been met or exceeded by the following:

BRANZ Appraisal

[790](#)

BRANZ

[Seratone Aqua Fire Test Report - FH 5028](#)



masterspec partner

Company Contact Details

seratone

Brand:	Laminex
Company:	Laminex New Zealand
Physical Address:	810 Great South Road Penrose AUCKLAND
Postal Address:	PO Box 12270 Penrose AUCKLAND
Telephone:	64 09 5714444
Email:	info@laminex.co.nz
Website:	https://www.laminex.co.nz/about-laminex/brands/seratone

Technical Statement

Product Description

Seratone is a wet area wall panel that is aesthetically pleasing and immensely practical in many applications. Suitable in commercial and residential applications.

Scope of use

The Seratone range contains 3 sub ranges.

Seratone Aqua is a compact panel suitable for interior wet and dry applications like bathroom and shower recess paneling, kitchen splash backs and laundry walls. Available in 2.7mm and 4.5mm thick panels

Seratone Classic is a pre finished wall panel, manufactured on light weight, high density fibreboard. Seratone classic utilizes a 140 micron multi-layered paint system which is fully cured using UV light. An antimicrobial additive in the UV clear coat protects against microbial activity.

Seratone Specialty utilizes a 220 micron multi-layered paint system, which is fully cured using a UV light. Seratone Specialty also contains the antimicrobial additive.

All Seratone panels have colour matched aluminium jointers available.

New Zealand Building Code (NZBC)

The product will, if employed in accordance with the supplier's installation and maintenance requirements, assist with meeting the following provisions of the building code:

- **Clause B2 Durability:** Performance B2.3.1(b)
- **Clause C3 Fire affecting areas beyond the fire source:** Performance C3.4(a)
- **Clause E3 Internal moisture:** Performance E3.3.4

Notes

When stored, handled, installed and maintained in accordance with the Seratone Technical Information Document, Seratone will meet the durability requirements of the New Zealand Building Code (NZBC) B2/AS1 and has a serviceable life of at least 15 years. Please see laminex.co.nz for further information.

Evidence

The product meets the requirements set out in the following documents, or relevant parts of cited standards within the documents:

When stored, handled, installed and maintained in accordance with the Seratone Technical Information Document, Seratone will meet the durability requirements of the New Zealand Building Code (NZBC) B2/AS1 and has a serviceable life of at least 15 years. Please see laminex.co.nz for further information.

Cone Calorimeter test in accordance with ISO5660 and New Zealand Building Code Verification Method C/VM2 Appendix A. Result for Seratone - Group 3. FH 5028

Supporting Evidence

The product has and can make available the following additional evidence to support the above statements:



BRANZ Appraisal

[790](#)

BRANZ

[Seratone Aqua Fire Test Report - FH 5028](#)

Product Criteria

Design requirements

Seratone is perfect for use as wall paneling, feature walls, partitioning, bathroom and shower recess paneling and laundry walls. Seratone is available in a selection of contemporary colours and finishes with colour matched aluminium jointers, designed to stylishly integrate joins and minimise areas where mould and grime could gather.

Installation requirements

Please refer to the installation instructions contained within the [Seratone Technical manual](#)

Maintenance requirements

When stored, handled, installed and maintained in accordance with the Seratone Technical Information Document, Seratone will meet the durability requirements of the New Zealand Building Code (NZBC) B2/AS1 and has a serviceable life of at least 15 years.

Company Product Information

Relationships



Member of New Zealand Green Building Council

Videos

[Seratone Installation Video](#)



Date last validated: **22 July 2020**



Date last updated: **22 July 2020**

Disclaimer: The Product Technical Statement (PTS) template is copyright to Construction Information Limited. However the content of this PTS is the responsibility of the product manufacturer/supplier. Refer to the miproducts Terms and Conditions