

Legacy is a concealed clip fixed trough section roof and wall cladding, with a rib height of 50mm.

[View miproducts listing](#)



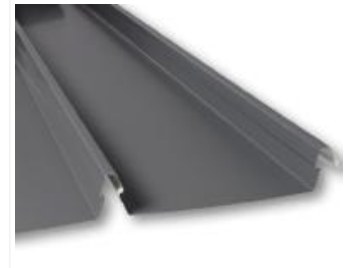
Level of assurance needed to demonstrate NZ Building Code Compliance

Supporting documentation should include technical information by manufacturer and either an independent assessment or reference to an industry-based scheme



Steel & Tube confirms that this minimum level of assurance has been met or exceeded by the following:

CodeMark
[CM70050](#)



Technical Statement

Product Description

LEGACY has been specifically introduced to complement our EuroLine range of roofing products, with their unmistakable eighteenth century standing seam roofing style. Unlike traditional standing seam, Legacy does not need a supporting plywood substrate.

An architectural feature of this profile are the undulations in the wide flat pan, which can be expected in this type of roof profile. In some situations indentations caused by the fixing clips or purlins may be noticeable although this will become less apparent with weathering over time.

Scope of use

LEGACY is a concealed clip fixed trough section roof and wall cladding suitable for:

- Roof cladding down to a minimum pitch of 3°
- Vertical wall cladding installed over a drained cavity

Use outside of the stated scope of use is subject to Special Design in consultation with Steel & Tube.

An architectural feature of this profile are the undulations in the wide flat pan, which can be expected in this type of roof profile. In some situations indentations caused by the fixing clips or purlins may be noticeable although this will become less apparent with weathering over time.

New Zealand Building Code (NZBC)

The product will, if employed in accordance with the supplier's installation and maintenance requirements, assist with meeting the following provisions of the building code:

- **Clause B1 Structure:** Performance B1.3.3(a), B1.3.3(b), B1.3.3(g), B1.3.3(h)
- **Clause B2 Durability:** Performance B2.3.1(b), B2.3.1(c)
- **Clause C3 Fire affecting areas beyond the fire source:** Performance C3.9
- **Clause E2 External moisture:** Performance E2.3.1, E2.3.2
- **Clause G12 Water supplies:** Performance G12.3.2

Notes

C Fire: Colorsteel® Maxx® is rated as a Group 1-S material and has an average specific extinction area of 107.0m²/kg, a peak heat release rate of 15.3 kW/m² and total heat released of 0.44 MJ/m² when tested in accordance with ISO 5660:2002 Part 1 and Part 2.

Colorsteel® Endura® is rated as a Group 1-S material and has an average specific extinction area of 132.2m²/kg, a peak heat release rate of 16.0 kW/m² and total heat released of 0.54 MJ/m² when tested in accordance with ISO 5660:2002 Part 1 and Part 2.

G12 Drinking Water: Colorsteel® Maxx® and Colorsteel® Endura® samples tested in accordance with AS/NZS 4020:2005 passed the requirements for products in contact with drinking water.

Evidence

The product meets the requirements set out in the following documents, or relevant parts of cited standards within the documents:

[COLORSTEEL Fire Testing Bulletin](#)

[COLORSTEEL Endura PTS](#)

[COLORSTEEL Maxx PTS](#)

[COLORSTEEL Dridex PTS](#)

[COLORSTEEL Dridex+ PTS](#)

masterspec partner

Company Contact Details



Company: Steel & Tube
Physical Address: 68 Stonedon Drive, East Tamaki, AUCKLAND
Postal Address: PO Box 204117, Highbrook, AUCKLAND
Telephone: 64 09 2806685
Email: info@steelandtube.co.nz; roofing@steelandtube.co.nz
Website: www.steelandtube.co.nz

Supporting Evidence

The product has and can make available the following additional evidence to support the above statements:



CodeMark
[CM70050](#)

Product Criteria

Design requirements

To comply with the performance clause of NZBC clause E2 roof cladding to be installed in accordance with (1) acceptable solution E2/AS1 (2) NZMRM Code of Practice and (4) S&T specifications. (3) S&T Details and available on 'www.steelandtube.co.nz', (4) S&T specifications.

Roof cladding to be installed in accordance with acceptable solution E2:AS1 clause 8.4.6 Structure and table 11&12 for the wind zone at the specific site location. For additional information refer to NZMRM Code of Practice section 3.16 Maximum span and fastener requirements.

An architectural feature of this profile are the undulations in the wide flat pan, which can be expected in this type of roof profile. In some situations indentations caused by the fixing clips or purlins may be noticeable although this will become less apparent with weathering over time.

Installation requirements

[Link to NZ Steel Installers Guide](#)

Maintenance requirements

[Link to NZ Steel Maintenance Guide](#)

Warrantees

[Link to NZ Steel Environmental Categories](#)

Company Product Information

Environmental

[Link to NZ Steel Environmental Product Declaration Guide](#)

Quality Assurance



ISO 9001 (Quality Management)

Relationships



Environmental Choice New Zealand



New Zealand Made



Date last validated: **27 October 2020**



Date last updated: **27 October 2020**

Disclaimer: The Product Technical Statement (PTS) template is copyright to Construction Information Limited. However the content of this PTS is the responsibility of the product manufacturer/supplier. Refer to the miproducts Terms and Conditions