

Lightweight monolithic stucco cavity wall cladding system with fibre cement sheet.

[View miproducts listing](#)



## Level of assurance needed to demonstrate NZ Building Code Compliance

Supporting documentation should include technical information by manufacturer and either a BRANZ or independent Appraisal or CodeMark



Sto confirms that this minimum level of assurance has been met or exceeded by the following:  
BRANZ Appraisal  
[488 \(2006\)](#)

## Technical Statement

### Product Description

The StoLite Stucco Cladding System is a proprietary lightweight stucco render system for use over minimum 6 mm thick fibre cement sheet [James Hardie HardieFlex or PACBLD Base (Eterpan)]. The system incorporates a drained cavity and is designed for timber framed construction.

The StoLite render system consists of a 12 mm thick stucco render incorporating LevelLite basecoat render, nominal 3 mm thick StoArmat Classic meshed reinforcement render, selected Stolit K or Stolit MP coloured finishing render and selected StoColor facade paint or clear sealer.

Stolit K finishing renders are available in a flat 1.0, 1.5, 2.0 or 3.0 mm aggregate. Stolit MP and MP Natural are fine pre-coloured sponge finishes.

The StoColor System comprises of 800 colours for use in architecture — or can be matched to any colour using the Sto Spectrometer to meet any colour design preference.

Stoanz Limited recommends that the selected finish colour must have a minimum Light Reflectance Value (LRV) of 35%. Where a colour with an LRV of less than 35% but above 25% is selected, two (2) coats of StoColor X-black heat reflective facade paint is required.

Using modern technology with enhanced and well-engineered materials, this lightweight stucco cavity system provides a strong, durable and flexible solution for a high performance facade.

### Scope of use

StoLite has been appraised by BRANZ as an external wall cladding system for buildings within the following scope:

- the scope limitations of NZBC Acceptable Solution E2/AS1, Paragraph 1.1; and,
- constructed with timber framing complying with the NZBC; and,
- with a risk score of 0-20, calculated in accordance with NZBC Acceptable Solution E2/AS1, Table 2; and,
- situated in NZS 3604 Wind Zones up to, and including Extra High.

StoLite has also been appraised for weathertightness and structural wind loading when used as an exterior wall cladding for buildings within the following scope:

- the scope limitations of NZBC Acceptable Solution E2/AS1, Paragraph 1.1 with regards to building height and floor plan area; and,
- constructed with timber framing subject to specific engineering design; and,
- situated in specific design wind pressures up to a maximum design differential ultimate limit state (ULS) of 2.5 kPa.

StoLite must only be installed on vertical surfaces (except for tops of parapets, sills and balustrades).

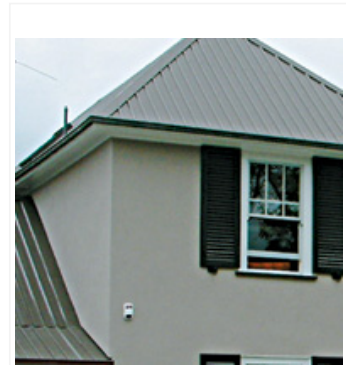
The system is appraised for use with aluminium window and door joinery that is installed with vertical jambs and horizontal heads and sills.

### New Zealand Building Code (NZBC)

The product will, if employed in accordance with the supplier's installation and maintenance requirements, assist with meeting the following provisions of the building code:

- Clause B1 Structure:** Performance B1.3.1, B1.3.2, B1.3.3, B1.3.3(a), B1.3.3(h), B1.3.3(j), B1.3.3(q), B1.3.4
- Clause B2 Durability:** Performance B2.3.1(b), B2.3.1(c), B2.3.2
- Clause C3 Fire affecting areas beyond the fire source:** Performance C3.7
- Clause E2 External moisture:** Performance E2.3.2
- Clause F2 Hazardous building materials:** Performance F2.3.1

### Notes



**masterspec partner**

#### Company Contact Details



Company: Sto New Zealand  
Physical Address: 72 Abel Smith Street  
Te Aro  
Wellington  
Postal Address: 72 Abel Smith Street  
Te Aro  
Wellington  
Telephone: 64 04 8017794  
Fax: 64 04 3849828  
Email: [info@sto.co.nz](mailto:info@sto.co.nz)  
Website: [www.sto.co.nz](http://www.sto.co.nz)

The StoLite Stucco Cladding System meets the requirements of Performance B2.3.1(b) 15 years for the render and cavity system, and the requirements of Performance B2.3.1(c) 5 years for the paint finish.

The StoLite Stucco Cladding System will not present a health hazard to people.

## Supporting Evidence

The product has and can make available the following additional evidence to support the above statements:



BRANZ Appraisal  
[488 \(2006\)](#)

## Product Criteria

### Design requirements

StoLite is expected to have a serviceable life of at least 30 years provided the system is maintained in accordance with the Sto Specification, Warranty and BRANZ Appraisal, and the fibre cement sheets, fixings and renders are continuously protected by a weathertight coating and remain dry in service.

Studs must be at maximum 600 mm centres for buildings situated in NZS 3604 Wind Zones Low, Medium, High and Very High, and at maximum 400 mm centres for buildings situated in NZS 3604 Wind Zone Extra High and specifically designed buildings.

The StoLite render and finishing system has a peak heat release rate of less than 100 kW/m<sup>2</sup> and a total heat released of less than 25 MJ/m<sup>2</sup>. The system is suitable for use on buildings with a SH Risk Group classification, at any distance to the relevant boundary. Refer to NZBC Acceptable Solutions C/AS2 – C/AS6, Paragraph 5.8.1 for the specific exterior surface finish requirements for other building Risk Groups.

For a breakdown of the system components, [Click Here](#).

### Installation requirements

Installation and finishing of components and accessories supplied by Stoanz Limited and the Sto registered contractor must be completed by trained applicators, approved by Stoanz Limited.

Installation of the accessories supplied by the building contractor must be carried out in accordance with the StoLite Technical Literature and the BRANZ Appraisal by, or under the supervision of a Licensed Building Practitioner (LBP) with the relevant Licence Class.

### Maintenance requirements

Regular maintenance is essential to ensure the performance requirements of the NZBC are continually met and to ensure the maximum serviceability of the system. Carry out an annual inspection and record this on the Sto Construction Systems Maintenance schedule.

Regular cleaning (at least annually) of the paint coating is required to remove grime, dirt and organic growth and to maximise the life and appearance of the coating. Grime may be removed by brushing with a soft brush, warm water and detergent. The paint system must be recoated at approximately 8-10 yearly intervals in accordance with Stoanz Limited instructions. Clear sealer systems require recoating at 5-7 yearly intervals.

### Warrantees

With an increasing emphasis on the implementation of servicing exterior building elements, Sto has launched the StoArmat 20 Year Warranty and StoService Assurance documentation. This system, administered by Sto and carried out by Sto Contractors, ensures all specified StoArmat Rendered Systems are registered, serviced and certified every two and a half years to provide assurance that all building elements pertaining to the rendered facade are performing.

Refer to the StoArmat Warranty Document by [clicking here](#).

## Company Product Information

### Environmental

Protecting the natural basis for life and improving quality of life are important aims in social policy. Sto actively pursues these aims, always acting in accordance with the company's guiding principle: "Building with conscience."

In order to define and implement its ecological targets, Sto has developed a system of environmental management conforming to international standards. This relates to the entire process chain – from the procurement of the raw product, to production, packaging and logistics.

### Quality Assurance



ISO 9001 (Quality Management)



Date last validated: **07 July 2020**



Date last updated: **07 July 2020**

# Sto Lite Stucco Cladding System

Product Technical Statement: 104729



Disclaimer: The Product Technical Statement (PTS) template is copyright to Construction Information Limited. However the content of this PTS is the responsibility of the product manufacturer/supplier. Refer to the miproducts Terms and Conditions